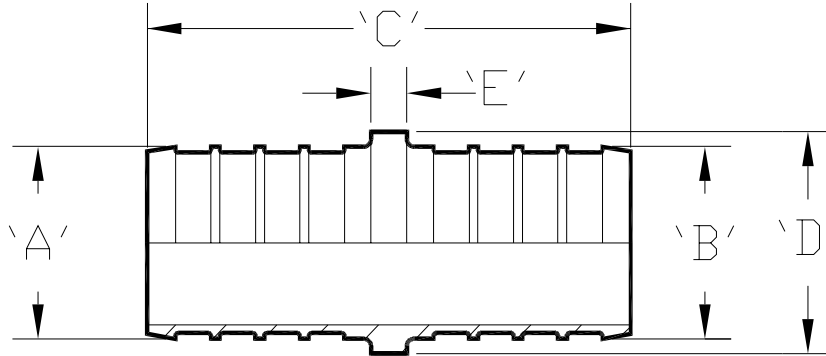




DZR Brass Coupling QQC__DZX Specification Sheet

Tag _____

Dimensional Data: Inches and [mm] are subject to manufacturing tolerances and change without notice.



Part Number	Description	'A'	'B'	'C'	'D'	'E'
QQC64DZX	1-1/4" Barb x 3/4" Barb Coupling	1.045" [26.5]	0.667" [16.9]	2.03" [51.6]	1.12" [28.4]	0.25" [6.4]
QQC65DZX	1-1/4" Barb x 1" Barb Coupling	1.045" [26.5]	0.856" [21.7]	2.20" [51.6]	1.12" [28.4]	0.25" [6.4]
QQC66DZX	1-1/4" Barb x 1-1/4" Barb Coupling	1.045" [26.5]	1.045" [26.5]	2.55" [64.8]	1.12" [28.4]	0.25" [6.4]
QQC74DZX	1-1/2" Barb x 3/4" Barb Coupling	1.233" [31.3]	0.667" [16.9]	2.03" [51.6]	1.30" [33.0]	0.25" [6.4]
QQC75DZX	1-1/2" Barb x 1" Barb Coupling	1.233" [31.3]	0.856" [21.7]	2.20" [51.6]	1.30" [33.0]	0.25" [6.4]
QQC76DZX	1-1/2" Barb x 1-1/4" Barb Coupling	1.233" [31.3]	1.045" [26.5]	2.55" [64.8]	1.30" [33.0]	0.25" [6.4]
QQC77DZX	1-1/2" Barb x 1-1/2" Barb Coupling	1.233" [31.3]	1.233" [31.3]	2.55" [64.8]	1.30" [33.0]	0.25" [6.4]

Engineering Specification: ZurnPEX[®] DZR brass barb coupling. The QQC__DZX is used to connect two separate pieces of PEX tubing. Large diameter fittings are made with dezincification resistant brass. These fittings, as a system with Zurn PEX[®] tubing, are pressure rated at 160 PSI at 73°F, 100 PSI at 180°F, and 80 PSI at 200°F. These fittings are listed by NSF as complying with the following standards: NSF/ANSI Standard 14, NSF/ANSI Standard 61, ASTM F877, and CSA B137.5.

Accessories

- ___ **QCLP4X** 3/4" QuickClamp™ Crimp Ring
- ___ **QCLP5X** 1" QuickClamp™ Crimp Ring
- ___ **QCR4X** 3/4" Copper Crimp Ring
- ___ **QCR5X** 1" Copper Crimp Ring
- ___ **QCR6X** 1-1/4" Copper Crimp Ring
- ___ **QCR7X** 1-1/2" Copper Crimp Ring

Rev.	Date: 06/20/08	C.N. No.98653
Dwg. No. 83805	Prod. No. QQC__DZX	