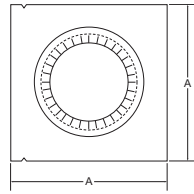
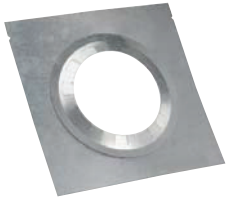


TOPS, SUPPORTS AND FIRESTOPS

QUICK GRIP FIRESTOP/SPACER - Used to protect combustible materials where the pipe passes through a ceiling or wall

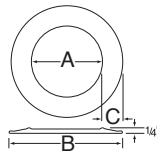


Size	Product No.	Part No.	a
3"	103406	3RV-FSP	9"
4"	104406	4RV-FSP	10"
5"	105406	5RV-FSP	11"
6"	106406	6RV-FSP	12"

Size	Product No.	Part No.	a	UL Model
3"	103404	3RV-FSPU	9"	
4"	104404	4RV-FSPU	10"	
5"	105404	5RV-FSPU	11"	
6"	106404	6RV-FSPU	12"	

NOTE: UL-listed model includes an attached spacer ring to ensure 1" clearance to combustibles.

PIPE COLLAR - Provides a decorative/finished appearance
- Pipe collar also acts as a firestop

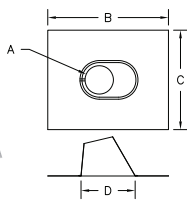
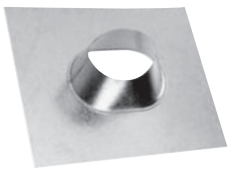


Size	Product No.	Part No.	a	b	c
3"	103460	3RV-GC	3 ³ / ₄ "	8 ¹ / ₂ "	2 ³ / ₈ "
4"	104460	4RV-GC	4 ³ / ₄ "	9 ¹ / ₂ "	2 ³ / ₈ "
5"	105460	5RV-GC	5 ³ / ₄ "	10 ¹ / ₂ "	2 ³ / ₈ "
6"	106460	6RV-GC	6 ³ / ₄ "	11 ¹ / ₂ "	2 ³ / ₈ "
7"	107460	7RV-GC	7 ³ / ₄ "	12 ¹ / ₂ "	2 ³ / ₈ "

NOTE: May be used as firestop for openings in floors, ceilings and walls.

FLASHINGS AND STORM COLLAR

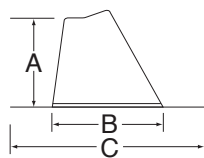
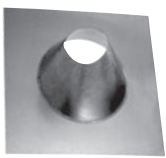
ADJUSTABLE ROOF FLASHING - Used where the vent passes through a roof



Size	Product No.	Part No.	Flat to 6/12			
			a	b	c	d
3"	103825	3RV-AF	3 ¹ / ₂ "	14 ⁷ / ₈ "	12 ¹ / ₄ "	6 ¹ / ₁₆ "
4"	104825	4RV-AF	4 ¹ / ₂ "	16"	13 ³ / ₄ "	7 ³ / ₄ "
5"	105825	5RV-AF	5 ¹ / ₂ "	16 ¹⁵ / ₁₆ "	14 ¹ / ₄ "	8 ⁷ / ₈ "
6"	106825	6RV-AF	6 ¹ / ₂ "	18"	15 ¹ / ₄ "	10"
7"	107825	7RV-AF	7 ¹ / ₂ "	19 ⁷ / ₈ "	16"	11 ¹ / ₈ "
8"	108825	8RV-AF	8 ¹ / ₂ "	20 ¹ / ₄ "	16 ¹⁵ / ₁₆ "	12 ¹ / ₄ "

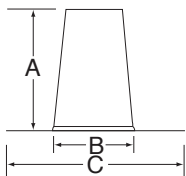
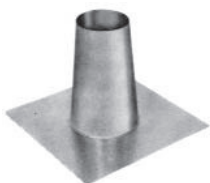
Size	Product No.	Part No.	6/12 to 12/12			
			a	b	c	d
3"	103830	3RV-AF12	3 ¹ / ₂ "	18"	15 ¹ / ₄ "	10 ¹ / ₄ "
4"	104830	4RV-AF12	4 ¹ / ₂ "	19 ⁷ / ₈ "	16"	11 ¹ / ₈ "
5"	105830	5RV-AF12	5 ¹ / ₂ "	20 ¹ / ₄ "	16 ¹⁵ / ₁₆ "	12 ¹ / ₄ "
6"	106830	6RV-AF12	6 ¹ / ₂ "	24 ¹ / ₄ "	20"	15 ⁵ / ₈ "
7"	107830	7RV-AF12	7 ¹ / ₂ "	24 ¹ / ₄ "	20"	15 ⁵ / ₈ "
8"	108830	8RV-AF12	8 ¹ / ₂ "	25"	19 ¹ / ₂ "	17 ⁵ / ₈ "

TALL CONE ADJUSTABLE ROOF FLASHING - Used where the vent passes through a roof
- Adjustable to 6/12 pitch



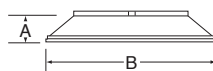
Size	Product No.	Part No.	a	b	c
3"	103820	3RV-TFA	8 ³ / ₄ "	11"	19 ¹ / ₂ "
4"	104820	4RV-TFA	8 ³ / ₄ "	11"	19 ¹ / ₂ "
5"	105820	5RV-TFA	8 ³ / ₄ "	11"	19 ¹ / ₂ "
6"	106820	6RV-TFA	8 ³ / ₄ "	11"	19 ¹ / ₂ "
7"	107820	7RV-TFA	8 ³ / ₄ "	14"	22"
8"	108820	8RV-TFA	8 ³ / ₄ "	15 ³ / ₁₆ "	23"

TALL CONE FLAT ROOF FLASHING - Used on flat roof surfaces



Size	Product No.	Part No.	a	b	c
3"	103815	3RV-TF	12"	7 ¹ / ₂ "	16 ¹ / ₂ "
4"	104815	4RV-TF	12"	7 ¹ / ₂ "	16 ¹ / ₂ "
5"	105815	5RV-TF	12"	7 ¹ / ₂ "	16 ¹ / ₂ "
6"	106815	6RV-TF	12"	11"	19 ¹ / ₂ "
7"	107815	7RV-TF	12"	11"	19 ¹ / ₂ "
8"	108815	8RV-TF	12"	11"	19 ¹ / ₂ "

STORM COLLAR - Used to provide a weather proof seal to pipe above roof line
- Used above the Flashing
- Seal inner edge with hi-temp silicone sealant



Size	Product No.	Part No.	a	b
3"	103810	3RV-SC	1 ¹ / ₁₆ "	6 ⁵ / ₈ "
4"	104810	4RV-SC	1 ¹ / ₁₆ "	7 ⁵ / ₈ "
5"	105810	5RV-SC	1 ¹ / ₁₆ "	8 ⁵ / ₈ "
6"	106810	6RV-SC	1 ¹ / ₁₆ "	9 ⁵ / ₈ "
7"	107810	7RV-SC	1 ¹ / ₁₆ "	10 ³ / ₄ "
8"	108810	8RV-SC	1 ¹ / ₁₆ "	11 ³ / ₄ "

NOTE: See instructions for use/limitations