

P4B-200C

P4B-200SS

P4B-240C

P4B-240SS

PLUMB4ORCE

8" Two Handle Kitchen Faucet



FEATURES & BENEFITS

- This Product Contains Less Than 0.25% Weighted Average Lead Content On Wetted Surfaces
- Metal Lever Handles
- Ceramic Cartridges
- With Side Spray
- Max Flow Rate 1.5 GPM (5.7 L/MIN) At 60 PSI (ASME A112.18.1M/A112.18.1)

APPROVALS:

Meets or Exceeds The Following:

- * ANSI/ASME A112.18.1M/A112.18.1
- * NSF/ANSI 61 - Sec. 9
- * NSF/ANSI 372
- * IAPMO/cUPC
- * CA AB1953

P4B-240C
Chrome Finish

P4B-240SS
Stainless Steel Finish

P4B-200C
Less Side Spray
Chrome Finish

P4B-200SS
Less Side Spray
Stainless Steel Finish



NSF/ANSI 372
NSF/ANSI 61-9



TEL: 855-806-0688

FAX: 845-350-4043

Visit Our Web Site : www.plumb4orce.com

Product Spec Sheet

P4B-200C

P4B-200SS

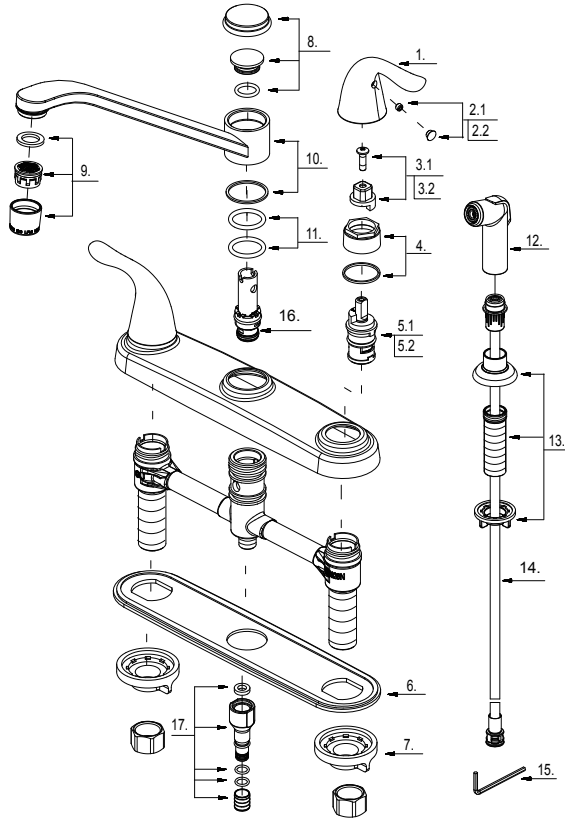
P4B-240C

P4B-240SS

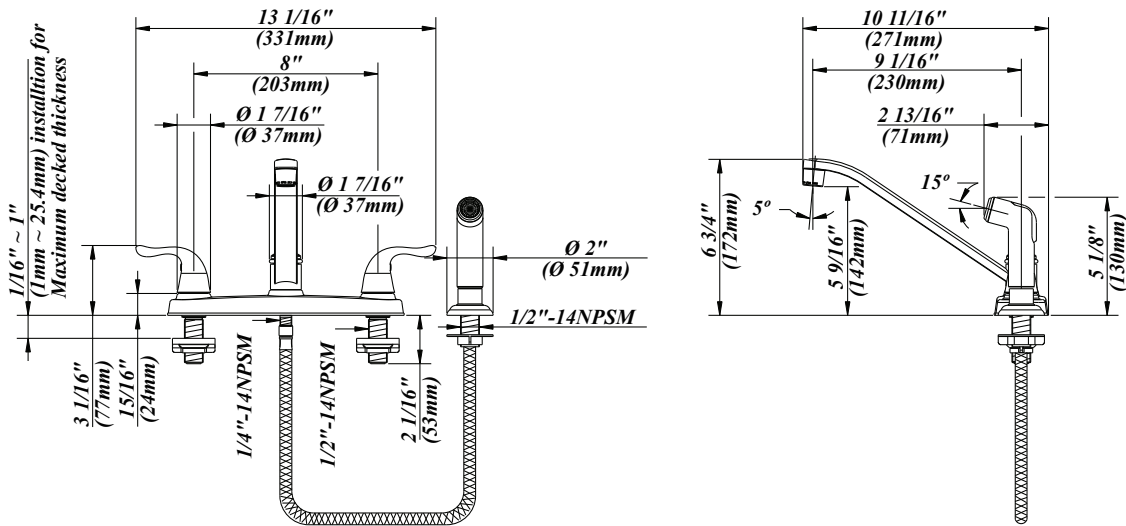


8" Two Handle Kitchen Faucet

No.	Name	Part No.
1	Metal Handle	A069115
2.1	Index Button-Cold	A603595C
2.2	Index Button-Hot	A603595H
3.1	Handle Adaptor-Cold	A66D574C
3.2	Handle Adaptor-Hot	A66D574H
4	Retainer Nut & Washer	A663631
5.1	Ceramic Disc Cartridge -Cold	A507104N
5.2	Ceramic Disc Cartridge -Hot	A507103N
6	Putty Plate	A011125
7	Lock Nut Set	A504023
8	Spout Trim Cap	A663163N
9	Aerator	A500871N-51
10	Spout Set	A666321N
11	O-Ring Set ($\Phi 7/8"$ ID * $\Phi 1-1/8"$ OD)	A668000N
12	Side Spray	A503002N
13	Spray Holder Assembly (3-15/16" L)	A220008
14	Spray Hose	A512139N
15	Hex Wrench (H2.5 * 19 mm L * 53 mm L)	A031000NI
16	Spray Diverter w/Vacuum Breaker	A66G174N
17	Sealing Kit	A66G352N



Product Spec Sheet



TEL: 855-806-0688 FAX: 845-350-4043

Visit Our Web Site : www.plumb4orce.com