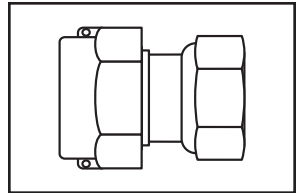
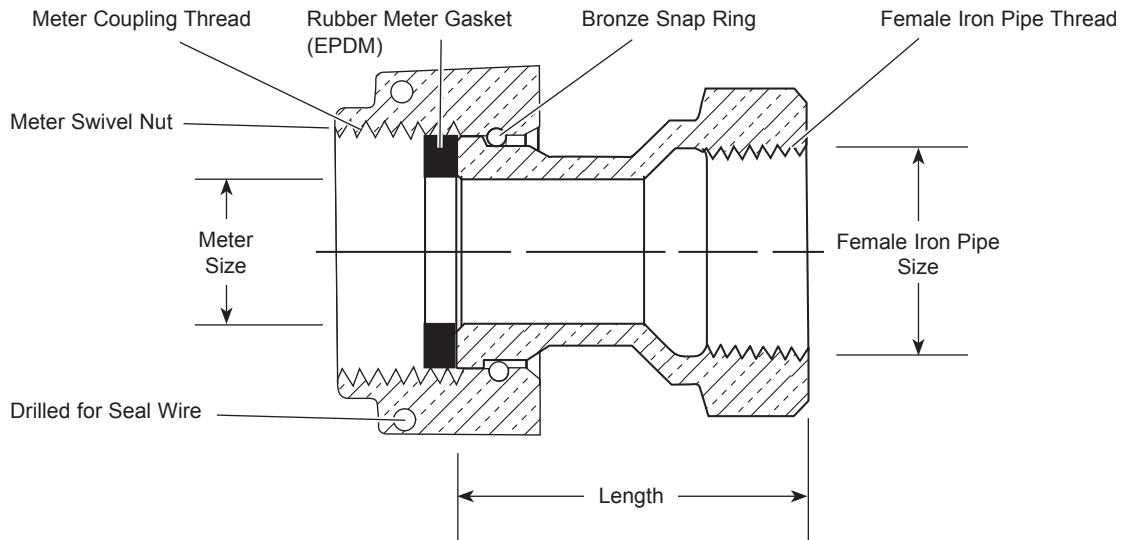


SUBMITTAL INFORMATION

Straight Meter Coupling - (C31-xx-NL style)



METER SWIVEL NUT BY FEMALE IRON PIPE THREAD



METER SIZE	FIP SIZE	LENGTH	APPROX. WT. LBS	PART NUMBER	✓ SUBMITTED ITEM(S)
5/8"	3/4"	1-15/16"	.6	▼ C31-13-NL	
5/8"x3/4" AND 3/4"	3/4"	1-25/32"	.7	▼ C31-23-NL	
5/8"x3/4" AND 3/4"	1"	1-15/16"	.8	▼ C31-24-NL	
1"	1"	2-5/16"	1.1	▼ C31-44-NL	
1"	1-1/4"	2-5/16"	1.1	C31-45-NL	

▼ Approved to ANSI/NSF Standard 61-2007a.

FEATURES

- All brass that comes in contact with potable water conforms to AWWA Standard C800 (UNS C89833)
- The product has the letters "NL" cast into the body for proper identification
- Brass components that do not come in contact with potable water conform to AWWA Standard C800 (ASTM B-62 and ASTM B584, UNS C893600-85-5-5-5)
- Body design provides wrench flats to facilitate installation
- Conforms to AWWA C700 for Meter Threads

The Ford Meter Box Company considers the information in this submittal form to be correct at the time of publication. Item and option availability, including specifications, are subject to change without notice. Please verify that your product information is current.



The Ford Meter Box Company, Inc.
 P.O. Box 443, Wabash, Indiana U.S.A. 46992-0443
 Phone: 260-563-3171 / Fax: 800-826-3487
 Overseas Fax: 260-563-0167
<http://www.fordmeterbox.com>

02/28/13

Submitted By: