

REQUIREMENT:

- Class 30B
- Class 35B
- Ductile Iron



Quality – Service – Commitment – Delivered.

MUNICIPAL VALVE AND SERVICE BOXES

SIZE RANGE:

- Adjustable Slip and Screw Type with standard assembled lengths ranging from 15” to 72” (Lengths do not include risers and/or extensions).

STANDARDS:

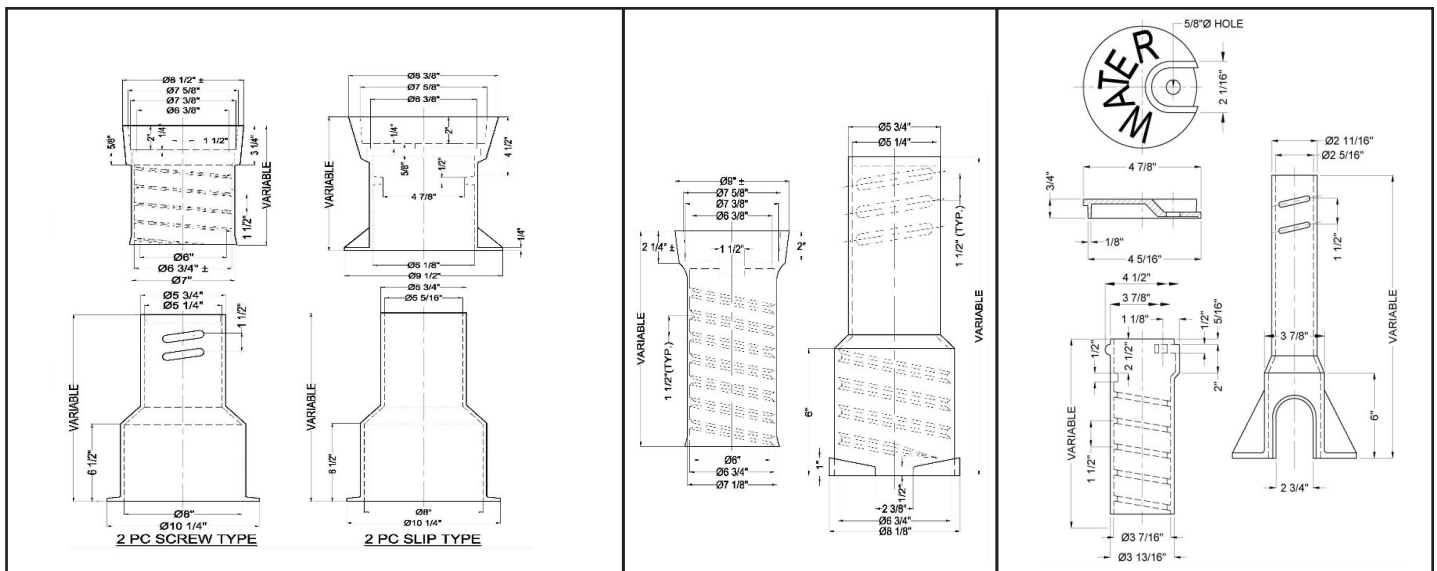
- Manufactured from cast iron in accordance with and meet all applicable terms and provisions as per ASTM A48 standard and will meet the minimum tensile strength requirements.
- Sigma Valve Boxes when properly installed can be used for projects related to American Association of State and Highway Officials (AASHTO) standards.

INSTALLATION:

- Per AWWA M44

COATING:

- Black Asphaltic Bituminous paint. Coating thickness of 1 to 2mil is applied on the product.



Extention Height	Components	2 Pc Screw Type	2 Pc Slip Type	Extention Height	Components	3 Pc Screw Type	Extention Height	Components	Screw Type Service Box
19-22	10T + 15B	VB261	VB461	27-37	10T + 12B	VB630AA	24-33	15T + 21B	VB791C
27-37	16T + 24B	VB262	VB462	33-42	10T + 18B	VB630A	30-39	15T + 27B	VB792C
39-50	16T + 36B	VB264	VB464	39-49	16T + 24B	VB630B	30-42	18T + 27B	VB792D
39-60	26T + 36B	VB266	VB466B / VB466N*	45-54	16T + 30B	VB630C	36-48	18T + 33B	VB793D
50-71	26T + 48B	VB267	VB467	51-60	16T + 36B	VB630CC	36-54	24T + 33B	VB793E
63-81	26T + 60B	VB268	VB468	45-66	26T + 30B	VB630D	42-60	24T + 39B	VB794E
				51-72	26T + 36B	VB630DD	41-64	30T + 39B	VB795E
				63-84	26T + 48B	VB630F			
				74-94	26T + 60B	VB630G			
			B = With Flange N = Without Flange	NOTE: Requires use of base - Above ships with VB6306 base standard - Other sizes available					

**** ADD -35 TO ITEM # FOR CLASS 35B GREY IRON REQUIREMENTS / ADD -D FOR DUCTILE IRON REQUIREMENTS
RISERS, EXTENSIONS AND VARIOUS SPECIALLY LETTERED LIDS AVAILABLE FOR ALL ITEMS**

700 Goldman Drive
Cream Ridge, NJ 08514
CRMCSR@sigmaco.com

5000 Askins Lane
Houston, TX 77093
HTNCSR@sigmaco.com

4652 E. Guasti Rd
Ontario, CA 91761
ONTCSR@sigmaco.com

21699 Torrence Avenue
Sauk Village, IL 60411
CHICSR@sigmaco.com

Highway 22 West
Alexander City, AL 35010
ALXCSR@sigmaco.com