



# BRONZE SINGLE/DOUBLE STRAP SERVICE SADDLES



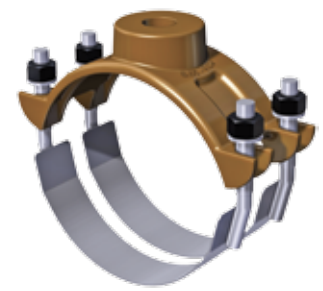
**STYLE 101B**  
BRONZE SADDLE  
WITH BRONZE STRAP



**STYLE 101BS**  
BRONZE SADDLE  
WITH STAINLESS STRAP



**STYLE 202B**  
BRONZE SADDLE  
WITH BRONZE STRAPS



**STYLE 202BS**  
BRONZE SADDLE  
WITH STAINLESS STRAPS

NOM. PIPE SIZE	BRONZE SINGLE STRAP SERVICE SADDLES				BRONZE DOUBLE STRAP SERVICE SADDLES				
	O.D. SIZE RANGE	1/2" I.P., 3/4" & 1" I.P. or C.C.		APPROX. WEIGHT EA. (lbs.)	1/2" I.P., 3/4" & 1" I.P. or C.C.		1 1/4", 1 1/2", 2" I.P. or C.C.		APPROX. WEIGHT EA. (lbs.)
		101B	101BS		202B	202BS	202B	202BS	
4"	4.50 - 4.80	N/A			\$198.05	\$174.51	\$245.23	\$203.57	8.0 #
	4.50 - 5.40	\$118.30	\$96.25	4.0 #	N/A				
	4.80 - 5.40	N/A			198.05	174.51	245.23	203.57	8.0 #
6"	6.00 - 6.63	140.97	117.06	4.75 #	N/A				
	6.63 - 7.50 <sup>1</sup>	140.97	117.06	4.75 #	246.11	205.60	250.29	235.03	9.0 #
8"	8.00 - 8.63	147.98	149.22	5.0 #	N/A				
	8.63 - 9.62 <sup>1</sup>	147.98	149.22	5.0 #	281.72	254.44	285.90	267.88	11.5 #
10"	10.00 - 10.75	193.57	195.20	7.5 #	329.84	315.25	334.05	346.29	11.0 #
	11.10 - 12.12	193.57	195.20	7.5 #	329.84	315.25	334.05	346.29	11.0 #
12"	12.00 - 12.75	206.15	207.86	9.0 #	347.41	350.50	369.81	395.39	12.0 #
	13.20 - 14.38	206.15	207.86	9.0 #	347.41	350.50	369.81	395.39	12.0 #
14"	14.40 - 16.00	N/A			382.15	389.33	408.08	441.67	13.0 #
16"	16.00 - 17.40	N/A			438.66	464.57	477.23	521.15	15.0 #
	17.32 - 17.45	N/A			438.66	464.57	477.23	521.15	15.0 #

<sup>1</sup> For PVC pipe, choose the saddle that has the OD closest to the top of the saddle's OD range.

Saddles for ductile iron size PVC (C-900), and iron pipe size PVC should be preformed at factory.

When ordering for PVC pipe, specify O.D. (D.I. or IPS).

TO ORDER: Add tap size to the upper range of the saddle.

**EXAMPLE:**

	STYLE	UPPER RANGE	TAP SIZE	TYPE THREAD
Bronze Saddle w/ Bronze strap ("B"):	<b>202B</b>	<b>7.50</b>	<b>x</b>	<b>3/4" IP</b>
Bronze Saddle w/ Stainless Steel strap ("BS"):	<b>202BS</b>	<b>7.50</b>	<b>x</b>	<b>3/4" IP</b>