



RCBA- MULTIFLEX® INDOOR COILS

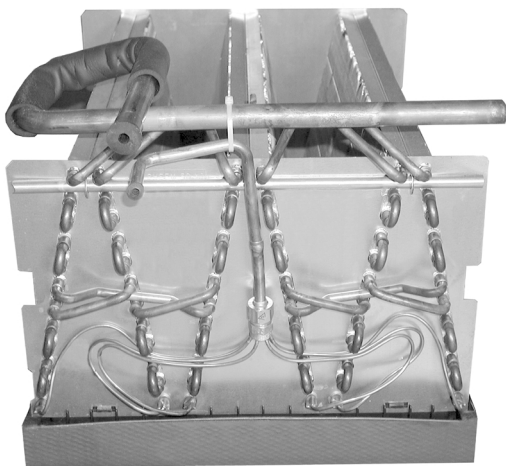
AIRFLOW CAPACITIES 600-2000 CFM [218-944 L/s]

Ruud Value Series Indoor Coils are designed for use with Ruud Value Series outdoor units in upflow, downflow and horizontal configurations.

The MultiFlex® coils provide nominal capacities ranging from 18,000 to 60,000 BTUH [5.27 to 17.58 kW].

The patented single-row, single-coil pleated concept results in extremely low pressure drops and corresponding easy cleaning.

Drain connections may be made from either side of the coil.



Engineering Features

- Constructed of enhanced aluminum fins bonded to inner grooved copper tubing.
- Coils have sweat fitting refrigerant connections.
- Primary condensate drain connections are 3/4" [19 mm] F.N.P.T.
- Coils are A.R.I. certified for system application with a wide variety of Ruud Value Series outdoor units.
- Condensate drain pan is constructed of a high grade, heat resistant, corrosion free polymer material.



MODEL NUMBER IDENTIFICATION

<u>R</u>	<u>C</u>	<u>B</u>	<u>A</u>	-	<u>37</u>	<u>65</u>	<u>G</u>	<u>H</u>
Ruud Value Series	Coil	Type of Coil	Design Series		Nominal Capacity	Metering Device	Airflow/Refrigerant Connections	Horizontal Drain Pan
		B = Flowcheck Standard Cooling/ Heat Pump	A = 1st Design		24 = 18,000 to 24,000 BTUH [5.27 to 7.03 kW] 37 = 30,000 to 36,000 BTUH [8.79 to 10.55 kW] 48 = 42,000 to 48,000 BTUH [12.31 to 14.06 kW] 60 = 60,000 BTUH [17.58 kW]	** = Flowcheck Piston (RCBA Coils)		

REFRIGERANT METERING—RCBA Coils
PISTON SIZES (PART NUMBER 61-23414-**)

MODEL/SIZE TON [kW]	10PJA- HEAT PUMP	10AJA- CONDENSING UNITS
	PRELIMINARY 10 SEER RECIP. MODELS	10 SEER RECIP. MODELS
18/1.5 [5.28]	53	51
24/2.0 [7.03]	61	61
30/2.5 [8.79]	70	65
36/3.0 [10.55]	68	73
42/3.5 [12.31]	78	78
48/4.0 [14.07]	N/A	78
60/5.0 [17.58]	N/A	89

[] Designates Metric Conversions

RXCT- EXPANSION VALVE CONVERSION KIT FOR RCBA INDOOR COILS

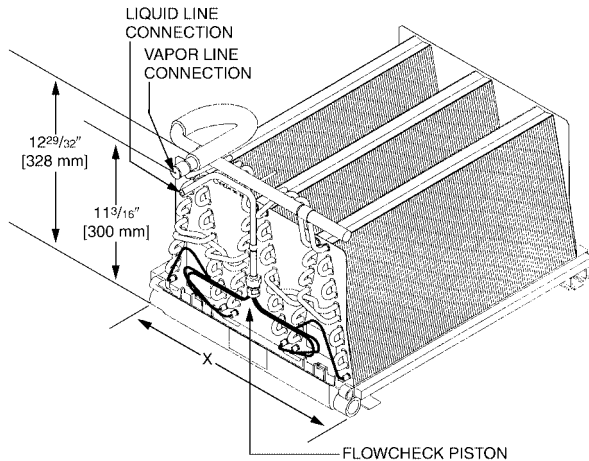
Use an expansion valve kit to convert RCBA- indoor coils to High Efficiency Coils

EXPANSION VALVE KIT	WITH RCBA- COIL	APPLICATION MODELS	PISTON SIZE
RCBA- APPLICATIONS—12 SEER COOLING ONLY MODELS			
RXCT-BCA	RCBA-24	1½ Ton [5.28 kW]	.099
RXCT-BCB	RCBA-24	2 Ton [7.03 kW]	.120
RXCT-BCC	RCBA-37	2½ Ton [8.79 kW]	.140
RXCT-BCD	RCBA-36/37	3 Ton [10.55 kW]	.157
RXCT-BCE	RCBA-48	3½ Ton [12.31 kW] & 4 Ton [14.07 kW]	.157

[] Designates Metric Conversions

UNIT DIMENSIONS & WEIGHTS— RCBA- UNCASD COILS

MODEL NUMBER	UNCASD COIL "X" IN. [mm]	CONNECTION SIZE (IN.) [mm]		UNIT WEIGHT (LBS.) [Kg]	
		SWEAT		UNCASD COIL	
		LIQUID I.D.	SUCTION I.D.	WT.	SHIP WT.
RCBA-24	12 ¹ / ₄ [311]	3/8 [10]	3/4 [19]	15 [6.80]	17 [7.11]
RCBA-37	15 ³ / ₄ [400]			20 [9.07]	22 [9.98]
RCBA-48	19 ¹ / ₄ [489]		7/8 [22]	26 [11.79]	29 [13.15]
RCBA-60	22 ³ / ₄ [578]			32 [14.51]	35 [15.88]

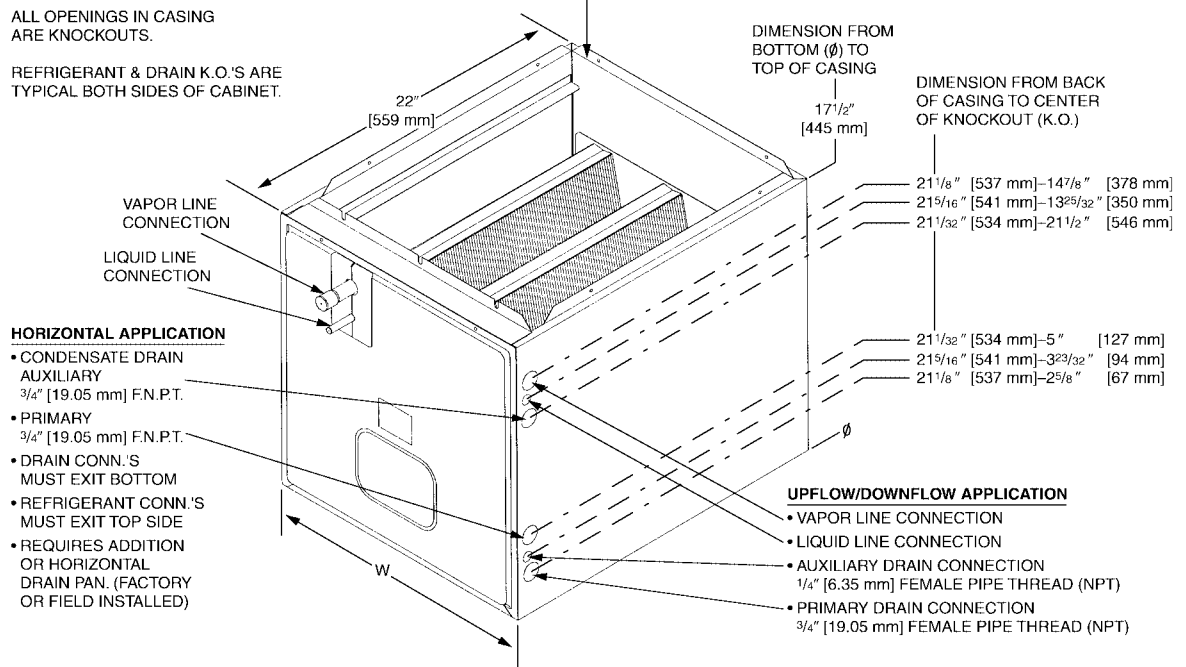


UNIT MAY BE INSTALLED UPFLOW, DOWNFLOW, HORIZONTAL RIGHT OR LEFT HAND AIR SUPPLY.

ALL OPENINGS IN CASING ARE KNOCKOUTS.

REFRIGERANT & DRAIN K.O.'S ARE TYPICAL BOTH SIDES OF CABINET.

DUCT FLANGES MUST BE FORMED @ PERFORATION. (TOP AND BOTTOM)



TXBC CABINET WIDTH SUPPLY & RETURN AIR DIMENSIONS WITH TXBC COIL CASING

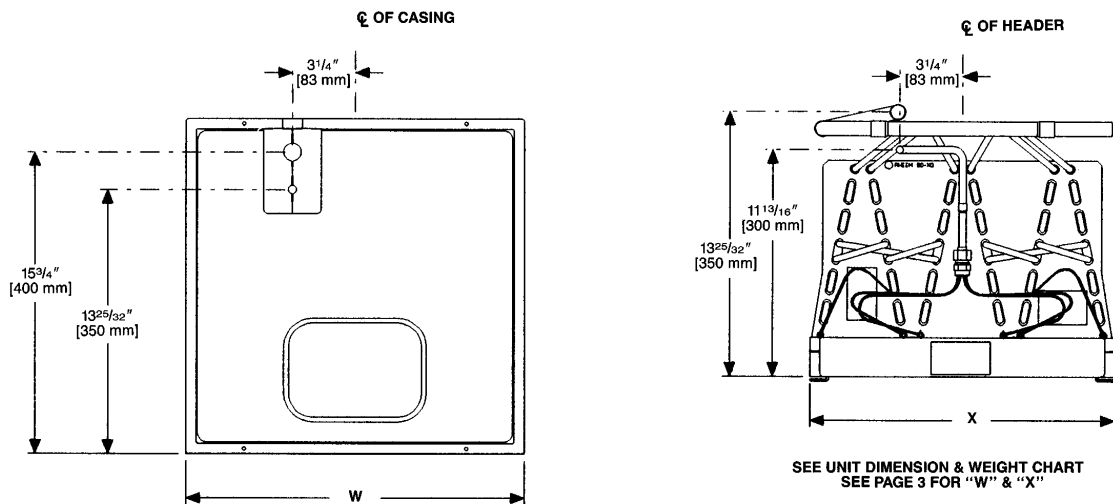
UPFLOW/HORIZONTAL

TXBC CABINET WIDTH		14" [356]	17.5" [445]	21" [533]	24.5" [622]
SUPPLY AIR	"W" IN. [mm]	13" [330]	16 1/2" [419]	20" [508]	23 1/2" [597]
	"D" IN. [mm]	19 5/8" [498]	19 5/8" [498]	19 5/8" [498]	19 5/8" [498]
RETURN AIR	"W" IN. [mm]	13" [330]	16 1/2" [419]	20" [508]	23 1/2" [597]
	"D" IN. [mm]	19 7/8" [505]	19 7/8" [505]	19 7/8" [505]	19 7/8" [505]

DOWNFLOW

TXBC CABINET WIDTH		14" [356]	17.5" [445]	21" [533]	24.5" [622]
SUPPLY AIR	"W" IN. [mm]	13" [330]	16 1/2" [419]	20" [508]	23 1/2" [597]
	"D" IN. [mm]	19 7/8" [505]	19 7/8" [505]	19 7/8" [505]	19 7/8" [505]
RETURN AIR	"W" IN. [mm]	13" [330]	16 1/2" [419]	20" [508]	23 1/2" [597]
	"D" IN. [mm]	19 5/8" [498]	19 5/8" [498]	19 5/8" [498]	19 5/8" [498]

"G(-)" FRONT CONNECTION FOR RCBA-



I235

Front Connection
Designated as (G) in model number.

NOTE: Models 14 and 17 have front connections only unless option 31 is available, which allows side connections. Side connection can also be field-installed to models 21 and 24.

PHYSICAL DATA

COIL MODEL NUMBER	APPROX. DESIGN AIRFLOW RANGE (CFM) [L/s]	FACE AREA (SQ. FT.) [m ²]	FINS/IN.	NUMBER OF SLABS
RCBA-24**	600-800 [283.1-377.6]	5.07 [.471]	18	4
RCBA-37**	1000-1200 [471.1-566.3]	7.60 [.706]		6
RCBA-48**	1400-1600 [660.7-755.1]	10.13 [.941]		8
RCBA-60**	2000 [943.9]	12.67 [1.18]		10

NOTES: **—Indicates piston size on RCBA coils.

[] Designates Metric Conversions

UNCASED COIL APPLICATION—REPLACEMENT OR AIR HANDLER UNITS WITHOUT COILS

COIL MODEL NUMBER	NO. COIL SLABS	AIR HANDLER			
		14AH	17AH	21AH	24AH
RC(B)A-24	4	X			
RC(B)A-37	6		X		
RC(B)A-48	8			X	
RC(B)A-60	10				X

NOTES: Requires coil code "00" (without coil—with plenum) in unit model number.
All require horizontal drain pan accessory (RXBD-DA) for horizontal applications.
Cabinet widths 14 = 14" [355.6], 17 = 17.5" [444.5], 21 = 21" [533.4], 24 & 25 = 24.5" [622.3].

RCBA COIL WITH TXBC CASED APPLICATION

Coil can be matched to heating products as listed in table below.

NO. OF COIL SLABS	COIL PLENUM WIDTH	GAS FURNACE 80% UPFLOW, DOWNFLOW & HORIZONTAL MODELS					GAS FURNACE 34" 90 PLUS UPFLOW, DOWNFLOW & HORIZONTAL CONDENSING MODELS				
		05	07	10	12	15	04	06	07	10	12
4	14	A									
4	17.5		A & B				A & B	A & B			
6	17.5	E	A				A	A			
6	21			A & B					A & B	A & B	
8	21		E	A					A	A	
8	24.5				A & B	A & B					A & B
10	24.5			E	A	A					A
FURNACE WIDTH IN. [mm]		14 [355.6]	17.5 [444.5]	21 [533.4]	24.5 [622.3]		17.5 [444.5]		21 [533.4]		24.5 [622.3]

NOTES: BOLD AREAS INDICATE FLUSH FIT APPLICATIONS

- A—Upflow/Downflow/Horizontal Application. Horizontal application requires field installed horizontal drain pan accessory RXBD-DA (One pan fits all).
- B—Upflow/Downflow/Horizontal Application. Requires use of RXBA-AA internal coupler accessory.
- E—Upflow and Horizontal application requires external plenum adapter accessory RXBA-AC.
Downflow/Horizontal application requires external plenum adapter accessory RXBA-AD.

[] Designates Metric Conversions