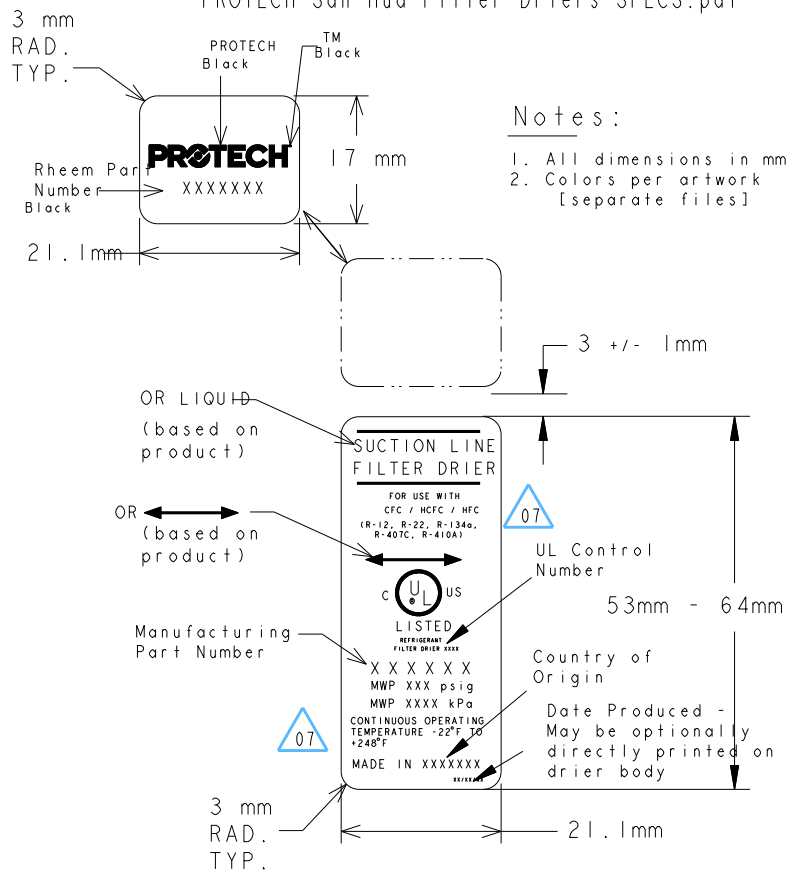


PART NO.	SUPPLIER	SUPPLIER P/N	INDUSTRY CODE	FITTING SIZE/TYP. IN.	DIM A (OVERALL LENGTH) (IN.)	DIM D (INSERTION DEPTH) (IN.)	DIM E (REF.) (BODY LENGTH) (IN.)	DIM F (BODY DIAMETER) (IN.)	MAXIMUM WORKING PRESSURE (PSIG)	FILTRATION (MICRON)	UL/CUL FILE NUMBER	AHRI FLOW CAPACITY R-22 @1PSI ΔP (TONS)	AHRI FLOW CAPACITY R-410A @1PSI ΔP (TONS)	PACKING (NOTE 7)
83-25152-01*	EMERSON	UBF-083	083	3/8 SAE	5-15/16	----	3-13/16	2-5/8	680	40	SA3124	3.5	3.6	BOX
83-25152-02*	EMERSON	UBF-084	084	1/2 SAE	6-3/16	----	3-13/16	2-5/8	680	40	SA3124	4.5	4.6	BOX
83-25152-03	EMERSON	UBF-083S	083S	3/8 ODF	5-9/32	13/32	3-13/16	2-5/8	680	40	SA3124	4.0	4.1	BOX
83-25152-04*	EMERSON	UBF-084S	084S	1/2 ODF	5-3/8	1/2	3-13/16	2-5/8	680	40	SA3124	5.0	5.1	BOX
83-25152-05	EMERSON	UBF-163S	163S	3/8 ODF	6-1/16	13/32	4-5/8	3-1/8	680	40	SA3124	4.5	4.6	BOX
83-25152-06*	EMERSON	UBF-164S	164S	1/2 ODF	6-3/16	1/2	4-5/8	3-1/8	680	40	SA3124	5.2	5.3	BOX
83-25152-07*	EMERSON	UBF-165S	165S	5/8 ODF	6-3/8	5/8	4-5/8	3-1/8	680	40	SA3124	6.0	6.1	BOX
83-25152-08*	EMERSON	UBF-082S	082S	1/4 ODF	5-1/4	3/8	3-13/16	2-5/8	680	40	SA3124	1.6	1.6	BOX
83-25152-09	SANHUA	STG-F08030-903	083S	3/8 ODF	5-11/32	3/8	3-7/8	2-23/32	700	20	SA11830	3.9	3.9	BULK
83-25152-10	SANHUA	STG-F16030-903	163S	3/8 ODF	6-1/8	3/8	4-5/8	3-3/16	700	20	SA11830	6.6	6.6	BULK

FIG 3: PRODUCT LABELS
REF. RHEEM SPECIFICATION
PROTECH San Hua Filter Driers SPECS.pdf



Notes:

1. All dimensions in mm
2. Colors per artwork [separate files]

07	CHD UL LISTED LABEL TO REMOVE R-502 REFRIGERANT & ADD CONTINUOUS OPERATING TEMP -22F TO +248 DEG F DGR	06-13-2016
06	CHD DIM F TOL. FROM ±.030 TO ±.060 CHD DIM A, PN -09 FROM 5-5/16 TO 5-11/32, DIM F, PN -09 FROM 2-5/8 TO 2-23/32, PN -10 FROM 3 TO 3-3/16 DGR	08-01-2014
05	ADDED REF. TO DIM E DGR	07-28-2014

<p>CONFIDENTIAL</p> <p>THIS PRINT AND THE SPECIFICATIONS ARE THE PROPERTY OF RHEEM MANUFACTURING AND HAS BEEN ISSUED WITH THE UNDERSTANDING THAT IT WILL NOT BE REPRODUCED, REVEALED TO OR USED FOR THE MANUFACTURE FOR OTHERS, AND WILL BE RETURNED UPON REQUEST.</p>	STANDARD TOLERANCE UNLESS OTHERWISE SPECIFIED	<p>REVISIONS</p>
	-FRACTIONAL ±1/32	
	-ANGULAR ±2°	
	-DECIMAL 2 Plc ±.03 3 Plc ±.010	
	-DIMENSIONS IN () REF. ONLY	
<p>NO REVISION TO DESIGN, MATERIAL, TOOLING, OR PROCESS IS ACCEPTABLE WITHOUT PRIOR APPROVAL FROM RHEEM THROUGH A REVISED ENGINEERING SPECIFICATION AND A RESAMPLING OF PARTS. THE SUPPLIER IS RESPONSIBLE FOR NOTIFYING RHEEM PARTS DIVISION IN WRITING OF ANY CHANGES AFFECTING PRODUCT QUALITY, PERFORMANCE, RELIABILITY, PACKAGING, DELIVERY OR WORKMANSHIP. ANY DOCUMENTS REFERRED TO ON THIS DRAWING ARE INCLUDED IN THE SPECIFICATIONS FOR THIS COMPONENT.</p>		

04	ADDED TOLERANCE TABLE. ADDED DIM D NOTE - SOCKET DEPTH, ADDED NOTE 10 DGR	07-25-2014
03	ADDED SANHUA FILTER DRIERS. ADDED NOTE SHT2, ADDED PACKAGING TYPE, REDRAWN IN PRO-E DGR	06-27-2014
02	REVISED TITLE BLOCK	10-31-2007

<p>Replacement Parts Division</p>	<p>MODELED BY DGR 04-01-2014</p> <p>APPROVED BY WCM 06-27-2014</p>	<p>NOTE: ALL BRAKES ARE 90° UNLESS OTHERWISE SPECIFIED</p>	<p>PART NO. SHEET 2 of 2</p> <p>83-25152-XX</p>	<p>REV</p> <p>-07</p>
	<p>PROTECH FILTER DRIERS</p> <p>LIQUID LINE - BI-FLOW</p>			