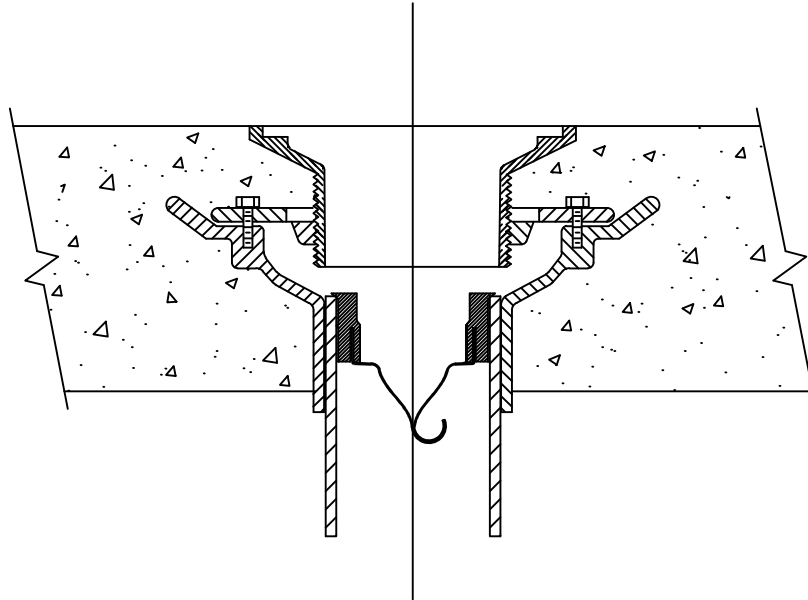


TRAP GUARD INSERT PROTECTION

CAN BE USED ABOVE OR BELOW GROUND FLOOR

TRAP GUARD INSERT FITTING
FITS INSIDE OF CAST IRON OR PLASTIC PIPE



□ PART NO. TG34IP 3" INSERT FITS INSIDE 4" CAST IRON OR PLASTIC PIPE

FOR TRAP GUARDS INSERTING INTO GASKET CONNECTED DRAINS, SEE DRAWING TG-23-G

IMPORTANT INSTALLATION NOTES:

1. The Trap Guard device comes inside a PVC insert that fits inside a 4" Cast Iron or PVC pipe.
2. The part is inserted into a 4" open ended pipe. (See drwg. TG-23G for gasket connected drains)
3. It may be necessary to use a lubricant on the outside of the bushing for an easier insertion.
4. To make a watertight seal, use an adhesive type caulk under the top flange and between the PVC insert and the 4" pipe.

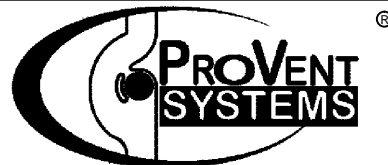
Note: Care should be taken not to touch the flexible material with the primer or cement.

MAINTENANCE INSTRUCTIONS:

The Trap Guard device should be inspected periodically for build up of any type debris. The device should then be flushed out thoroughly with clear warm water. Not to be used on waxed or grease laden floors.



NO FIRE RATINGS ARE
REQUIRED FOR UNDERGROUND
PIPING OR OPENINGS



DATE :

3-20-15

DRG . NO .

TG34-IP