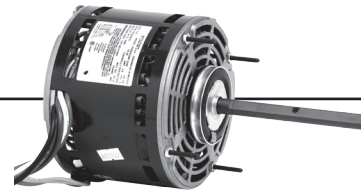


Direct Drive Fan & Blower Motors

PSC, 48 Frame, Open Air Over



APPLICATIONS:

Residential and commercial direct drive fans and blowers.

FEATURES:

- All angle mount
- Designed for use with 370V Capacitors except Catalog # 1405- 440V
- Class B Insulation
- Continuous Duty
- Stud Extensions
- Reversible Rotation
- Automatic Reset Thermal Overload Protector
- 2.5" Dia. Hub Rings Included, 2.25" Dia. Hub Rings for Catalog # 1690, 1692 & 1694

Single Speed

HP	Volts	RPM	Catalog Number	Amps	Cap. MFD	Bearing Type	Marathon Motor	Cross Reference
1/6	230	1550	1402	1	3	BALL	X475	
		1075	1404	1.1	5	BALL	X471	
	115	1625	1406	2.2	10	BALL	X477	
		1075	1405	2.3	7.5	BALL	X473	
1/4	230	1625	1407	1.2	4	BALL	X476	
		1075	1408	1.4	5	BALL	X474	

Three Speed

HP	Volts	RPM/SPD	Catalog Number	Amps	Cap. MFD	Bearing Type	Marathon Motor	Cross Reference
1/4	208-230	1625/3	1394	1.71	5	BALL	X014	
		1075/3	1971	1.5	7.5	SAB	X1001	C, G
	115	1625/3	1690	2.7	10	SAB	X013	C, G
		1075/3	1863	3.5	7.5	SAB	X000	C, G
1/3	208-230	1625/3	1693	2.1	5	SAB	X011	
		1075/3	1972	2.4	7.5	SAB	X003	C, G
	115	1625/3	1692	3.7	15	SAB	X015	C, G
		1075/3	1864	5	8	SAB	X002	C, G
1/2	208-230	1625/3	1695	3.1	7.5	SAB	X017	
		1075/3	1973	2.9	10	SAB	X005	C
	115	1625/3	1694	5.5	20	SAB	X016	C, G
		1075/3	1865	6.5	10	SAB	X004	C, G
3/4	208-230	1075/3	8905	4	15	SAB	X010	C, G
	115	1075/3	8904	9.5	15	SAB	X009	C, G
1	208-230	1625/3	1700	5.1	20	SAB	X211	

Cross-Reference Key

L = Leeson W = WEG B = Baldor C = Century G = Grainger

*Catalog numbers for all competitor products in cross-reference column and key are listed in back Cross Reference section.

† All marks shown within this document are properties of their respective owners.



16-8400-01