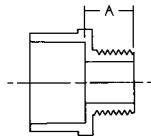
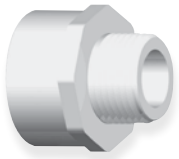


PVC Schedule 40 Pressure Fittings

ADAPTERS (Continued)

4604

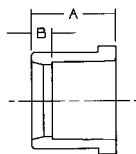
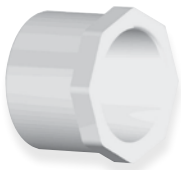


Reducing Male Adapter (MIPT X Slip)

UNIV. FIG. NO.	NOM. SIZE	APPROX. NET WT./LBS.	DIM. A INCHES
436-074	1/2 x 3/4	.039	7/8
436-101	3/4 x 1/2	.029	7/8
436-102	3/4 x 1	.064	15/16
436-130	1 x 1/2	.046	1 ³ / ₃₂
436-131	1 x 3/4	.049	13/32
436-132	1 x 1 ¹ / ₄	.099	1 ¹ / ₈
436-168	1 ¹ / ₄ x 1	.112	1 ¹ / ₃₂
436-169	1 ¹ / ₄ x 1 ¹ / ₂	.157	13/16
436-212	1 ¹ / ₂ x 1 ¹ / ₄	.107	1 ¹ / ₃₂
436-213	1 ¹ / ₂ x 2	.173	1 ¹ / ₈
436-251	2 x 1 ¹ / ₂	.154	1 ¹ / ₁₆
436-252	2 x 2 ¹ / ₂	.525	1 ⁵ / ₁₆

BUSHINGS

4618



Bushing (Spg x Slip)

UNIV. FIG. NO.	NOM. SIZE	APPROX. NET WT./LBS.	DIM. A INCHES	DIM. B INCHES
437-073	1/2 x 3/8	.010	15/16	1/4
437-101	3/4 x 1/2	.019	1 ⁷ / ₃₂	5/16
437-130	1 x 1/2	.046	1 ⁹ / ₃₂	1/2
437-131	1 x 3/4	.034	1 ⁹ / ₃₂	9/32
437-166	1 ¹ / ₄ x 1/2	.085	1 ⁷ / ₈	11/16
437-167	1 ¹ / ₄ x 3/4	.084	1 ¹ / ₂	3/4
437-168	1 ¹ / ₄ x 1	.061	1 ¹⁵ / ₁₆	13/32
437-209	1 ¹ / ₂ x 1/2	.140	1 ¹⁷ / ₃₂	5/8
437-210	1 ¹ / ₂ x 3/4	.114	1 ¹ / ₂	17/32
437-211	1 ¹ / ₂ x 1	.111	1 ¹ / ₂	7/16
437-212	1 ¹ / ₂ x 1 ¹ / ₄	.057	1 ¹ / ₂	1/4
437-247	2 x 1/2	.146	1 ¹¹ / ₁₆	25/32
437-248	2 x 3/4	.200	1 ⁹ / ₁₆	13/16
437-249	2 x 1	.158	1 ⁹ / ₁₆	1/2
437-250	2 x 1 ¹ / ₄	.170	1 ⁹ / ₁₆	5/16
437-251	2 x 1 ¹ / ₂	.131	1 ⁹ / ₁₆	1/4
437-287	2 ¹ / ₂ x 1/2	.320	1 ¹⁵ / ₁₆	1 ³ / ₃₂
437-288	2 ¹ / ₂ x 3/4	.320	1 ¹⁵ / ₁₆	31/32
437-289	2 ¹ / ₂ x 1	.330	1 ¹⁵ / ₁₆	27/32
437-290	2 ¹ / ₂ x 1 ¹ / ₄	.280	1 ¹⁵ / ₁₆	23/32
437-291	2 ¹ / ₂ x 1 ¹ / ₂	.330	1 ¹⁵ / ₁₆	19/32
437-292	2 ¹ / ₂ x 2	.201	1 ³¹ / ₃₂	19/32

Do not use or test the products in this catalog with compressed air or other gasses.

Plastic Irrigation Products

PVC SCHEDULE 40 BALL VALVES

NIBCO® PVC Schedule 40 Ball Valves are excellent for use in cold water pressure distribution systems in residential, commercial, agricultural and light industrial applications. Sizes range from 1/2" through 4" IPS. These valves feature a durable one-piece molded body, convenient quarter-turn action, and their 100 percent thermoplastic design eliminates process or atmospheric corrosion. PVC has excellent rigidity, corrosion and chemical resistance properties. PVC Schedule 40 Ball Valves are NSF approved and manufactured in an ISO 9002 certified facility. (Refer to page 55 for additional information)



PLASTIC FITTINGS



NIBCO® PVC Schedule 40 Pressure Fittings are ideal for use in irrigation, golf course construction, pool & spa, potable water, and chilled-water applications. PVC, one of the most frequently specified of all thermoplastic materials, has a high resistance to corrosion and chemical attack by acids, alkalies, salt solutions, and many other chemicals.

ABS DWV fittings are used for residential and commercial drain, waste, and vent non-pressure applications. ABS is an excellent high strength, high-impact thermoplastic material, resistant to a wide variety of materials ranging from sewage to commercial household chemical formulations. ABS is lightweight, safe to handle and easy to install.

PVC DWV fittings have been used for over 50 years in residential and commercial drain, waste, and vent non-pressure applications. PVC DWV can be found in such areas as chemical processing, industrial plating, chilled water distribution, chemical drainage and irrigation systems.

Do not use or test the products in this catalog with compressed air or other gasses.