

**MOLDED STONE® INTEGRAL DRAIN  
MOP SERVICE BASIN**

**MSBID2424**

- Molding done in matched metal dies under heat and pressure resulting in a one-piece homogeneous product
- Integral drain is molded into a one piece unit and designed to connect to a 3" (76mm) drain pipe with a QIC3XH gasket
- Stainless steel strainer included

**Nominal Dimensions:**

24" x 24" x 10"  
(610 x 610 x 254mm)

**Shipping Weight:**

27lbs. (12.3 Kg)



**Optional Components:**

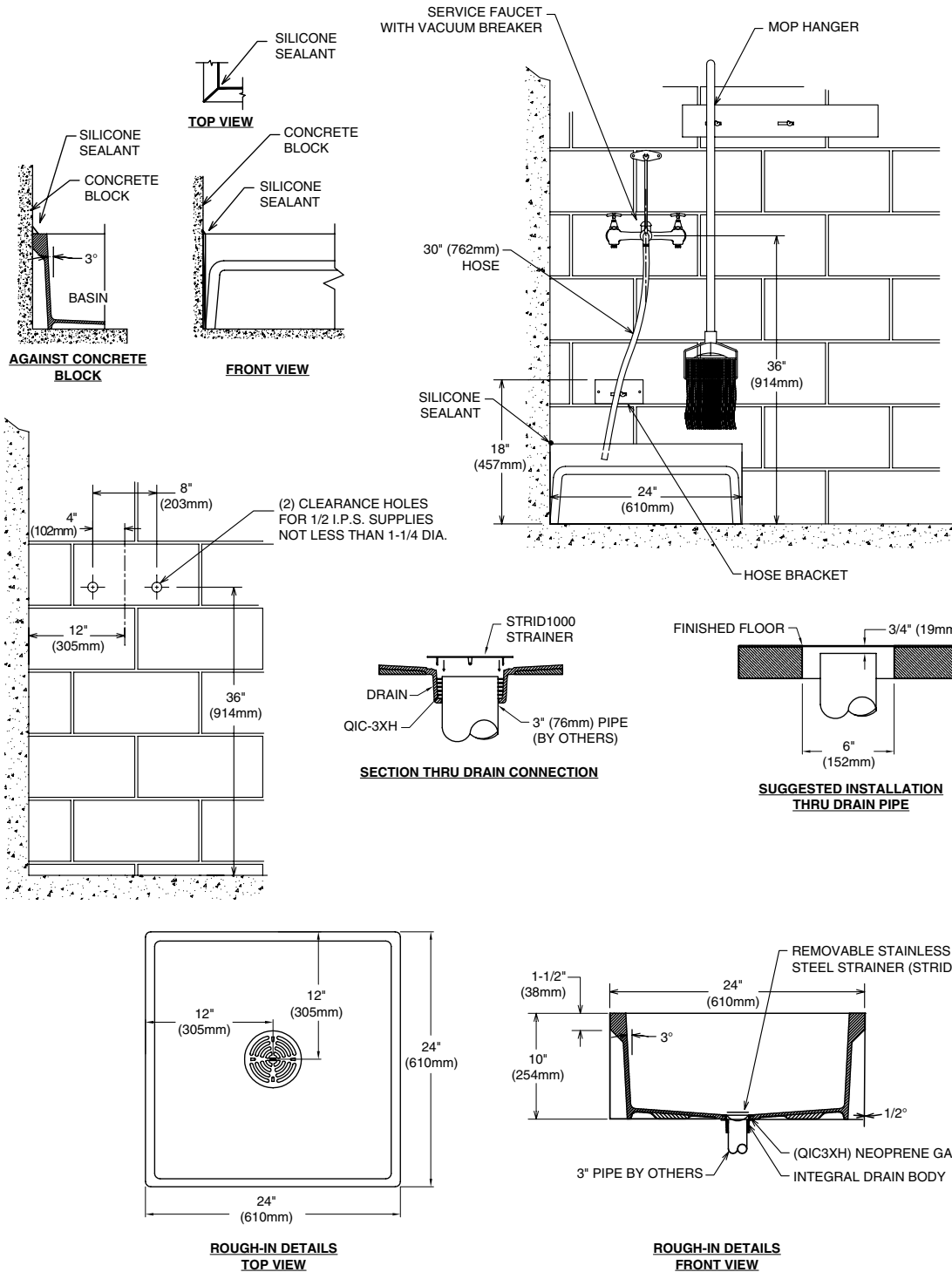
- QIC32** Quick Drain Connector for 2" pipe. Order separately.
- QIC3SN** Quick Drain Connector for 3" cast iron soil pipe. Order separately
- 830AA** Service Faucet:
  - Chrome plated with vacuum breaker, integral stops, adjustable wall brace, pail hook and 3/4" hose thread on spout
- 832AA** Hose & Hose Bracket
- 889CC** Mop Hanger
- 833AA** Silicone Sealant
- E77AA24** Vinyl Bumperguard
- MSG2424** Stainless Steel Wall Guard

SEE REVERSE FOR ROUGHING-IN DIMENSIONS

**Compliance Certifications -**

**Meets or Exceeds the Following Specifications:**

- IAPMO / ANSI Z124.6-2007
- ASME A112.18.2 / CSA B125.2
- CSA B45.5
- Made in U.S.A.



**Installation Note :** QIC32 Quick Drain Connector for 2" pipe or QIC3SN Quick Drain Connector for cast iron soil pipe must be ordered separately.

**IMPORTANT:** Roughing-in dimensions may vary 1/2" and are subject to change or cancellation without prior notice.

**Customer Service Canada**  
1-800-387-0369  
www.fiat.ca

**FIAT**  
QUALITY FOR LIFE  
**Customer Service United States**  
1-800-442-1902  
www.fiatproducts.com