

Flexible Coupling Part Number Chart

- **Cast Iron Soil Pipe**
 - Extra Heavy (XH)
 - Service Weight (SV)
 - No-Hub (NH)

- **Clay**
- **Concrete**

- **Plastic**
 - ABS / PVC (DWW Schedule 40, 80, 120) 4" - 12"
 - PVC / Sewer & Drain (ASTM D 3034) 4" - 15"
 - PVC Large Dia. Sewer Pipe (ASTM F 679) 18" - 48"

- **Steel**
- **Lead**

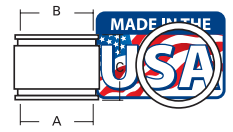
- **Copper**
- **Asbestos Cement Fibre**
- **Ductile Iron**
- **C 900** (Ductile Iron Pipe Size)
- **Corrugated** (Use 1070 Series)

*Designated part numbers come with an insert bushing.

SERIES	1001	1002	1003	1004	1005	1006	1051	1055	1056
PIPE SIZES	Clay TO Clay	Clay TO Cast Iron, Plastic, Copper, Steel or Lead	Clay TO Asbestos Cement Fibre or Ductile Iron	Concrete TO Concrete	Concrete TO Clay	Concrete TO Cast Iron, Plastic, Copper, Steel or Lead	Asbestos Cement Fibre or Ductile Iron TO Cast Iron, Plastic, Copper, Steel or Lead	Asbestos Cement Fibre or Ductile Iron TO Asbestos Cement Fibre or Ductile Iron	Cast Iron, Plastic, Copper, Steel or Lead TO Cast Iron, Plastic, Copper, Steel or Lead
4" to 2"		1002-42							1056-42
4" to 3"		1002-43				1006-43	1051-43*		1056-43
4" to 4"	1001-44	1002-44	1003-44	1004-44	1005-44*	1006-44	1051-44	1055-44	1056-44
4" to 6"		1002-46	1003-46			1006-46	1051-46		
5" to 3"									1056-53
5" to 4"	1001-54	1002-54*	1003-54*				1051-54	1055-54*	1056-54
5" to 5"	1001-55	1002-55	1003-55				1051-55	1055-55	1056-55
6" to 3"									1056-63*
6" to 4"	1001-64	1002-64	1003-64	1004-64*	1005-64*	1006-64	1051-64	1055-64	1056-64
6" to 5"	1001-65	1002-65	1003-65*			1006-65*	1051-65	1055-65	1056-65
6" to 6"	1001-66	1002-66	1003-66	1004-66	1005-66*	1006-66	1051-66	1055-66	1056-66
8" to 4"									1056-84*
8" to 5"			1003-85*						
8" to 6"	1001-86	1002-86	1003-86*	1004-86*	1005-86*	1006-86*	1051-86*	1055-86*	1056-86
8" to 8"	1001-88	1002-88	1003-88	1004-88	1005-88*	1006-88	1051-88	1055-88	1056-88
10" to 6"		1002-10-6*	1003-10-6*			1006-10-6*			1056-10-6*
10" to 8"	1001-10-8*	1002-10-8*	1003-10-8*	1004-10-8		1006-10-8*	1051-10-8*	1055-10-8*	1056-10-8
10" to 10"	1001-1010	1002-1010	1003-1010*	1004-1010	1005-1010	1006-1010	1051-1010	1055-1010	1056-1010
12" to 8"		1002-12-8*				1006-12-8*		1055-12-8*	1056-12-8*
12" to 10"	1001-1210	1002-1210*	1003-1210*	1004-1210*	1005-1210*	1006-1210*	1051-1210*	1055-1210*	1056-1210
12" to 12"	1001-1212	1002-1212	1003-1212	1004-1212	1005-1212*	1006-1212	1051-1212	1055-1212	1056-1212
15" to 10"	1001-1510*	1002-1510*	1003-1510*						
15" to 12"	1001-1512*	1002-1512*	1003-1512*		1005-1512*				1056-1512
15" to 15"	1001-1515	1002-1515	1003-1515*	1004-1515	1005-1515*	1006-1515			1056-1515
16" to 15"			1003-1516				1051-1615	1055-1615*	
18" to 15"									1056-1815*
18" to 18"	1001-1818	1002-1818	1003-1818*	1004-1818		1006-1818*	1051-1818	1055-1818	1056-1818
21" to 21"	1001-2121	1002-2121*		1004-2121		1006-2121*			1056-2121
24" to 24"	1001-2424	1002-2424*		1004-2424		1006-2424*			1056-2424
27" to 27"	1001-2727	1002-2727*		1004-2727		1006-2727*			1056-2727

Flexible Couplings - SIZING CHARTS for STOCK COUPLINGS

*Designated part numbers come with an insert bushing.



1001 Series - Clay to Clay

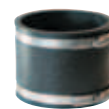
Part No.	A		B		C	
	in.	mm	in.	mm	in.	mm
1001-44	5.29	134	5.29	134	4.10	104
1001-44WC	5.51	140	5.51	140	3.97	101
1001-54	6.05	154	5.54	141	5.00	127
1001-55	6.48	165	6.48	165	5.97	152
1001-64	7.39	188	5.63	143	6.02	153
*1001-64WC	8.00	203	5.50	140	6.00	152
1001-65	7.35	187	6.61	168	5.76	146
1001-66	7.50	191	7.50	191	6.00	152
1001-66WC	8.01	203	8.01	203	5.91	150
*1001-84	9.50	241	5.13	130	5.68	144
*1001-86	9.50	241	7.13	181	5.68	144
1001-86WC	9.96	253	7.80	198	5.93	151
1001-88	9.65	245	9.65	245	6.00	152
1001-88WC	9.96	253	9.96	253	5.93	150
*1001-10-8	12.50	318	9.65	245	6.13	156
1001-1010	12.40	315	12.40	315	6.00	152
1001-1010WC	12.40	315	12.40	315	5.90	150
1001-1210	14.50	368	12.50	318	6.37	162
1001-1212	14.51	369	14.51	369	6.00	152
1001-1212WC	15.25	387	15.25	387	6.42	163
*1001-1510	18.14	461	12.60	320	10.14	258
*1001-1512	18.14	461	14.38	365	6.85	174
1001-1515	18.14	461	18.14	461	9.89	251
1001-1818	21.90	556	21.90	556	9.63	245
1001-2121	25.40	645	25.40	645	9.89	251
1001-2424	28.97	736	28.97	736	9.89	251
1001-2727	32.40	823	32.40	823	9.89	251



1002 Series - Clay to Cast Iron, Plastic, Copper, Steel or Lead

Part No.	A		B		C	
	in.	mm	in.	mm	in.	mm
*1002-42	5.25	133	2.38	60	3.91	99
1002-43	5.25	133	3.38	86	3.91	99
*1002-43WC	5.40	137	3.50	89	4.00	102
1002-44	5.14	131	4.52	115	3.96	101
1002-44WC	5.40	137	4.56	116	4.00	102
1002-46	5.18	132	6.39	162	5.82	148
*1002-54	6.05	154	4.38	111	5.28	134
*1002-54WC	6.84	174	4.29	109	5.93	151
1002-55	6.05	154	5.54	141	5.03	128

*1002-55WC	6.81	173	5.17	131	5.81	148
1002-64	7.34	186	4.50	114	5.56	141
*1002-64WC	8.00	203	4.50	114	6.00	152
1002-65	7.39	188	5.63	143	5.68	144
1002-66	7.35	187	6.61	168	5.76	146
1002-66WC	8.00	203	6.66	169	6.00	152
*1002-84	9.33	237	4.38	111	5.93	151
1002-86	9.33	237	6.20	157	5.93	151
*1002-86WC	10.00	254	6.38	162	6.00	152
1002-88	9.63	245	8.64	219	5.74	146
1002-88WC	10.00	254	8.66	220	6.00	152
*1002-10-6	12.50	318	6.38	162	6.38	162
*1002-10-8	12.50	318	8.50	216	6.13	156
1002-1010	12.50	318	10.50	267	5.88	149
1002-1010WC	12.60	320	10.60	269	6.37	162
*1002-1210	14.50	368	10.75	273	6.60	168
1002-1212	14.50	368	12.50	318	6.37	162
1002-1212WC	16.29	414	12.39	315	6.30	160
*1002-1215	15.38	391	14.38	365	6.32	161
*1002-12-8	14.50	368	8.50	216	6.60	168
*1002-1510	18.14	461	10.60	269	6.85	174
*1002-1512	18.14	461	12.60	320	6.85	174
1002-1515	18.14	461	15.60	396	6.85	174
1002-1515WC	19.82	503	15.43	392	9.68	246
1002-1818	21.90	556	18.88	480	9.63	245
*1002-1818WC	22.59	574	18.90	480	9.89	251
*1002-2121	25.40	645	22.30	566	10.14	258
*1002-2424	28.97	736	25.00	635	10.14	258
*1002-2727	32.40	823	28.20	716	10.14	258



1003 Series - Clay to Asbestos Cement Fibre or Ductile Iron

Part No.	A		B		C	
	in.	mm	in.	mm	in.	mm
1003-44	5.39	137	4.89	124	3.92	100
1003-44WC			5.00	127		
1003-46	5.17	131	6.81	173	5.81	148
*1003-54	6.05	154	5.00	127	5.28	134
1003-55	6.00	152	5.86	149	4.91	125
1003-64	7.39	188	5.63	143	5.68	144
*1003-64WC	8.01	203	5.00	127	5.95	151
*1003-65	7.35	187	5.90	150	6.00	152
1003-66	7.31	186	6.99	178	5.92	150
*1003-66WC	8.01	203	6.80	173	5.95	151
*1003-85	9.33	237	5.90	150	6.18	157

