

For Residential and Commercial Applications

| | | | |
|----------------|--|----------------------|--|
| Job Name | | Engineer / Architect | |
| Job Location | | Wholesaler | |
| Submittal Date | | Contractor | |

1-****DL/ 3-****DL** Copper Toilet Riser – One-Piece w/ Gasket Nosepiece**

Use: For use with water in accessible locations only.

Design Features:

- **One-piece construction**
- **Cut to Length** for professional finished appearance

Operating Specifications:

Temperature: 40°- 180° F
Pressure: 125 PSI maximum

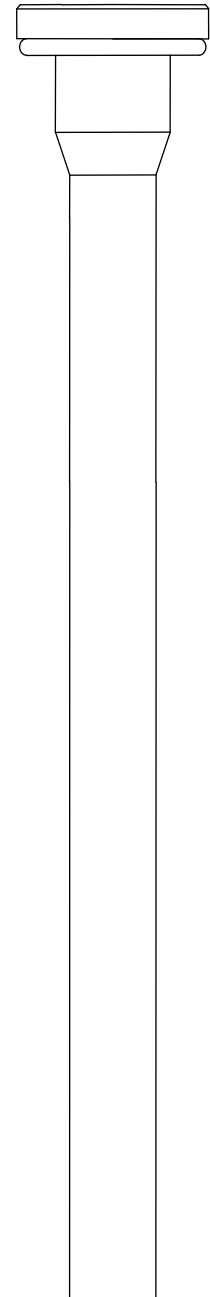


Tubing Diameter: 0.375" O.D. or 0.500" O.D.

| MATERIAL SPECIFICATIONS | |
|--------------------------------|----------------------|
| Tube | Copper per ASTM B-68 |
| Nosepiece | TPE |

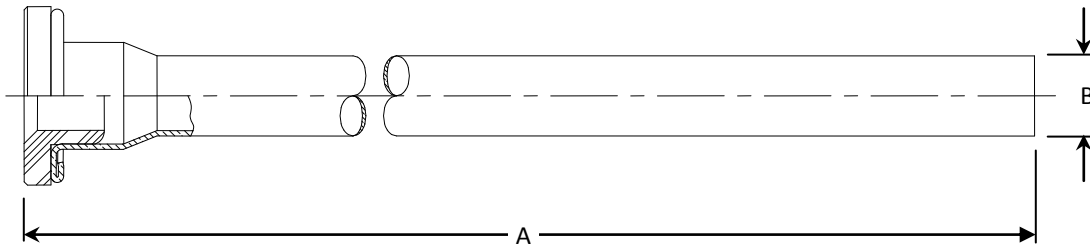
Part Listing:

- 1-12DL C 3/8" OD tube x 11-1/2" length, chrome plated
- 1-12DL CBT 3/8" OD tube x 11-1/2" length, chrome plated, plain label, bulk
- 1-12DL CF 3/8" OD tube x 11-1/2" length, chrome plated, flag label
- 1-12DL CH 3/8" OD tube x 11-1/2" length, chrome plated
- 1-12DL C1 3/8" OD tube x 11-1/2" length, chrome plated, individually boxed
- 1-12DL R 3/8" OD tube x 11-1/2" length, rough finish
- 1-12DL BZP 3/8" OD tube x 11-1/2" length, oil rubbed bronze, bagged
- 1-12DL NSP 3/8" OD tube x 11-1/2" length, satin nickel, bagged
- 1-15DL C 3/8" OD tube x 14-1/2" length, chrome plated
- 1-20DL C 3/8" OD tube x 19-1/2" length, chrome plated
- 1-20DL CBT 3/8" OD tube x 11-1/2" length, chrome plated, plain label, bulk
- 1-20DL CF 3/8" OD tube x 19-1/2" length, chrome plated, flag label
- 1-20DL CFL 3/8" OD tube x 19-1/2" length, chrome plated, 10 pack
- 1-20DL CH 3/8" OD tube x 19-1/2" length, chrome plated
- 1-20DL C1 3/8" OD tube x 19-1/2" length, chrome plated, individually boxed
- 1-20DL BZP 3/8" OD tube x 19-1/2" length, oil rubbed bronze, bagged
- 1-20DL NPP 3/8" OD tube x 19-1/2" length, polished nickel, bagged
- 1-20DL NSP 3/8" OD tube x 19-1/2" length, satin nickel, bagged
- 1-20DL PP 3/8" OD tube x 19-1/2" length, polished brass, bagged
- 3-12DL-1 R 1/2" OD tube x 11-1/2" length, no gasket, rough finish



This specification and all information contained herein is the confidential and exclusive property of Brasscraft Manufacturing Co., and shall not be disclosed to others without the written consent of Brasscraft Mfg Co. This specification must be returned to Brasscraft Mfg. Co. if requested.

1-****DL/ 3-****DL** Copper Toilet Riser – One-Piece w/ Gasket Nosepiece**



| PART DIMENSIONS (Inches) | | |
|---------------------------------|---------------|---------------|
| Model | DIM. A | DIA. B |
| 1-12DL | 11.56 | 3/8 |
| 1-15DL | 14.56 | 3/8 |
| 1-20DL | 19.56 | 3/8 |
| 3-12DL | 11.56 | 1/2 |

Listings & Certifications:

- IAPMO listed to ASME A112.18.1 / CSA B125.1 (File # 0645)



This specification and all information contained herein is the confidential and exclusive property of Brasscraft Manufacturing Co., and shall not be disclosed to others without the written consent of Brasscraft Mfg Co. This specification must be returned to Brasscraft Mfg. Co. if requested.