

T555.502 Bath/Shower Trim Shown with M962055 Decorative Screw Cover Plate

GENERAL DESCRIPTION:

SHOWERHEAD

4-1/2" Rain showerhead at maximum 2.5 gpm/9.5 L/min. flow rate.

WALL TUB SPOUT

Metal slip-on diverter spout.

WALL VALVE TRIM

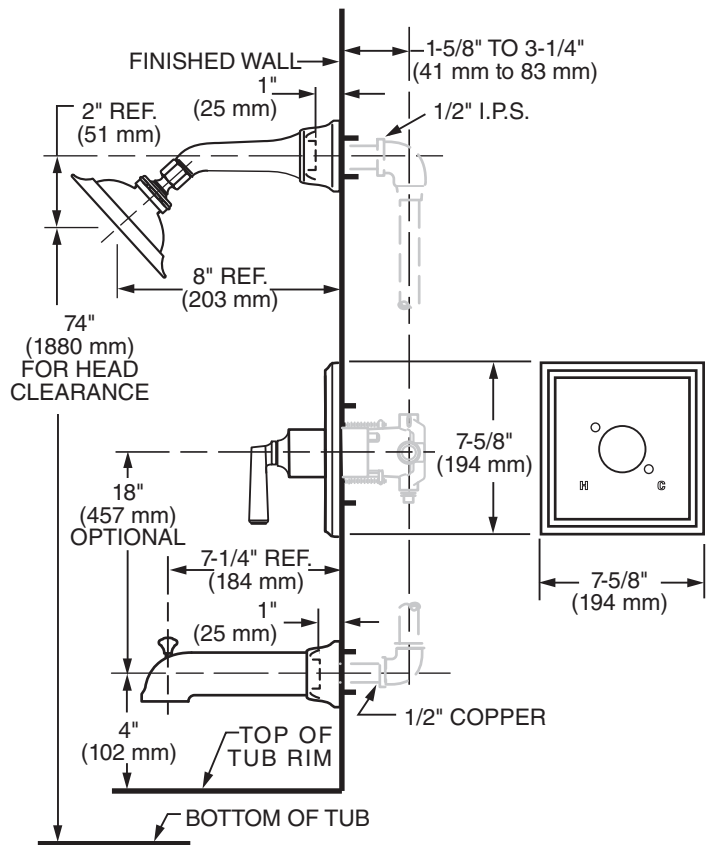
Available with metal lever handle.
 Metal wall escutcheon.

MODEL NUMBER:

TRIM KITS:

- ☐ **T555.502 Town Square BATH/SHOWER Trim Kit**
 Metal Lever Handle. LESS Valve Body.
- ☐ **T555.501 Town Square SHOWER ONLY Trim Kit**
 Metal Lever Handle. LESS Valve Body.
- ☐ **T555.500 Town Square VALVE ONLY Trim Kit**
 Metal Lever Handle. LESS Valve Body.
- ☐ **ADDITIONAL ACCESSORY:**
M962055 Decorative Screw Cover Plate.

*For use with R110 Series Pressure Balance Valves.
 See reverse side for available Rough Valves.*

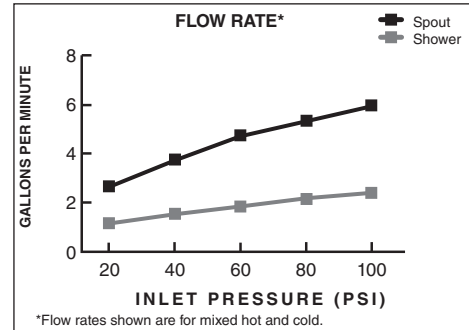


SUGGESTED SPECIFICATION:
 Bath/shower fitting shall feature 4-1/2" rain showerhead with Max. 2.5 gpm/9.5 L/min. flow rate. Fitting shall be: American Standard Trim Kit Model # T555.50____ and Valve Body Model # R11__.

CODES AND STANDARDS

These products meet or exceed the following codes and standards:

- ANSI A 117.1
- ASSE 1016
- ASME A112.18.1
- CSA B 125.1



Modifications	Parts Suffix*
	__IPT
	__WD

*To modify a product, add suffix after the 4th digit (ex. T064**I**TP502.002)

TRIM KITS *	Product Number	Description	Finish Options		
			Polished Chrome	Oil Rubbed Bronze	PVD Satin Nickel
			002	224	295
	T555.502	Bath/Shower Trim Kit. Metal Lever Handle. LESS Valve Body.			
	T555.501	Shower Only Trim Kit. Metal Lever Handle. LESS Valve Body.			
	T555.500	Valve Only Trim Kit. Metal Lever Handle. LESS Valve Body.			
	M962055	Decorative Screw Cover Plate			

ROUGH VALVE BODIES	Product Number	Description
	R111	Rough Valve Body less trim. Universal inlets/outlets.
	R111SS	Rough Valve Body less trim. Universal inlets/outlets with Screwdriver Stops.
	R110	Rough Valve Body less trim. Direct sweat inlets/outlets.
	R110SS	Rough Valve Body less trim. Direct sweat inlets/outlets with Screwdriver Stops.
	R115	Rough Valve Body less trim. Female Thread inlets/outlets.
	R115SS	Rough Valve Body less trim. Female Thread inlets/outlets with Screwdriver Stops.
	R117	Rough Valve Body less trim. PEX inlets/universal outlets for Crimp Ring PEX system (ASTM F1807).
	R117SS	Rough Valve Body less trim. PEX inlets/universal outlets for Crimp Ring PEX system (ASTM F1807) with Screwdriver Stops.
	R118	Rough Valve Body less trim. PEX inlets/universal outlets for Cold Expansion PEX system (ASTM F1960).
	R118SS	Rough Valve Body less trim. PEX inlets/universal outlets for Cold Expansion PEX system (ASTM F1960) with Screwdriver Stops.
	R119	Rough Valve Body less trim. CPVC inlets/universal outlets.
R119SS	Rough Valve Body less trim. CPVC inlets/universal outlets with Screwdriver Stops.	

Meets the American Disabilities Act Guidelines and **ANSI A117.1** Requirements for the physically challenged.