

Tailpiece

TAILPIECES



H-551-A

The tailpiece is the connection between the valve body and the control stop. Sloan adjustable and ground joint tailpieces are threaded into the valve body at the factory. Sloan tailpieces are available in a variety of lengths to accommodate installation rough-in errors and unique installation requirements.

Sloan flushometer brands feature three types of tailpiece connections:



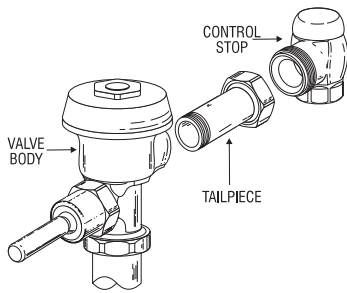
H-551 ADJUSTABLE TAILPIECE



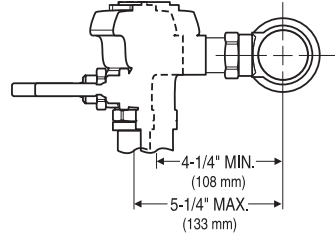
H-5 GROUND JOINT TAILPIECE



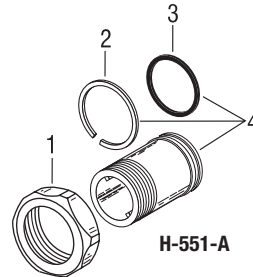
H-130-A ADJUSTABLE GROUND JOINT TAILPIECE



H-551-A ADJUSTABLE TAILPIECE CONNECTION

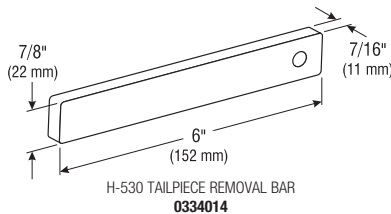


The majority of flushometers supplied by Sloan since 1964 feature the H-551-A adjustable tailpiece. The valve tailpiece connects to the control stop with a sliding O-ring seal. The H-551-A adjustable tailpiece standard length is 2-1/16" (54 mm). This is designed for a standard flushometer installation in which the distance between the centerline of the valve and the centerline of the water supply inlet is 4-3/4" (121 mm). The adjustable tailpiece allows for a variance of $\pm 1/2$ " (13 mm) from this nominal dimension.



H-551-A

TAILPIECE REPLACEMENT



H-530 TAILPIECE REMOVAL BAR
0334014

Sloan adjustable and ground joint tailpieces are assembled into the valve body using a pipe thread. Significant force is used to drive the tailpiece into the valve body. As such, removal of the old tailpiece may be difficult.

For replacement, we recommend using the **H-530 tailpiece removal bar** (Code No. **0334014**). Remove the flushometer cover and interior parts. Secure the tailpiece removal bar vertically in a vice. Place the flushometer tailpiece over the bar. The cast lugs inside the tailpiece will catch on the bar. Insert a length of 3/4" pipe into the barrel of the valve body. Unscrew tailpiece from valve body.

Assemble the new tailpiece into the valve body in the reverse manner. Use teflon tape (or pipe sealant) on tailpiece pipe threads. Ensure that both the coupling and the locking ring (adjustable tailpiece only) are on the tailpiece before tightening the assembly. Do NOT use sealant on the first few threads of the tailpiece.

Item

Item No.	Code No.	Part No.	Description
1.	0308676	H-550	Coupling CP
	0308690	H-550	Coupling RB
2.	5308381	H-552	Locking Ring – 12 per package
3.	5308696	H-553	O-Ring – 24 per package
4.	0308801	H-551-A	2-1/16" (53 mm) Tailpiece Assembly† CP
	0308802	H-551-A	2-1/16" (53 mm) Tailpiece Assembly† RB
	0308803	H-551-A	3-1/16" (78 mm) Tailpiece Assembly† CP
	0308805	H-551-A	4-1/16" (103 mm) Tailpiece Assembly† CP
	0308807	H-551-A	5-1/16" (129 mm) Tailpiece Assembly† CP
	0308809	H-551-A	6-1/16" (154 mm) Tailpiece Assembly† CP

† Each tailpiece assembly includes an H-553 O-Ring and an H-552 locking ring.

Abbreviations: CP: chrome plated; RB: rough brass

Sloan Valve Company can also provide products not shown in our current catalog. For our special finishes, consult factory for part numbers.