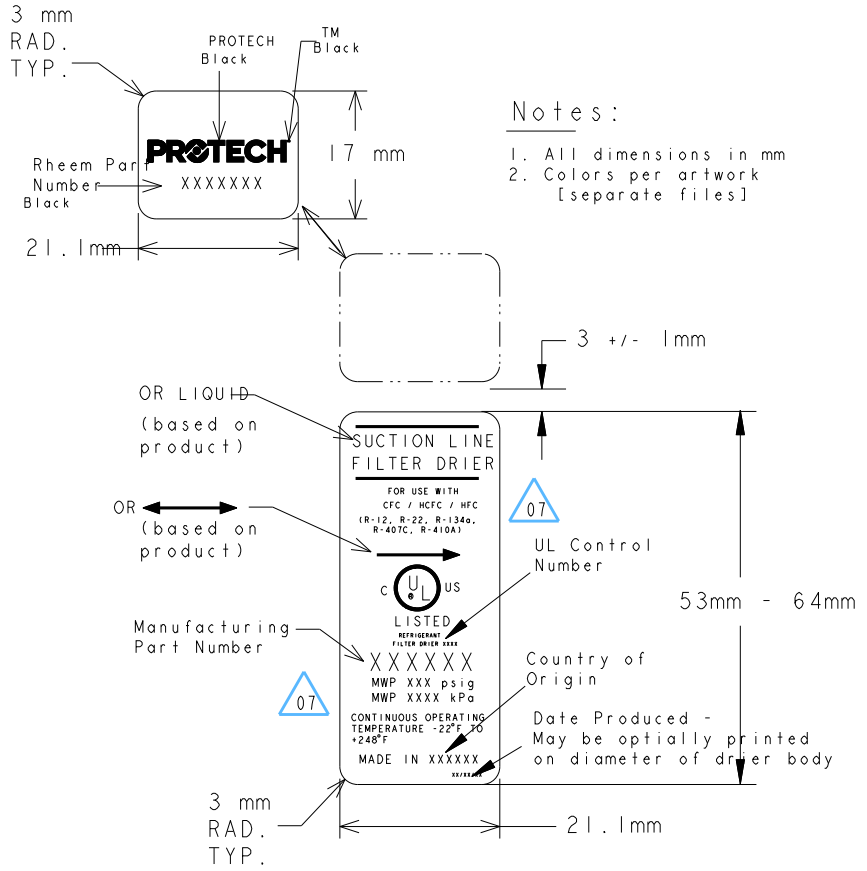


PART NO.	SUPPLIER	SUPPLIER P/N	INDUSTRY CODE	FITTING SIZE/TYP. IN.	DIM A (OVERALL LENGTH) (IN.)	DIM D (INSERTION DEPTH) (IN.)	DIM E REF. (BODY LENGTH) (IN.)	DIM F (BODY DIAMETER) (IN.)	MAXIMUM WORKING PRESSURE (PSIG)	FILTRATION (MICRON)	UL/CUL FILE NUMBER	AHRI FLOW CAPACITY R-22 @ 1 PSI ΔP (TONS)	AHRI FLOW CAPACITY R-410A @ 1 PSI ΔP (TONS)	PACKING (NOTE 7)
83-25151-39*	EMERSON	UD-417S	417S	7/8 ODF	10	3/4	7-5/8	3-11/16	680	20	SA2124	22.0	22.0	BOX
83-25151-40	SANHUA	DTG-F05030-903	053S	3/8 ODF	4-1/2	3/8	3	2-23/32	700	20	SA11830	5.9	5.9	BULK
83-25151-41	SANHUA	DTG-F08030-903	083S	3/8 ODF	5-11/32	3/8	3-7/8	2-23/32	700	20	SA11830	6.3	6.3	BULK
83-25151-42	SANHUA	DTG-F16030-903	163S	3/8 ODF	6-1/8	3/8	4-5/8	2-23/32	700	20	SA11830	6.2	6.2	BULK
83-25151-43	SANHUA	DTG-F16040-903	164S	1/2 ODF	6-17/32	1/2	4-5/8	2-23/32	700	20	SA11830	8.2	8.2	BULK

FIG 3: PRODUCT LABELS
REF. RHEEM SPECIFICATION
PROTECH San Hua Filter Driers SPECS.pdf



07	CHD UL LISTED LABEL TO REMOVE R-502 REFRIGERANT & ADD CONTINUOUS OPERATING TEMP -22F TO +248 DEG F DGR	06-13-2016
06	CHD DIM F TOL. FROM ±.030 TO ±.060 CHD DIM A, PN -41 FROM 5-1/8 TO 5-11/32, PN -43 FROM 6-1/2 TO 6-17/32, DIM F, PN -40 THRU -43 FROM 2-5/8 TO 2-23/32 DGR	08-01-2014
05	ADDED REF. TO DIM E DGR	07-28-2014

CONFIDENTIAL

STANDARD TOLERANCE UNLESS OTHERWISE SPECIFIED

-FRACTIONAL ±1/32
-ANGULAR ±2°
-DECIMAL 2 Plc ±.03
3 Plc ±.010
-DIMENSIONS IN () REF. ONLY

NO REVISION TO DESIGN, MATERIAL, TOOLING, OR PROCESS IS ACCEPTABLE WITHOUT PRIOR APPROVAL FROM RHEEM THROUGH A REVISED ENGINEERING SPECIFICATION AND A RESAMPLING OF PARTS. THE SUPPLIER IS RESPONSIBLE FOR NOTIFYING RHEEM PARTS DIVISION IN WRITING OF ANY CHANGES AFFECTING PRODUCT QUALITY, PERFORMANCE, RELIABILITY, PACKAGING, DELIVERY OR WORKMANSHIP. ANY DOCUMENTS REFERRED TO ON THIS DRAWING ARE INCLUDED IN THE SPECIFICATIONS FOR THIS COMPONENT.

04	ADDED TOLERANCE TABLE. ADDED DIM D NOTE - SOCKET DEPTH, ADDED NOTE 10 DGR	07-25-2014
03	ADDED SANHUA FILTER DRIERS. ADDED NOTE SHT3, ADDED PACKAGING TYPE, REDRAWN IN PRO-E DGR	05-13-2014
02	REVISED TITLE BLOCK	10-31-2007

<p>Replacement Parts Division</p>	MODELED BY DGR 04-01-2014 APPROVED BY WCM 06-27-2014	NOTE: ALL BRAKES ARE 90° UNLESS OTHERWISE SPECIFIED	PART NO. SHEET 3 of 3 REV 83-25151-XX - 07
	<p>PROTECH FILTER DRIERS LIQUID LINE - UNI-FLOW</p>		