



# RKMA

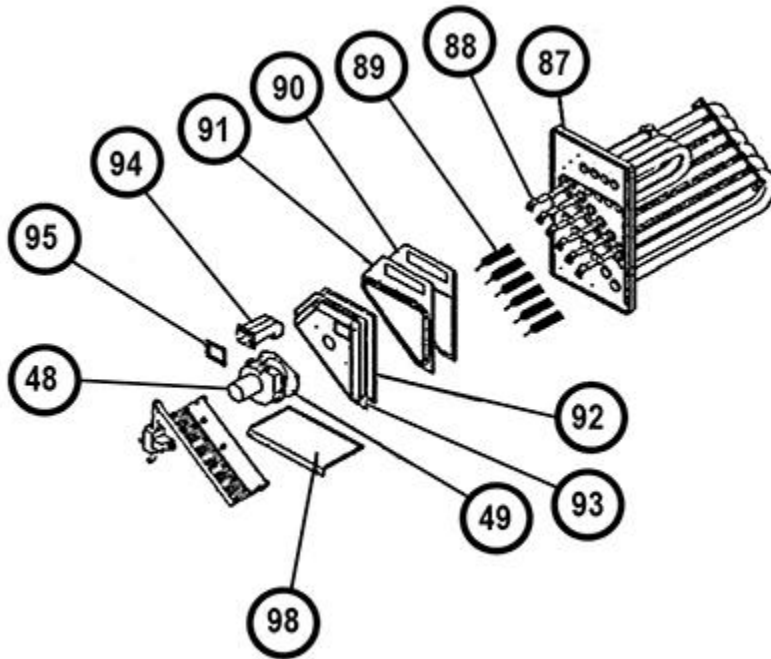
Parts List  
07-April-2015



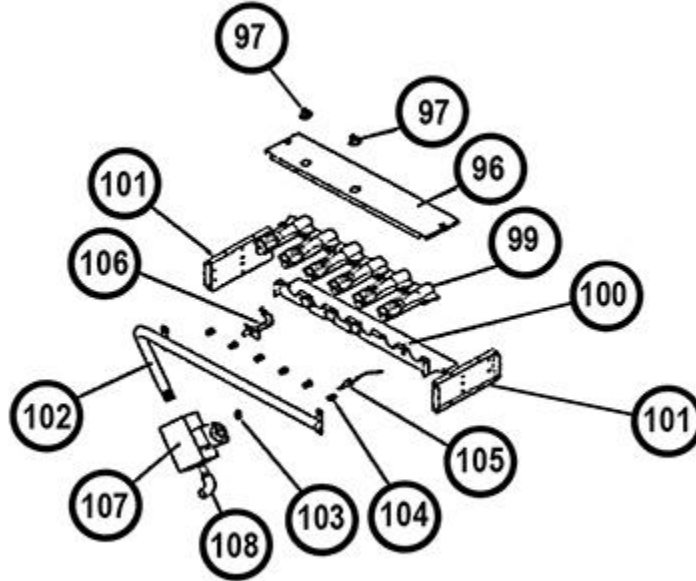
*This parts list is current as of the above revision date.  
See <http://www.rheempartslists.net/92-42800-RKMA.pdf> for the current revision.*

**Package Gas-Electric - Commercial**

No.	Notes	MODEL TECHNICAL VARIATION HEATING CAPACITY	RKMA- A 07	RKMA- A 08	RKMA- A 09	RKMA- A 10	RKMA- A 11	RKMA- A 12	RKMA- A 13
<b>HEAT EXCHANGER, BURNER / MANIFOLD</b>									
90	Stk	Divider Plate Gasket	68-23680-02	68-23680-02	68-23680-02	68-23680-02	68-23680-02	68-23680-02	68-23680-02
91		Divider Plate	AE-59067-01	AE-59067-01	AE-59067-01	AE-59067-01	AE-59067-01	AE-59067-01	AE-59067-01
92	Stk	Collector Box Gasket	68-23680-01	68-23680-01	68-23680-01	68-23680-01	68-23680-01	68-23680-01	68-23680-01
93		Collector Box Cover	AE-59068-04	AE-59068-01	AE-59068-02	AE-59068-02	AE-59068-05	AE-59068-06	AE-59068-03
94	Stk	Flue Duct	75-23678-01	75-23678-01	75-23678-01	75-23678-01	75-23678-01	75-23678-01	75-23678-01
95	Stk	Flue Duct Gasket	68-23680-03	68-23680-03	68-23680-03	68-23680-03	68-23680-03	68-23680-03	68-23680-03
96		Burner Shield	AE-58886-01	AE-58886-01	AE-58886-01	AE-58886-01	AE-58886-01	AE-58886-01	AE-58886-01
97	Stk, 1	Limit (Manual Reset) - Before Approximate Date Code F4708	47-22861-01 (1)	47-22861-01 (1)	47-22861-01 (2)	47-22861-01 (2)	47-22861-01 (2)	47-22861-01 (2)	47-22861-01 (2)
97	Stk, 1	Limit (Manual Reset) - After Approximate Date Code F4708 (See Note 1)	N/A	N/A	N/A	47-22861-02 (2)	N/A	N/A	47-22861-02 (2)
98		Burner Floor	AE-58932-02	AE-58932-02	AE-58932-02	AE-58932-02	AE-58932-02	AE-58932-02	AE-58932-02
99		Burner Tubes - Before F1396	Model was produced with burners not including shield. If replacing burner WITHOUT shield with current burner WITH shield, all older burners WITHOUT shield must be replaced.						
99	Stk	Burner With Shield - After F1396	75-22840-02 (4)	75-22840-02 (4)	75-22840-02 (5)	75-22840-02 (5)	75-22840-02 (6)	75-22840-02 (6)	75-22840-02 (6)
99	Stk, 1	Burner Assembly - After Approximate Date Code F4708 (See Note 1)	N/A	N/A	N/A	AS-60993-05	N/A	N/A	AS-60993-06
100	1	Burner Support - (Holds Burners between Supports Brackets) - Before Approximate Date Code F4708	AE-58887-02	AE-58887-02	AE-58887-02	AE-58887-02	AE-58887-02	AE-58887-02	AE-58887-02
100	1	Burner Support - (Holds Burners between Supports Brackets) - After Approximate Date Code F4708	N/A	N/A	N/A	AE-102650-01	N/A	N/A	AE-102650-01
101	1	Burner Support Bracket (2) - Before Approximate Date Code F4708	AE-61588-01	AE-61588-01	AE-61588-01	AE-61588-01	AE-61588-01	AE-61588-01	AE-61588-01
101	1	Burner Support Bracket (2) - After Approximate Date Code F4708	N/A	N/A	N/A	AE-61588-02	N/A	N/A	AE-61588-02
102	Stk	Manifold (w/o Orifices)	AS-59145-01	AS-59145-01	AS-59145-01	AS-59145-01	AS-59145-01	AS-59145-01	AS-59145-01
103	Stk	Square Head Plug (Used on Manifold to plug extra holes)	81-23593-01 (3)	81-23593-01 (3)	81-23593-01 (2)	81-23593-01 (2)	81-23593-01 (1)	81-23593-01 (1)	81-23593-01 (1)
104		Burner Orifice - Natural Gas:	See Orifice Selection Chart						
104		Burner Orifice - LP:	See Orifice Selection Chart						
104		Number of Orifices	(4)	(4)	(5)	(5)	(6)	(6)	(6)
105	Stk	Flame Sensor	62-23543-02	62-23543-02	62-23543-02	62-23543-02	62-23543-02	62-23543-02	62-23543-02
106	Stk	Ignition Electrode and Cable	62-23556-01	62-23556-01	62-23556-01	62-23556-01	62-23556-01	62-23556-01	62-23556-01



Heat Exchanger Assembly



In-Shot Burner Assembly - Before F4708