

### PRODUCT SPECIFICATIONS

Elkay Cane Apron for EHW Stainless Steel. Overall dimensions are 11-7/8" x 17-3/4" x 6-1/8". Made of Stainless Steel.

<b>Material:</b>	Stainless Steel
<b>Finish:</b>	Stainless Steel
<b>Dimensions:</b>	11-7/8" x 17-3/4" x 6-1/8"
<b>Shipping Weight:</b>	15 lbs.

**Special Note:** For use with EHW(M) models.

- Cane touch apron designed for use in specific bi-level applications when coolers or bottle fillers are installed on an exposed wall.
- For use with EHW(M) models.



**Included with Product: Cane apron assembly**

**AMERICAN PRIDE. A LIFETIME TRADITION.**  
Like your family, the Elkay family has values and traditions that endure. For almost a century, Elkay has been a family-owned and operated company, providing thousands of jobs that support our families and communities.



[Installation Instructions \(PDF\)](#)

PART: \_\_\_\_\_ QTY: \_\_\_\_\_

PROJECT: \_\_\_\_\_

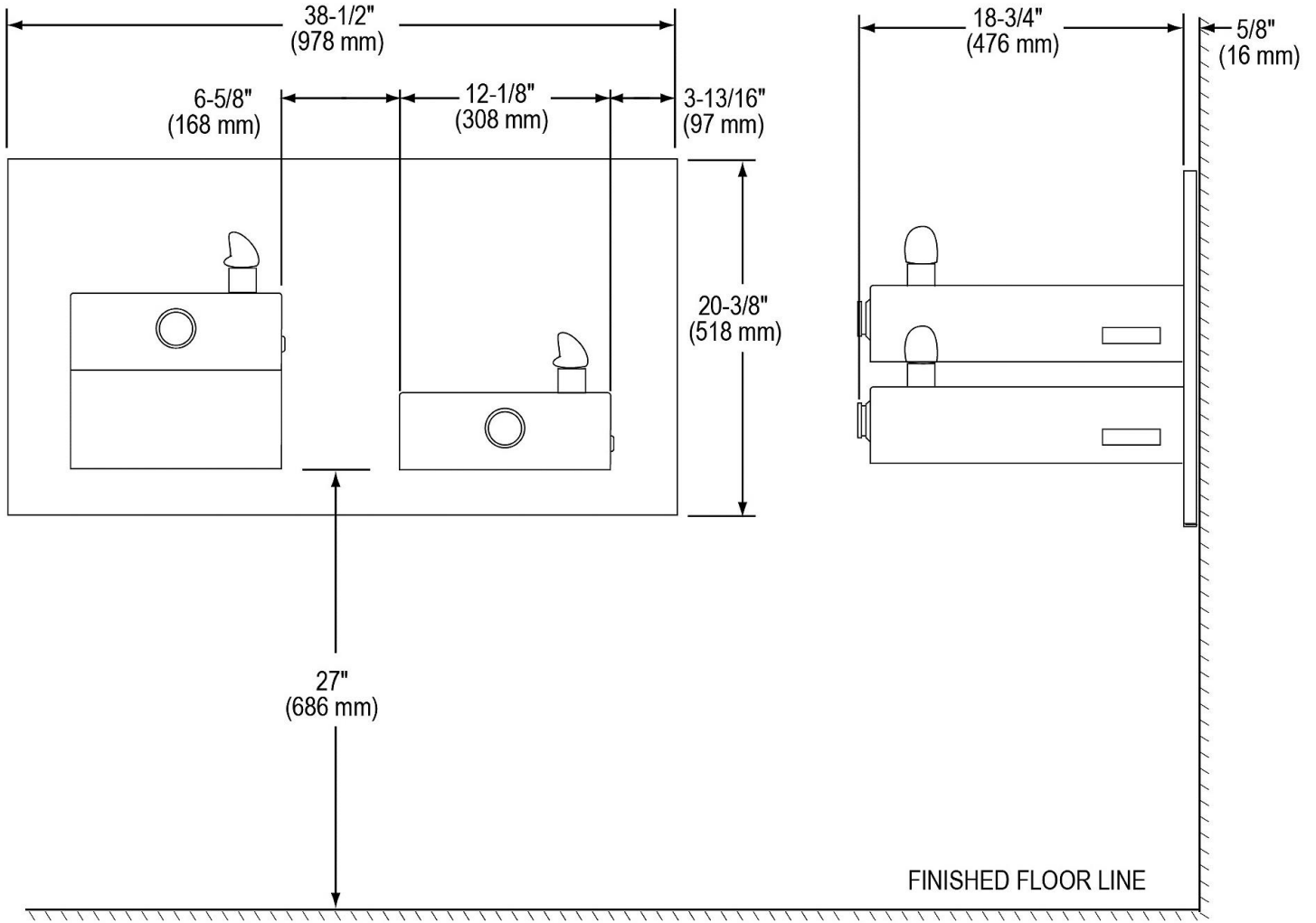
CONTACT: \_\_\_\_\_

DATE: \_\_\_\_\_

NOTES: \_\_\_\_\_

APPROVAL: \_\_\_\_\_

*In keeping with our policy of continuing product improvement, Elkay reserves the right to change product specifications without notice. Please visit [elkay.com](http://elkay.com) for the most current version of Elkay product specification sheets. This specification describes an Elkay product with design, quality, and functional benefits to the user. When making a comparison of other producers' offerings, be certain these features are not overlooked.*



\*A.D.A. Compliant (24" [610mm] for Child A.D.A.). Adjust other measurements accordingly

EHW17C shown with accessory apron LKAPR2 mounted.

*In keeping with our policy of continuing product improvement, Elkay reserves the right to change product specifications without notice. Please visit [elkay.com](http://elkay.com) for the most current version of Elkay product specification sheets. This specification describes an Elkay product with design, quality, and functional benefits to the user. When making a comparison of other producers' offerings, be certain these features are not overlooked.*