



General Duty Safety Switch

Type VBII, 100 Amp, 240 Volts, Type 3R (Outdoor)

Standards and Ratings

- UL Listed under file #E4776
- Meets UL98 for switches and UL 50 for enclosures
- Meets NEMA Standard KS-1 for enclosed switches
- Meets NEC wire bending space requirements • Rated 10,000 AIC with Class H fuses or 100,000 AIC with Class R fuses
- Suitable for use as service entrance equipment

Features

- Quick-make and break switching action
- Double break visible blade design
- Highly visible ON/OFF indication
- Rugged installer friendly enclosure design
- Modular design allows quick and easy replacement of parts
- Single cover interlock

General Information

Catalog Number	Description	Shipping Weight (lbs.)
GF223NR ¹	2 Pole, 3 Wire, Fusible	24
GF323NR	3 Pole, 4 Wire, Fusible	25
GNF323R	3 Pole, 3 Wire, Non-Fusible	24

Horsepower Ratings²

Catalog Number	1 Phase, 3 Wire, 240V AC		3 Phase, 3 Wire, 240V AC		250V DC
	Std	Max	Std	Max	
GF223NR	7½	15	15	30	20
GF323NR	7½	15	15	30	20
GNF323R	—	15	—	30	20

Accessories

Catalog Number	Description
HG61234	Equipment Ground Lug Kit
HN623	Neutral Kit
HR63	Class R Fuse Clip Kit (3 fuse clips per kit), (GF223NR, GF323NR)
HS125	1.25" Type "HS" Outdoor Hub
HS150	1.50" Type "HS" Outdoor Hub
HS200	2.00" Type "HS" Outdoor Hub

Replacement Parts

Catalog Number	Description
HFB63	Fusible Line Side Replacement Base (GF223NR, GF323NR)
HBB63	Fusible Load Side Replacement Base (GF223NR, GF323NR)
HNB623	Non-Fusible Replacement Base (GNF323R)
GH223	Replacement Handle/Handle Guard
HM6123	Replacement Mechanism
HL63	Replacement Lugs (3 lugs per kit)

Mechanical Lug Wire Ranges (60/75°C, Cu/Al)

Description	Wire Range
Line, Load	#12-1/0 AWG (Al) or
Neutral	#14-1/0 AWG (Cu)
Ground	#14-4 AWG

¹ These switches are UL Listed for application on grounded B phase systems.

² Dual horsepower ratings: Std - applies when non-time delay fuses are installed.
Max - applies when time-delay fuses are installed.

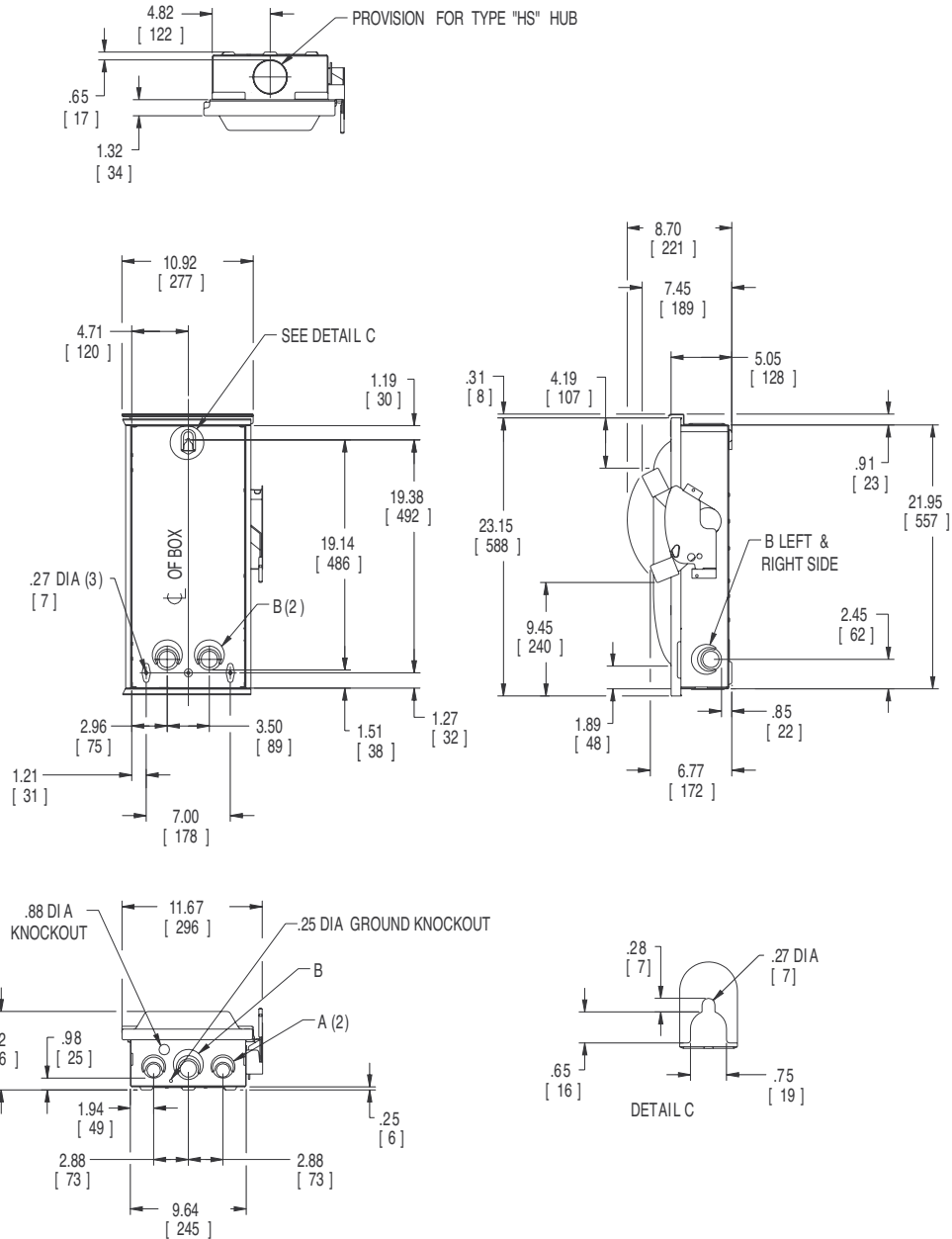
Product Specification Sheet GD100.2

Answers for industry.

SIEMENS

Product Specification Sheet #GD100.2 (page 2 of 2)

Dimension Drawing



Dimensions shown in inches and millimeters ().
Dimension shown accurate to ± 1/8 inch.

KNOCKOUT CODE	CONDUIT SIZE			
	.75	1.00	1.25	1.50
A (Tangential)	.75	1.00	1.25	1.50
B (Tangential)	1.00	1.25	1.50	2.00

	LINE SIDE WIRE BEND	LOAD SIDE WIRE BEND
	Fused	6.07 (154)
Non-Fused	6.07 (154)	11.46 (291)

Enclosure: Galvanized Steel
.054 Thick (17 Gauge)
Finish: ANSI Grey #61 Paint