

SANIFLO®

A Group SFA Company

The Intelligent Solution To Install A
Complete Bathroom Anywhere It's Needed





















MACERATING UNITS AND GRAY WATER PUMPS

THE COST EFFECTIVE SOLUTION



Saniflo products are designed and engineered to offer the flexibility of installing a complete bathroom, laundry room or kitchen without expensive structural changes or custom pumping equipment.

	PRODUCT	PART #	POSSIBLE CONNECTIONS	PAGE
EXTERNAL UNITS	SANIPLUS	002	   	6
	SANIBEST	013	     	7
	SANIGRIND	014	     	8
	SANIPACK	011	  	9
SELF-CONTAINED UNITS	SANICOMPACT	023		10
	SANISTAR	012		11
GRAY WATER PUMPS	SANIVITE	008	     	12
	SANISWIFT	021	    	13
	SANISHOWER	010	  	14

Operating Principle of the Saniflo System



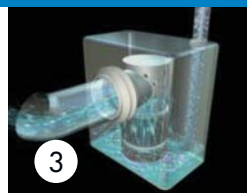
1

The toilet is flushed, the water level rises and the Saniflo grinder motor turns on automatically.



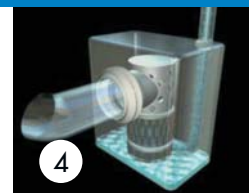
2

The blades driven by the motor grind the contents into tiny particles in 3 or 4 seconds.



3

The finely ground particles are pumped out through a standard pipe just 3/4 or 1 inch (20 or 25 mm) in diameter.



4

The macerating tank is now empty (apart from the water seal) and the system is ready for use again.

A HISTORY OF EXPERTISE

Established in Europe in 1958, Saniflo, with its innovative products, quickly outgrew the European market. In the late 1990's, during another period of rapid growth, Saniflo expanded product lines beyond the traditional washroom fixture market.

Saniflo's extraordinary success is tightly connected to the company's revolutionary macerator system. With its invention and introduction, the Saniflo macerator made it possible to install toilets and complete bathrooms anywhere in a house or an apartment. Whereas conventional plumbing places limitations on where a toilet or bathroom can be located, with Saniflo there are no such limitations. Saniflo products make renovations easy and affordable, because construction is greatly simplified. There are no walls to tear down or floors to rip up; therefore no costly construction is involved.

Saniflo Is The Only Intelligent Solution That Makes Installing A Bathroom Anywhere Possible!

Installing a bathroom where you want is often difficult and sometimes even impossible. The main drainpipe is either too far away, or the installation is lower than the drainpipe making conventional installation impossible.

Saniflo macerator units are able to grind and pump waste up a height of up to 18' and over a distance of up to 150'. The beauty of using Saniflo products is that a bathroom can be installed anywhere, in a short time, without major construction. Saniflo units are easy to install and a cost effective solution.

WHAT IS A MACERATOR?

To "macerate" is to soften and break in pieces. Our Saniflo macerating systems use a rotating cutting blade to liquefy human waste and toilet paper. When mixed with flushing water the waste is pumped into a sanitary sewer as a fine slurry.



WHAT IS A GRINDER?

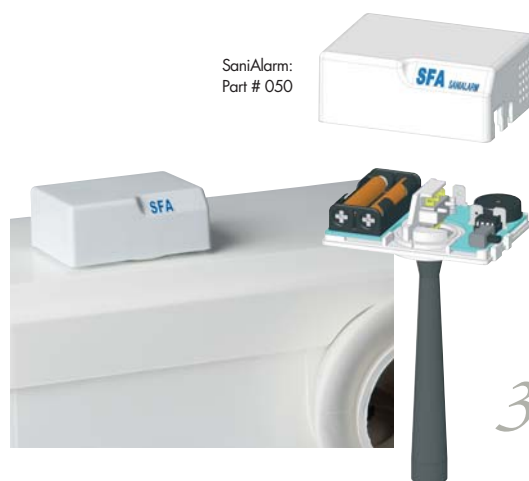
The grinder will accept accidental flushing of sanitary items such as feminine hygiene products. It grinds up waste produced in your home (i.e. toilet use, shower, washing machine, etc.) and pumps it into the public sewer system.



NEW Saniflo introduces the SaniAlarm!

The SaniAlarm has a level pressure switch that triggers an alarm fixed on the top of the unit if the volume of water exceeds the maximum allowed level. The alarm emits a continuous 80 dB warning sound until it is switched off or the problem is rectified. The SaniAlarm is battery operated and can be installed on most Saniflo macerating units and gray water pumps. It has been designed to be installed on new or existing Saniflo installations as it is quickly fitted onto the lid of the Saniflo unit. **Note:** Saniflo recommends using a SaniAlarm for a behind the wall installation.

**Not suitable for use with Sanicompact, Sanistar, Saniswift and Sanishower.*



WHY SHOULD YOU CHOOSE A **SANIFLO**[®] PRODUCT?

50 YEARS EXPERIENCE

With 50 years experience, Saniflo has positioned itself as a worldwide producer of macerating units and gray water pumps. Our research & development has become our number one priority allowing our experienced engineers to perfect the products of today and the future to offer you a more simplified and dependable quality product.



QUALITY

Our macerating units and gray water pumps meet all new standards in North America (ASME A112.3.4 and CSA B45.9) and internationally (EN 12050-3 and EN 12050-2) and our factories conform to ISO 9001 version 2000.

EASY INSTALLATION

Saniflo's macerating units and gray water pumps are the ideal solution for installing a new bathroom or fixture by simplifying construction without the long hours of labor. Saniflo makes it simple! We will counsel you on which product is best for you and direct you to a distributor in your area. Saniflo is the easy solution for all bathroom installations.

COMPLETE PRODUCT LINE

Saniflo produces a full line of macerating units and gray water pumps for an unlimited number of residential and commercial applications.

Our line of macerating units include external models, which can be placed either behind the toilet or inside the wall and self-contained models, which are toilets with the pump grinding system built into the toilet.

COST EFFECTIVE SOLUTION

Saniflo offers high quality, low cost and superior installation flexibility. Saniflo macerating systems are a very economical way to increase the value of any home with the addition of a toilet, complete bathroom or even a laundry room anywhere.

SERVICE

Saniflo has distributors throughout the United States and Canada along with service agents that can help answer any questions about installation or maintenance on your Saniflo product.

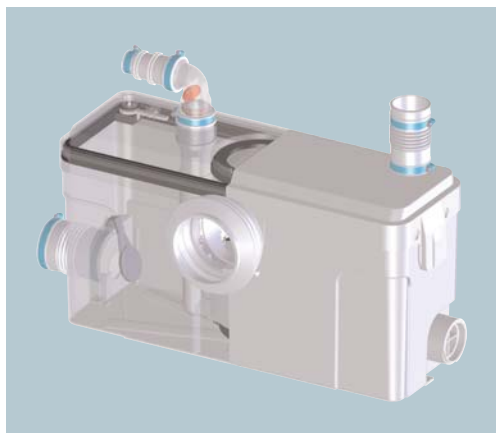
MAINTENANCE FREE

The motor of Saniflo's macerating units have no gears or brushes to wear out. It is filled with oil and sealed for life.

OTHERS REASONS

- More than 5,000,000 units sold worldwide
- Fully Certified and meets national codes
- International Plumbing Code Listed
- Uniform Plumbing Code Listed
- National Standard Plumbing Code Listed
- CSA Certified - CSA Listed
- International Association of Plumbing and Mechanical Code Listed
- Check valves are incorporated
- Handles feminine products (*SaniBest and SaniGrind*)
- From 9-18 feet pumping height
- Pumps vertically and horizontally
- Full range of models to suit your specific needs
- 2-Year Warranty

SANIPLUS®



The **SANIPLUS** can be used to install a complete bathroom. It offers a high level of styling that makes it the ideal centerpiece for a modern bathroom.

SPECIFICATIONS

Dimensions - H 10½" (27cm) x W 20" (51cm) x D 6¾" (17.5cm)

Dimensions include - Pump only

Motor - Induction

Power supply - 115 V - 60 Hz

Amperage - 7.2

HP - 0.4

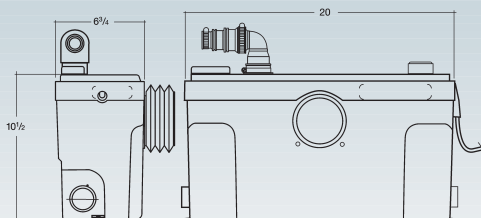
Discharge - Vertically to 15 ft. (4.6m) and Horizontally to 150 ft. (50M)

Discharge rate at 15' - 17 gal/min (66 liters)

Discharge rate at 3' - 27 gal/min (103 liters)

Discharge pipe diameter - 3/4"

Temperature - Maximum 104°F (40°C)



↑ 15 ft. / 150 ft. ↔



- Build a complete bathroom for residential applications
- Vertical pumping up to 15 ft. and 150 ft. away from a soil stack
- Designed to work with our rear discharge toilet that only uses 1.6 gallons (6 liters) of water per flush

Three rear discharge toilets are available to purchase with your **SANIPLUS** Macerating Unit.



White - Round
Toilet: Part # 003
Tank: Part # 005



Biscuit - Elongated*
Toilet: Part # 027
Tank: Part # 028
Note: Actual color may vary.



White - Elongated*
Toilet: Part # 007
Tank: Part # 005

*Elongated bowls are Americans with Disabilities Act (ADA) compliant.



Extension Pipe: Part # 030

A 16" extension pipe is available if installing the macerator unit behind a wall. When using the extension pipe, the toilet should be raised 3/8" for additional gravity flow toward the macerator box.



SANIBEST is ideal for situations where you do not control the use; such as a guest bathroom, rental unit or office building. It is designed to handle accidental flushing of sanitary items.

SPECIFICATIONS

Dimensions - H 10 $\frac{3}{4}$ " (27.5cm) x W 21" (53cm) x D 7" (17.5cm)

Dimensions include - Pump only

Motor - Induction

Power supply - 115 V - 60 Hz

Amperage - 9.0

HP - 0.8

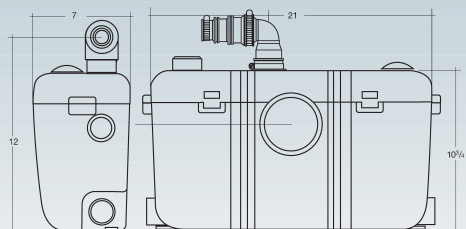
Discharge - Vertically to 18 ft. (6m) and Horizontally to 150 ft. (50M)

Discharge rate at 18' - 14 gal/min (53 liters)

Discharge rate at 3' - 27 gal/min (103 liters)

Discharge pipe diameter - 3/4"

Temperature - Maximum 104°F (40°C)



↑ 18 ft. / 150 ft. ↔



- Build a complete bathroom and more; for residential and commercial applications
- Vertical pumping up to 18 ft. and 150 ft. away from a soil stack
- Designed to work with our rear discharge toilet that only uses 1.6 gallons (6 liters) of water per flush

Three rear discharge toilets are available to purchase with your **SANIBEST** Grinding Unit.



White - Round
Toilet: Part # 003
Tank: Part # 005



Biscuit - Elongated*
Toilet: Part # 027
Tank: Part # 028



White - Elongated*
Toilet: Part # 007
Tank: Part # 005

Note: Actual color may vary.

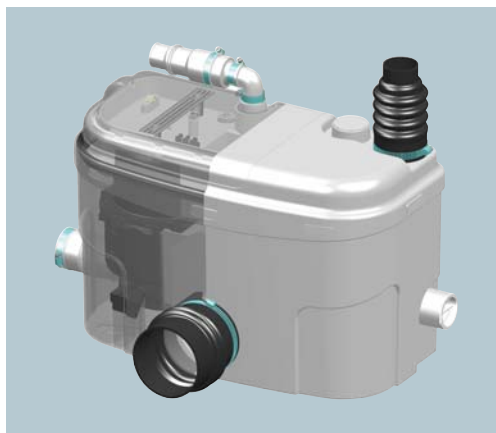
*Elongated bowls are Americans with Disabilities Act (ADA) compliant.



Extension Pipe: Part # 030

A 16" extension pipe is available if installing the macerator unit behind a wall. When using the extension pipe, the toilet should be raised 3/8" for additional gravity flow toward the macerator box.

SANIGRIND®



The **SANIGRIND** is a grinder unit only and is designed to work with a standard bottom outlet toilet.

SPECIFICATIONS

Dimensions - H 12" (30cm) x W 18" (46cm) x D 9" (23cm)

Dimensions include - Pump only

Motor - Induction

Power supply - 115 V - 60 Hz

Amperage - 9.0

HP - 0.8

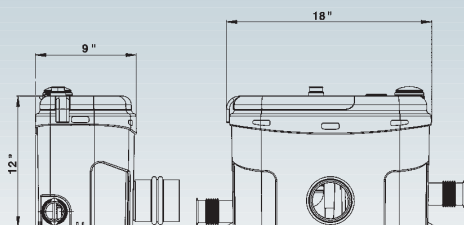
Discharge - Vertically to 18 ft. (6m) and Horizontally to 150 ft. (50m)

Discharge rate at 18' - 13 gal/min (48 liters)

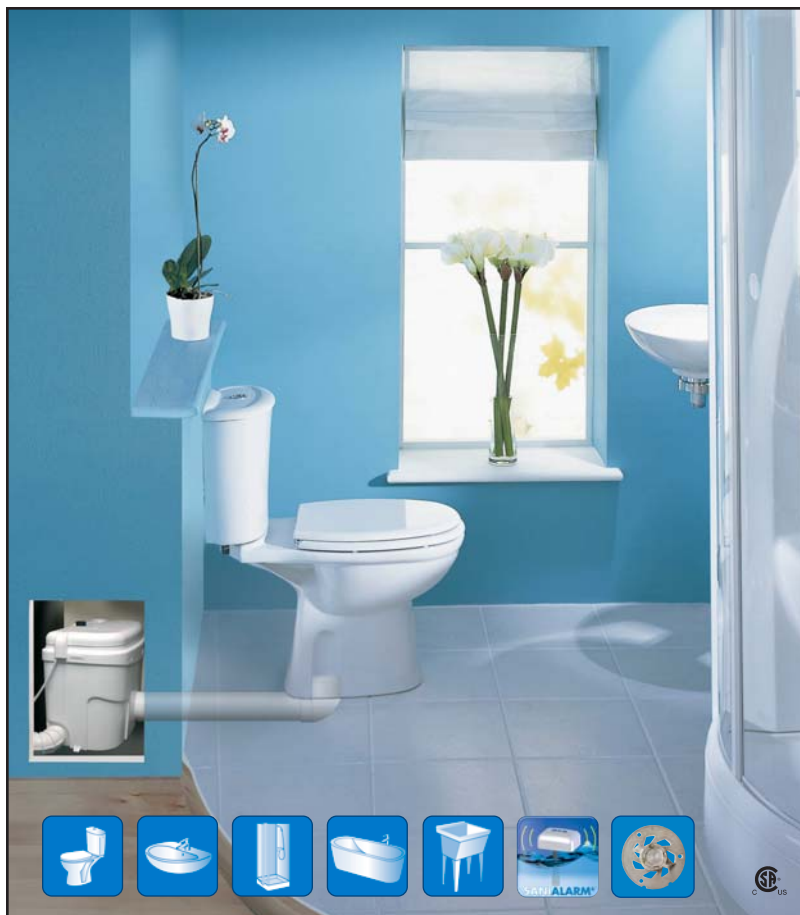
Discharge rate at 3' - 24 gal/min (90 liters)

Discharge pipe diameter - 3/4"

Temperature - Maximum 104°F (40°C)



↑ 18 ft. / 150 ft. ↔

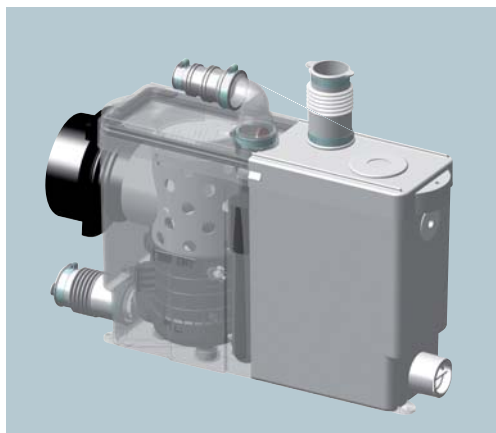


- Build a complete bathroom and more; for residential and commercial applications
- Vertical pumping up to 18 ft. and 150 ft. away from a soil stack
- Great for retrofitting applications. Designed to work with standard bottom outlet toilets not supplied by Saniflo
- Designed for heavy use, can occasionally accept disposal of sanitary items

PRODUCT DESCRIPTION

The beauty of the **SANIGRIND** is that it allows up to three connections, so you can install a complete bathroom. The **SANIGRIND** unit is installed on the floor, while the toilet, sink, and bath or shower must be installed on a raised platform.

The **SANIGRIND** can be installed in many locations such as a loft/attic, upper floor, ground floor, basement and even a garage. Whether you're finishing a basement, converting a garage or installing a bathroom in a master bedroom, **SANIGRIND** is the answer.



The depth of the **SANIPACK** enables the unit to be installed directly in the wall. This allows for easy installation of the fixtures with the Sanipack hidden and out of the way.

SPECIFICATIONS

Dimensions - H 11" (28cm) x
W 16 3/4" (42.5cm) x D 4 3/4" (12cm)

Dimensions include - Pump only

Motor - Induction

Power supply - 115 V - 60 Hz

Amperage - 5.4

HP - 0.4

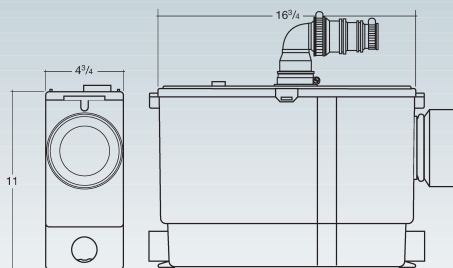
Discharge - Vertically to 9 ft. (3m) and
Horizontally to 100 ft. (33m)

Discharge rate at 9' - 13 gal/min
(48 liters)

Discharge rate at 3' - 17 gal/min
(66 liters)

Discharge pipe diameter - 3/4"

Temperature - Maximum 104°F (40°C)



↑ 9 ft. / 100 ft. ↔



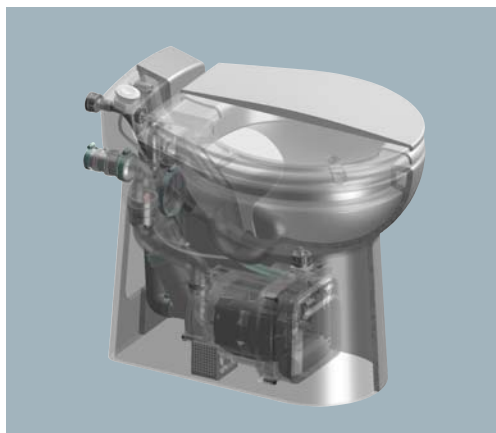
- Build a complete bathroom for residential applications
- Easy to conceal with versatile and quiet operation
- Vertical pumping up to 9 ft. and 100 ft. away from a soil stack
- Designed to work with wall-hung systems not supplied by Saniflo

PRODUCT DESCRIPTION

The **SANIPACK** is a unique product which allows you to install a wall hung toilet. It provides connections for both a sink and shower for an easy bathroom installation. The reservoir, macerating pump and pipes are hidden inside the wall. This type of installation gives you the lean and clean look of a European bathroom.

The **SANIPACK** can be installed in many locations such as a loft/attic, upper floor, ground floor, basement and even a garage.

SANICOMPACT®



The **SANICOMPACT** is a self-contained toilet that's ideal for fitting into tight spots where conventional toilets can't fit.

SPECIFICATIONS

Dimensions - H 15¾" (40cm) x W 14½" (37cm) x D 18¾" (46cm)

Dimensions include - Complete unit

Motor - Induction

Power supply - 115 V - 60 Hz

Amperage - 7.2

HP - 0.3

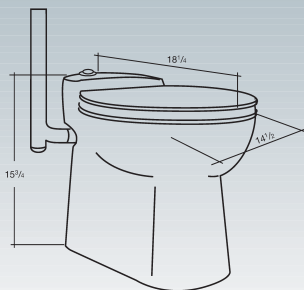
Discharge - Vertically to 9 ft. (3m) and Horizontally to 100 ft. (33m)

Discharge rate at 9' - 13 gal/min (49 liters)

Discharge rate at 3' - 16 gal/min (61 liters)

Discharge pipe diameter - 1"

Temperature - Maximum 95°F (35°C)

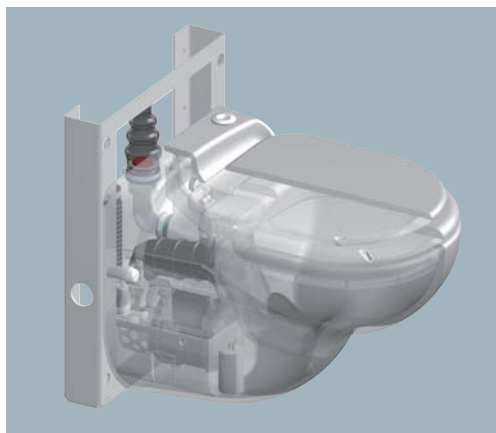


- Build a half bathroom for residential applications
- Vertical pumping up to 9 ft. and 100 ft. away from a soil stack
- **SANICOMPACT** allows the connection of a sink
- Compact toilet for small areas. Uses just 1 gallon (4 liters) of water per flush

PRODUCT DESCRIPTION

This modern shaped self-contained toilet is very water efficient, using just one gallon of water per flush. It was designed with several purposes in mind such as limited space, green conscious users that want to save water, and for people with physical limitations requiring easy access to a toilet.

The **SANICOMPACT** can be installed in many locations such as a loft/attic, upper floor, ground floor, basement and even a garage. The **SANICOMPACT** is very easy to install in areas such as under the stairway for a half bathroom or an additional half bathroom in a bedroom or garage conversion.



The **SANISTAR** is a wall-hung system offering a great image and a significantly improved level of hygiene. This unit operates silently and is easy to install.

SPECIFICATIONS

Dimensions - H 16 $\frac{3}{8}$ " (42cm) x W 15 $\frac{1}{4}$ " (40cm) x D 20 $\frac{1}{2}$ " (52cm)

Dimensions include - Complete unit

Motor - Induction

Power supply - 115 V - 60 Hz

Amperage - 9.0

HP - 0.4

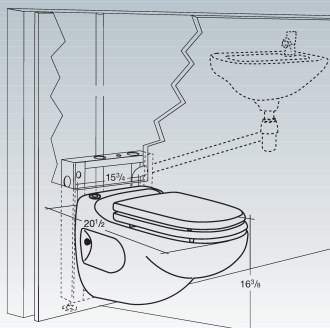
Discharge - Vertically to 9 ft. (3m) and Horizontally to 100 ft. (33m)

Discharge rate at 9' - 13 gal/min (48 liters)

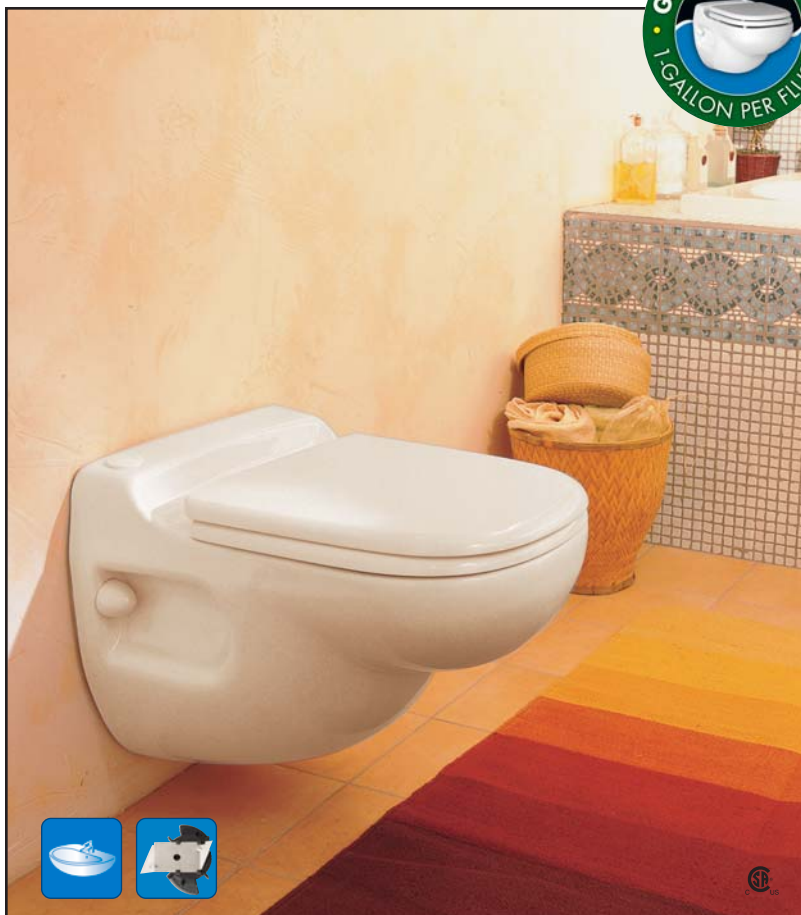
Discharge rate at 3' - 15 gal/min (58 liters)

Discharge pipe diameter - 1"

Temperature - Maximum 95°F (35°C)



↑ 9 ft. / 100 ft. ↔



- Build a half bathroom for residential applications
- Vertical pumping up to 9 ft. and 100 ft. away from a soil stack
- Wall mounted toilet with built in macerator/pump. (Includes the wall carrier for mounting) Gives a European style appearance
- Uses just 1 gallon (4 liters) of water per flush

PRODUCT DESCRIPTION

This modern shaped self-contained toilet is easy to install and is similar to the popular European wall-hung toilets. The **SANISTAR** saves space and can be hung on any sturdy wall. It comes complete with a wall bracket system that can be placed against a wall or if used in new construction, built into the wall. It can also be connected to a sink only. The **SANISTAR** is a green product that only uses one gallon of water per flush.

The **SANISTAR** can be installed in many locations such as a loft/attic, upper floor, ground floor, basement and even a garage.

SANIVITE®



The **SANIVITE** is the perfect quiet solution to install a kitchen or sink on the ground level or in the basement.

SPECIFICATIONS

Dimensions - H 10 $\frac{1}{8}$ " (26cm) x W 14 $\frac{1}{2}$ " (37cm) x D 7 $\frac{1}{4}$ " (18.5cm)

Dimensions include - Pump only

Motor - Induction

Power supply - 115 V - 60 Hz

Amperage - 7.2

HP - 0.4

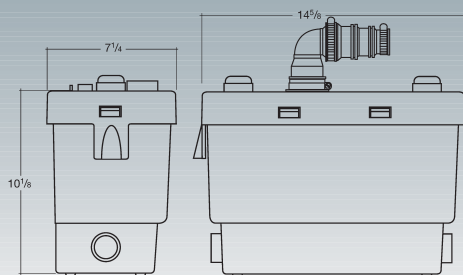
Discharge - Vertically to 16 ft. (5m) and Horizontally to 150 ft. (50m)

Discharge rate at 16' - 18 gal/min (68 liters)

Discharge rate at 3' - 29 gal/min (110 liters)

Discharge pipe diameter - 1"

Temperature - Maximum 140°F (60°C)



- Discharges 18 gallons per minute
- Vertical pumping up to 16 ft. and 150 ft. away from a soil stack
- Small enough to fit inside a kitchen cabinet with the capability to handle hot water. Ideal for heavy-duty applications
- Multiple inlets for various hook ups

PRODUCT DESCRIPTION

The **SANIVITE** is a gray water pump ideally suitable for use in small foot print kitchen. It is small enough to fit comfortably inside a kitchen cabinet or vanity. It will pump waste water away from a variety of sources, such as a kitchen sink, laundry sink even a dishwasher or washing machine (indirect via a laundry tub only).

The **SANIVITE** can be installed in many locations such as a loft/attic, upper floor, ground floor, basement and even a garage. Whether you're remodeling a kitchen, installing a sink in the basement or building a covered outdoor kitchen, **SANIVITE** will get the job done.

SANISWIFT®



Saniswift's modern style prevails over other bulky relics. With unprecedented performance and features, this pump is unmatched in its class. The **SANISWIFT** can handle multiple fixtures to solve the most difficult installations. Saniswift sets the standard for the ultimate gray water pump.

SPECIFICATIONS

Dimensions - H 8¾" (22cm) x W 10¼" (26cm) x D 9" (23cm)

Dimensions include - Pump only

Motor - Induction

Power supply - 115 V - 60 Hz

Amperage - 5.9

HP - 0.3

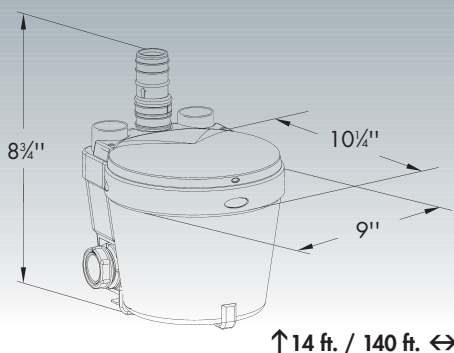
Discharge - Vertically to 14 ft. (4.3m) and Horizontally to 140 ft. (43m)

Discharge rate at 14' - 18 gal/min (70 liters)

Discharge rate at 3' - 24 gal/min (89 liters)

Discharge pipe diameter - 1"

Temperature - Maximum 140°F (60°C)



- Discharges 18 gallons per minute
- Vertical pumping up to 14 ft. and 140 ft. away from a soil stack
- Powerful and economical pump. Ideal for mid-ranged applications
- Multiple inlets for various hook ups

PRODUCT DESCRIPTION

The **SANISWIFT** is powerful unit with a compact design. It offers three inlets for various hook ups such as a washing machine, sink or even a shower.

The **SANISWIFT** can be installed in many locations such as a loft/attic, upper floor, ground floor, and even a basement. The compact design makes it perfect for installations in a basement, laundry room, or even a converted garage.

SANISHOWER®



The **SANISHOWER** allows you to install a shower where you never thought possible. Gives you a fast and easy way to add an additional sink or shower to your home.

SPECIFICATIONS

Dimensions - H 5¼" (15cm) x W 11½" (29.5cm) x D 6⅝" (16cm)

Dimensions include - Pump only

Motor - Induction

Power supply - 115 V - 60 Hz

Amperage - 5.5

HP - 0.2

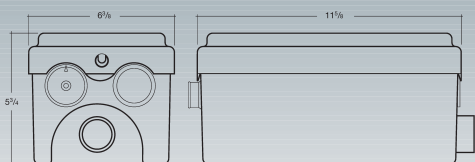
Discharge - Vertically to 12 ft. (3.7m) and Horizontally to 100 ft. (33m)

Discharge rate at 12' - 14 gal/min (50 liters)

Discharge rate at 3' - 20 gal/min (77 liters)

Discharge pipe diameter - 3/4"

Temperature - Maximum 104°F (40°C)



- Discharges 14 gallons per minute
- Vertical pumping up to 12 ft. and 100 ft. away from a soil stack
- Easy to install and small enough to fit under the shower base. Ideal for light-duty applications

PRODUCT DESCRIPTION

The **SANISHOWER** is a small gray water pump that may be used to pump waste water away from a shower or sink. The **SANISHOWER** is small enough to fit inside a wet bar cabinet, or even beside or underneath a raised shower base. It has two inlets for hooking up a shower or sink and it will pump up to 12 feet high.

The **SANISHOWER** can be installed in many locations such as a loft/attic, upper floor, ground floor, basement and even a converted garage. This product is ideal for installing a shower and/or sink in a bedroom or basement or even under a bar sink.

FAQ's - MACERATING TOILETS AND GRAY WATER PUMPS

What is a macerator?

To "macerate" is to soften, to break in pieces. Our macerating systems use a rotating cutting blade to liquefy human waste and toilet paper. When mixed with flushing water the waste is pumped into a sanitary sewer as a fine slurry.

Where can I use macerating systems?

These systems can be used anywhere extra sanitary facilities are needed or wanted. Extra bathrooms can be installed in basements, cottages, hotels, motels, etc.

Is Saniflo expensive?

The greatly reduced labor costs and the incredible flexibility makes Saniflo an economical and viable alternative when gravity flow systems cannot be installed.

Can I also install a shower or bathtub?

When installing a bathtub a platform of 2 x 8 inch is needed to allow for the installation of a P-Trap and pipe with some gravity flow towards the macerating unit.

Do I need to break up the floor to install the macerating system?

No, Saniflo can easily be installed on top of any finished floor, which totally eliminates the need to dig up a floor as present methods using a sump and sewage ejector pump requires. Additionally, there is no need to leave an accessible space, as is the case with an in-floor sump system.

Where is the waste discharged?

The waste is pumped into a sewer system, septic tank or holding tank by means of a proper waste pipe system that complies with applicable codes.

Can I discharge the waste by means of upward slopes?

The best method to install a discharge pipe is to rise vertically at the unit as high as necessary and from that point slope down at a fall of 1/4 inch per linear foot to the point of discharge.

Can a washing machine be discharged into the Saniplus?

Our Sanibest, Sanivite and Saniswift units are designed for this type of application. The washing machine must be drained into a laundry tub or sink first if using any of these units.

Can I discharge a kitchen sink into a macerating system?

No, the greases and larger food particles associated with kitchen sinks would clog the smaller diameter pipe and create a problem eventually. The Sanivite is designed for this purpose.

Do I need to install a P-Trap in vanities, bathtubs, and showers?

Yes, even though macerating systems have built-in mechanical traps most plumbing codes require a regular P-Trap to be installed. It is also necessary to prevent odors and sewer gases from escaping into the room.

Will I void the warranty, if I install the system myself?

No, but since this is an unusual system and proper building, plumbing and electrical codes must be followed. We suggest that the system is installed by a trade person.

Can the warranty be voided?

Yes, when any foreign objects are found in the macerating unit that has to be retrieved by a plumbing or service person. Also, by pouring automotive anti-freeze, solvents, paints, etc., into the system, or by opening the motor of the macerating unit.

Do macerating systems, gray water pumps and fixtures need to be vented?

All macerator and gray water pumps have been designed with a vent connection on the lid. All plumbing codes require connection to a vent system. Please note that the vent system should be a two-way air vent. The use of mechanical vents, air admittance valves or similar devices are not permitted as these are considered one-way vent systems. The Sanicompact and Sanistar units are "forced mains" and they do not need to be vented.

How much water does the system use?

All models in the Saniflo line are low consumption type water closets. The Saniplus/Sanibest uses 1.6 gallons (6 litres) of water per flush and Sanicompact uses 1 gallon (4 litres) water per flush. This compares very favorably with older style water closets that may use up to 3.5 gallons (30 litres) of water per flush.

What is the discharge capacity?

Depending upon the discharge installation the Saniplus/Sanibest can pump up to 11 gallons per minute and the Sanivite can pump up to 18 gallons per minute. The Sanicompact cannot pump more than 1 gallon (4 litres) at a time as it is an electrically timed system.

Can I use lake water to flush the toilet?

Yes, provided that a particle filter is fitted in the supply line before it enters the water closet. The Sanicompact uses a solenoid valve and if a particle gets stuck between the valve and the body, leakage may occur.

How long will macerating systems last?

A national recognized laboratory tested the Saniplus system for 50,000 cycles, e.g. flushed 10 x a day = 3650 x a year = 13.69 years lifetime. As this is a standard test, it was stopped after 50,000 cycles; therefore the Saniplus may last much longer.

Are there colors available?

We have two colors for our bowls and tanks; the standard white color and biscuit.

Should I winterize the system?

When installed in areas that are prone to freezing, all parts need to be properly drained, e.g. the macerating unit, the discharge piping, the tank, the supply pipe etc. Alternatively, a jug of plumbers anti freeze may be poured into the system until the macerating systems start up.

Does the system need maintenance?

No, the motor is filled with oil and sealed for life.

Where can we purchase parts?

Parts can be purchased through the Technical Department. Please call our toll free number 1-800-571-8191. If in Canada, please call 1-800-363-5874.

What warranty is provided by Saniflo?

The pump units have a 2-year warranty while the porcelain (toilet bowl and tank) have a 1-year warranty.

What is the normal operation of the pump units?

The pump operation varies depending on the usage. If water is flowing at a continuous rate into the pump, it will cycle several times as it is trying to empty out the constant flow.

Does Saniflo offer other toilet designs?

We offer toilets with elongated bowls for greater comfort. Some of our toilets are also ADA compliant and measure 16 3/4 inches in height.

THE SANIFLO LINE

MACERATING TOILET SYSTEMS

Application	EXTERNAL UNITS				SELF-CONTAINED UNITS		GRAY WATER PUMPS		
	SANIPLUS	SANIBEST	SANIGRIND	SANIPACK	SANICOMPACT	SANISTAR	SANIVITE	SANISWIFT	SANISHOWER
 Toilet	✓	✓	✓	✓	✓	✓			
 Sink	✓	✓	✓	✓	✓	✓	✓	✓	✓
 Bathtub	✓	✓	✓				✓		
 Shower	✓	✓	✓	✓			✓	✓	✓
 Washing Machine*		✓	✓				✓	✓	
 Dishwasher							✓	✓	
 Laundry Sink		✓	✓				✓	✓	
 Bar Sink							✓	✓	✓
Loft/Attic	 <p>ALL UNITS CAN BE USED IN ANY OF THESE SITUATIONS: LOFT/ATTIC - UPPER FLOOR - GROUND FLOOR - BASEMENT - GARAGE</p>								
Upper Floor									
Ground Floor									
Basement									
Garage									
Distance-Up	15' (4.6m)	18' (6m)	18' (6m)	9' (3m)	9' (3m)	9' (3m)	16' (5m)	14' (4.3m)	12' (3.7m)
Distance-long	150' (50m)	150' (50m)	150' (50m)	100' (33m)	100' (33m)	100' (33m)	150' (50m)	140' (43m)	100' (33m)
Discharge Pipe Size	3/4" (20mm)	3/4" (20mm)	3/4" (20mm)	3/4" (20mm)	1" (25mm)	1" (25mm)	1" (25mm)	1" (25mm)	3/4" (20mm)
Max. Temperature	104°F (40°C)	104°F (40°C)	104°F (40°C)	104°F (40°C)	95°F (35°C)	95°F (35°C)	140°F (60°C)	140°F (60°C)	104°F (40°C)

CSA Certified

ALL OUR PRODUCTS ARE CSA CERTIFIED

* Indirect only

SANIFLO®
A Group SFA Company

U.S. - 105 Newfield Avenue, Suite B, Edison, NJ 08837

Toll Free: 1-800-571-8191

www.saniflo.com

Canada - 1 - 685 Speedvale Avenue West, Guelph, ON N1K 1E6

Toll Free: 1-800-363-5874

www.saniflo.ca