



JAY R. SMITH MFG. CO.
DIVISION OF SMITH INDUSTRIES, INC.
POST OFFICE BOX 3237
MONTGOMERY, ALABAMA 36109-0237 (USA)
TEL: 334-277-8520 FAX: 334-272-7396 www.jrsmith.com



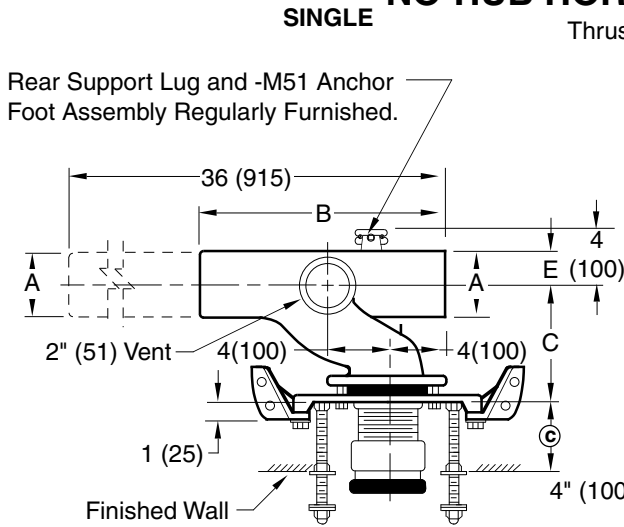
MEMBER OF:



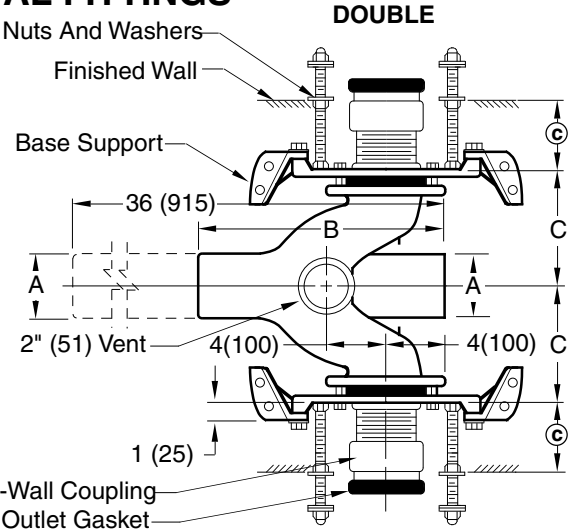
LOCATION

ADJUSTABLE FIXTURE SUPPORTS FOR SIPHON JET WATER CLOSETS SHALLOW ROUGH-IN TYPE

NO-HUB HORIZONTAL FITTINGS



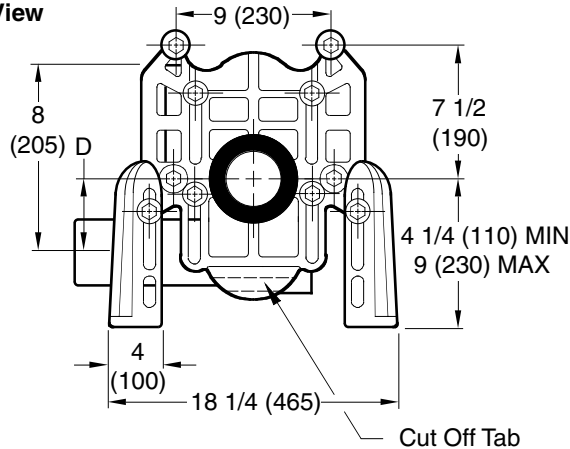
**Fig. 0210RY
Top View**



**Fig. 0210DY
Top View**

NOTE: Base support must be securely anchored to floor (with four 1/2" (13) bolts provided by contractor).

NOTE: Dimensions shown in parentheses are in millimeters.



Front View

The water closet gasket regularly furnished is made of molded neoprene and designed to fit water closet outlet dimensions and configurations shown in ANSI Standard A112.19.2M-1995, Figure 13B. If gasket is not found to be compatible to fixture due to nonconformance of said fixture to ANSI A112.19.2M, then fixture manufacturer shall be consulted for a suitable gasket recommendation. Jay R. Smith assumes no liability for connections to fixtures which do not conform to these standards.

- ☐ Fig. 0210LY... NO-HUB Left Hand
- ☐ Fig. 0210RY... NO-HUB Right Hand
- ☐ Fig. 0210DY... NO-HUB Double
- ☐ Fig. 0220LY... NO-HUB Left Hand Long Barrel
- ☐ Fig. 0220RY... NO-HUB Right Hand Long Barrel
- ☐ Fig. 0220DY... NO-HUB Double Long Barrel

A SIZE	B	C	D		E
			MIN	MAX	
4 (100)	14 (355)	7 (180)	5/8 (16)	3 3/8 (86)	2 1/4 (57)
5 (125)	15 5/8 (397)	9 (230)	5/8 (16)	3 3/8 (86)	2 3/4 (70)




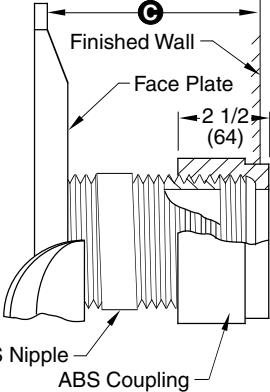
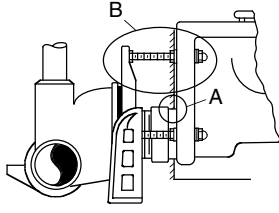
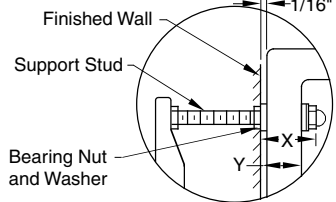
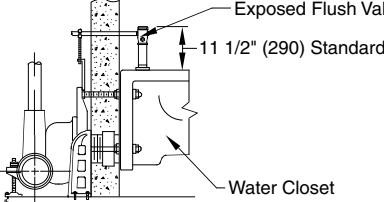
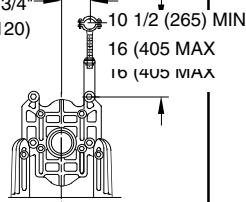
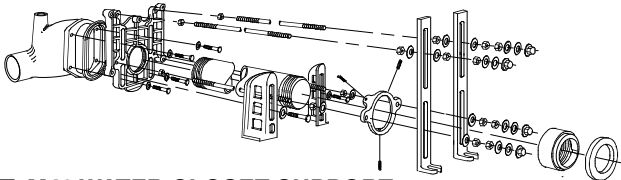
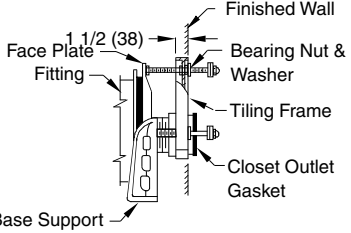
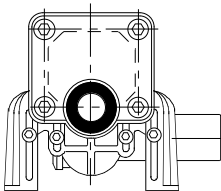
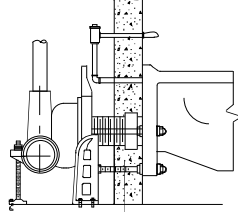
© dimension = 4" (100) (regularly furnished) consisting of nipple and Adjus-to-Wall coupling permitting adjustment from 3" (76) min. to 4" (100) max.

J H G F	10/09/99 7-1-98 1-23-98 6-1-94	Deleted Note Submittal Update Chg'd Callout Added Millimeters	JJ ASL EMB EMB	BS BS BS BS
REV.	DATE	DESCRIPTION	BY	CKD. BY

WEIGHT POUNDS	VOLUME CUBIC FEET	FIGURE NUMBER 0210Y,0220Y
------------------	----------------------	-------------------------------------

DRAWING NUMBER: 0210Y,0220Y
SIZE: A
SCALE: NONE
DATE: 2-28-86
APPROVED BY: CR
CHECKED BY: CR
DRAWN BY: CM
FIGURE NUMBER: 0210Y,0220Y

WE CAN ASSUME NO RESPONSIBILITY FOR USE OF SUPERSEDED OR VOID DATA
DIMENSIONS ARE SUBJECT TO MANUFACTURERS TOLERANCE AND CHANGE WITHOUT NOTICE

C	DRAWING NUMBER S0200BS	SIZE A	SCALE: NONE	DATE: 2-28-86	APPROVED BY: JD	CHECKED BY: CR	DRAWN BY: VGD	0200/0300 Series Back Sheet	DIMENSIONS ARE SUBJECT TO MANUFACTURERS TOLERANCE AND CHANGE WITHOUT NOTICE	<div>SMITH® JAY R. SMITH MFG. CO.® DIVISION OF SMITH INDUSTRIES, INC. POST OFFICE BOX 3237 MONTGOMERY, ALABAMA 36109-0237 (USA) TEL: 334-277-8520 FAX: 334-272-7396 www.jrsmith.com</div> <div>  </div> <div>LOCATION</div>																																									
										<div>MODIFICATIONS & VARIATIONS</div>																																									
										<div><div><div><div><div>Ⓢ DIMENSION - ADJUS-TO-WALL TYPE OUTLET CONNECTION</div><div>The Smith Adjus-to-Wall outlet connection provides adjustment at the face of the wall at the time the fixture is set; thus, compensating for wall construction variations. The Ⓢ dimension is measured from the front of the face plate to the finished wall. To properly determine the length of nipple required, deduct 1" (25) from the Ⓢ dimension. When the Ⓢ dimension exceeds 7" (180), the -M40 Wide Pipe Chase Support is recommended. The Adjus-to-Wall coupling will provide 1/2" (13) horizontal adjustment in either direction with the coupling extended 5/16" (8) past face of the finished wall.</div><div><div>Ⓢ dimension = 4" (100) (regularly furnished) consisting of nipple and adjus-to-wall coupling permitting adjustment from 3" (76) min. to 4" (100) max.</div><div>*ABS (Regularly Furnished) other length PVC.</div></div></div></div><div></div><div><div>NIPPLE LENGTHS AVAILABLE</div><table><thead><tr><th>LENGTH</th><th>MIN</th><th>Ⓢ</th><th>MAX</th></tr></thead><tbody><tr><td>2 1/2 (64)</td><td>2 1/4 (57)</td><td>3 1/4 (83)</td><td></td></tr><tr><td>*3 1/4 (83)</td><td>3 (76)</td><td>4 (100)</td><td></td></tr><tr><td>*8 1/4 (210)</td><td>8 (205)</td><td>9 (230)</td><td></td></tr><tr><td>10 (255)</td><td>9 3/4 (250)</td><td>10 3/4 (275)</td><td></td></tr><tr><td>12 (305)</td><td>11 3/4 (300)</td><td>12 3/4 (325)</td><td></td></tr><tr><td>15 (380)</td><td>14 3/4 (376)</td><td>15 3/4 (400)</td><td></td></tr><tr><td>18 (455)</td><td>17 3/4 (450)</td><td>18 3/4 (475)</td><td></td></tr></tbody></table><div>NOTE: When nipple lengths between 3 1/4" (83) and 8 1/4" (210) are specified, the 8 1/4" (210) nipple will be supplied. Nipple must be cut to specified length by others.</div></div></div></div>										LENGTH	MIN	Ⓢ	MAX	2 1/2 (64)	2 1/4 (57)	3 1/4 (83)		*3 1/4 (83)	3 (76)	4 (100)		*8 1/4 (210)	8 (205)	9 (230)		10 (255)	9 3/4 (250)	10 3/4 (275)		12 (305)	11 3/4 (300)	12 3/4 (325)		15 (380)	14 3/4 (376)	15 3/4 (400)		18 (455)	17 3/4 (450)	18 3/4 (475)	
										LENGTH	MIN	Ⓢ	MAX																																						
										2 1/2 (64)	2 1/4 (57)	3 1/4 (83)																																							
*3 1/4 (83)	3 (76)	4 (100)																																																	
*8 1/4 (210)	8 (205)	9 (230)																																																	
10 (255)	9 3/4 (250)	10 3/4 (275)																																																	
12 (305)	11 3/4 (300)	12 3/4 (325)																																																	
15 (380)	14 3/4 (376)	15 3/4 (400)																																																	
18 (455)	17 3/4 (450)	18 3/4 (475)																																																	
<div><div>RECOMMENDED SETTING OF CLOSET OUTLET CONNECTION AND FIXTURE STUDS</div><div>Manufacturers have slight differences in the depth of the closet horn and flange thickness of their closets. Usually the fixture support closet connection should extend 5/16" (8) beyond face of finished wall (Dimension "R") and the fixture studs 2 1/4" (57) (Dimension "X"). For exact dimensions please use the formulas below.</div><div><div><div>DETAIL A Formula for "R" is: S + 1/16" (2) - D = R. S = Depth of closet horn 1/16" (2) = Distance closet is to set away from finished wall. D = 1/2" (13) for felt gasket and 3/8" (10) for neoprene gasket. R = Distance coupling should extend beyond finished wall. NOTE: When the fixture is installed, closet gasket must be compressed sufficiently to assure a gas and water-tight seal.</div><div></div><div>DETAIL A</div></div><div><div>DETAIL B Formula for "X" is: Y + 1/16" (2) + 9/16" (14) = X. Y = Thickness of closet wall flange. 1/16" (2) = Distance closet is to set away from finished wall. X = Distance supporting stud should extend beyond finished wall. NOTE: Bearing nuts and washers must be set to take full loading from the fixture allowing 1/16" (2) clearance between fixture and wall.</div><div></div><div>DETAIL B</div></div></div></div>																																																			
<div><div><div><div></div><div>Exposed Flush Valve</div><div>11 1/2" (290) Standard</div><div>Water Closet</div></div><div><div></div><div>4 3/4" (120)</div><div>10 1/2 (265) MIN</div><div>16 (405) MAX</div><div>10 (405) MAX</div></div></div><div>Provides support and alignment for the supply pipe to an exposed flush valve; must be specified for either 1" (25) copper tube or 1" (25) iron pipe.</div><div><input type="checkbox"/> SUFFIX -M12 EXPOSED FLUSH VALVE SUPPLY SUPPORT</div><div></div><div><input type="checkbox"/> -M40 WATER CLOSET SUPPORT FOR WIDE PIPE CHASE (USE WHEN Ⓢ DIMENSION EXCEEDS 7" (180))</div></div>																																																			
<div><div><div><div><div></div><div>Finished Wall</div><div>1 1/2 (38)</div><div>Face Plate</div><div>Bearing Nut & Washer</div><div>Fitting</div><div>Tiling Frame</div><div>Closet Outlet Gasket</div><div>Base Support</div></div><div></div></div><div><input type="checkbox"/> SUFFIX -M13 TILING FRAME - POLYSTYRENE</div><div><div>CONCEALED FLUSH VALVES</div><div>A concealed flush valve when used with a blowout water closet support will not clear the face plate. Therefore 4 1/2" (115) to 6 1/2" (165) is required from back of wall to face plate to permit the installation of the concealed flush valve piping.</div><div></div></div></div></div>																																																			
FIGURE NUMBER	C B A	12-10-03 6-1-95 7-1-93	Revised Notes Added Millimeters Submittal Update	RN EMB EMB	CL BS BS	WEIGHT POUNDS	VOLUME CUBIC FEET	FIGURE NUMBER 0200/0300 Series Back Sheet																																											
REV.	DATE	DESCRIPTION		BY	CKD. BY																																														