



GUARDIAN
FIRE EQUIPMENT, INC.

6200 Series Free-Standing Fire Dept. Inlet Connections

Function

- Used as auxiliary connections through which the fire department can pump water to supplement existing water supplies
- Provides 250 GPM flow (minimum), per 2 1/2" inlet

Features/Components

- **Single** inlet connections incorporate a straight-thru, non-clappered design with female NPT outlets
- **Two and three-way** inlet connections feature brass bodies with integral drop-clapper inlets and female NPT outlets
- **Four-way square** and **four-way in-line** inlet connections feature brass bodies with female NPT inlets and outlets
- **Six-way** inlet connections feature steel bodies with female NPT inlets and outlets
- **Standard components, all connections:**
Female hose thread swivel inlets (**models 6242/6264** with clapper-snoots), plugs with chains, 18" cover sleeve (**model 6202** with tube), and identification plate
- Cast brass construction*, standard

*Optional brass finishes, add suffix to model no.

-B Polished; -C Rough Chrome Plated; -D Polished Chrome Plated

Single, Two, Three, Four, and Six-way Connections

Model No.	Size	Clappers	Overall Height	Radius of Body Swing
6202	1 1/2" x 1 1/2"	---	20"	4"
6214	2 1/2" x 2 1/2"	---	20"	4"
6224	4" x 2 1/2" x 2 1/2"	2	24"	6 3/4"
6226	6" x 2 1/2" x 2 1/2"	2	24"	7 1/4"
6234	4" x 2 1/2" x 2 1/2" x 2 1/2"	3	24"	7"
6236	6" x 2 1/2" x 2 1/2" x 2 1/2"	3	24"	7"
6242	6" x 2 1/2" square, 4-way	4	34"	7 1/2"
6244	6" x 2 1/2" in-line, 4-way	4	24"	12 1/2"
6264*	8" x 2 1/2" in-line, 6-way	6	26 1/2"	19"

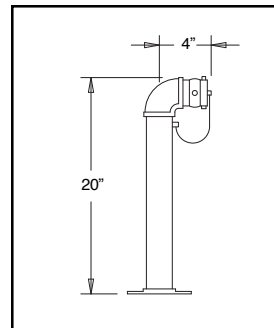
Identification Plate Lettering:

- AUTO SPKR
- STANDPIPE
- AUTO SPKR & STANDPIPE
- DRY STANDPIPE

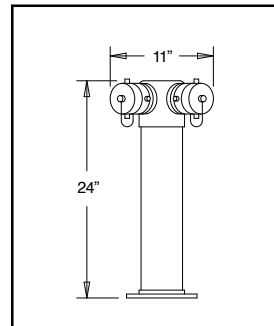
* Steel body painted black for cast brass & polished brass finish
Steel body painted silver for rough chrome & polished chrome

Notes

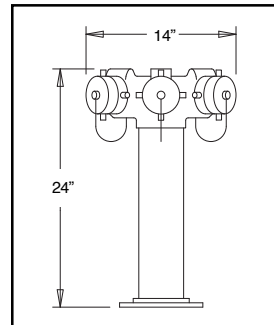
- Always specify hose threads and identification plate lettering
- Contact factory for current UL listing/FM approvals and special requirements



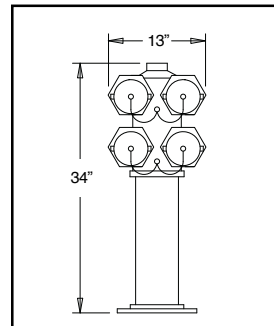
6202/6214



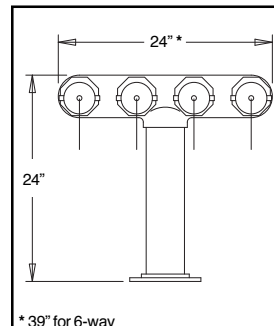
6224/6226



6234/6236



6242



* 39" for 6-way



6244/6264