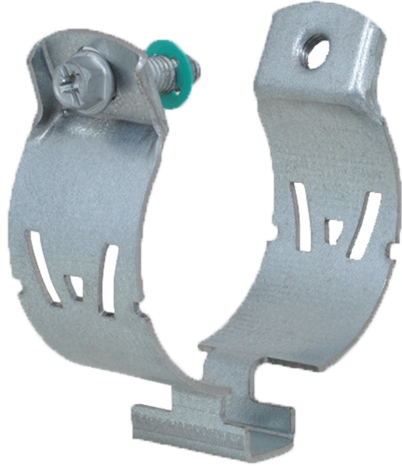


W1000 Strut Clamp

(H 32 215)

to be used with steel pipes and EMT conduit 18 - 60 mm



Features and benefits

- the new alternative to the standard Strut Clamp
- 3-way use, on strut, on threaded rod, directly on wall or ceiling
- one-piece design - no loose parts
- easier, faster, safer - installs with one hand
- 3-way screw head - Phillips, flat and hex
- unique design allows one clamp to fit multiple pipe sizes - less items to stock
- W Series Clamps are boxed for easy handling - no more bags
- material: steel 1.0242
- surface treatment: high grade Zn-Mg based coating (600 hours salt spray)
- Test Reports:
 - Strength:2017-TR15XXXX-VX

Part No.	D (mm)	D / IPS (")	D / EMT (")	s (mm)	Screw	Fa,z (lbs)	Pack 1
201 5 021	18 - 21	1/2	1/2	1.25	1/4"	200	50
201 5 027	23 - 27	3/4	3/4	1.25	1/4"	200	50
201 5 033	29 - 33	1	1	1.25	1/4"	220	25
201 5 042	38 - 42	1-1/4	1-1/4	1.25	1/4"	220	25
201 5 048	44 - 48	1-1/2	1-1/2	1.50	1/4"	400	25
201 5 060	56 - 60	2	2	1.50	1/4"	400	25

For additional testing information, please contact our Sales Office!

