



Anti-Siphon Wall Faucets

Model 24/B24/Y24

The Model 24 and B24 are anti-siphon, vacuum breaker protected wall faucets designed for irrigation purposes in mild climate areas. The Model B24 is enclosed in a flush mounted wall box. Both models are designed to blend with modern architecture for installation on or in homes, service stations, churches, motels, drive-in restaurants, etc. The Model Y24 is designed to be used on a stand pipe in the lawn and garden, etc.

SPECIFICATIONS:

VACUUM BREAKER - ANTI-SIPHON:

- NIDEL® Model 34HF with 3/4 inch male hose thread
- ASSE Standard 1011 approved
- IAPMO® listed
- Canadian Standards Association

EPDM PACKING: Prevents leaking.

PACKING NUT: Adjustable brass nut with deep stem guard.

VALVE SEAT: Standard "O" size washer.

HANDLES: Furnished with polycarbonate wheel handle and loose tee key.

Optional: Metal wheel handle.

INLETS: Model 24 as shown below.
Model B24: 24P- 1/2 or 24P 3/4 only.
Model Y24: 3/4 " FPT.

MAX PRESSURE: 125 p.s.i.

MAX TEMPERATURE: 120° F

SHIPPING WEIGHT: (per unit)

MODEL 24 & Y24: 1 lb

MODEL B24: 13 lbs (brass or chrome box)
6 lbs (aluminum box)



MODEL 24

Exterior Finish:

Standard - Chrome (CH)

Optional- Rough Brass (BR) or Polished Chrome (PC)



MODEL B24

Exterior Finish:

Standard - Chrome (CH)

Optional- Rough Brass (BR) or Polished Brass (PB)

Other Options: Anodized Aluminum Box (AL)



MODEL Y24

Exterior Finish:

Standard - Chrome (CH)

Optional- Rough Brass (BR) or Polished Chrome (PC)

Inlet Descriptions

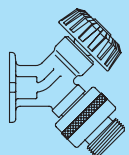
MODEL 24/B24

P-1/2 Inlet

1/2" FPT

P-3/4 Inlet

3/4" FPT



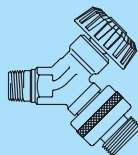
MODEL 24 ONLY

CP Inlet

COMBINATION

1/2" COPPER TUBE

1/2" MPT



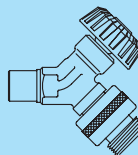
MODEL 24 ONLY

C Inlet

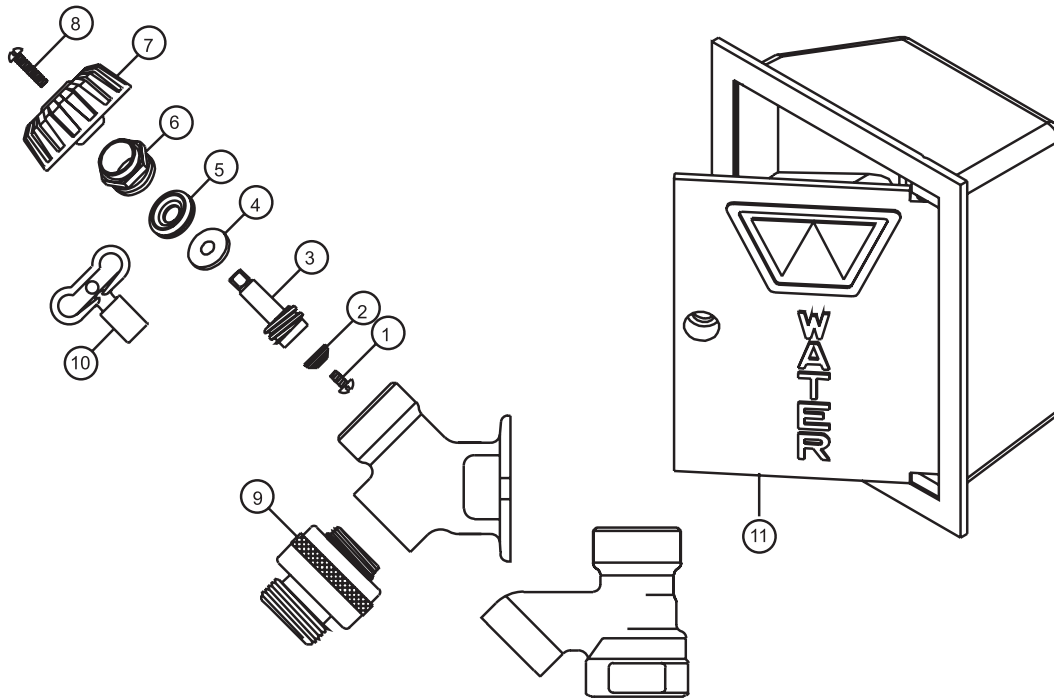
COMBINATION

1/2" COPPER TUBE

3/4" COPPER TUBE



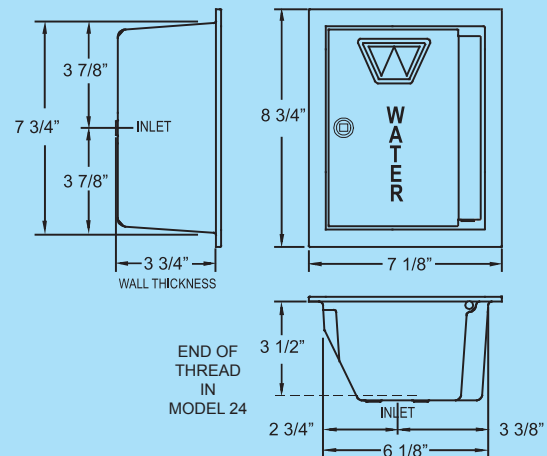
**For Installation / Troubleshooting Instructions go to
www.woodfordmfg.com or call 1-800-621-6032**

WOODFORD

MODEL 24/B24/Y24 PARTS LIST

ITEM	PART#	DESCRIPTION
1	30009	Washer Screw
2	30008	Washer
3	30104	Operating Stem
4	30105	Packing Support Washer
5	30247	EPDM Packing
6	30109	Packing Nut - Chrome
7	30120	Wheel Handle - Clear
	30233	Wheel Handle - Tan
8	30121	Handle Screw - Nickel
	30002	Handle Screw - Brass
9	34HF-CH	34HF Vacuum Breaker - Chrome
	34HF-BR	34HF Vacuum Breaker - Brass
10	50009	Tee Key
11	B24BX	Box/Door Assembly - Chrome
	B24BX-BR	Box/Door Assembly - Brass
	B24BX-PB	Box/Door Assembly - Polished Brass
	B24BX-AL	Box/Door Assembly - Anodized Aluminum
	RK-24	Chrome Repair Kit (Includes items 1-8)
	RK-H34	Brass Repair Kit (Includes items 1-8)

MODEL B24 Rough-In Dimensions



Manufactured under one or more of the following patents: U.S. Patents: 3,414,001; 3,543,786; 4,178,956; 4,316,481; D216,790; D216,791; D277,365; D277,366; Canada Patents: 822,458; 852,529; 865,995

For more information contact...

WOODFORD MANUFACTURING COMPANY

2121 Waynoka Road, Colorado Springs, Colorado 80915 • Phone: (800) 621-6032 • Fax: (800) 765-4115

To view our complete product line visit: www.woodfordmfg.com or email: sales@woodfordmfg.com

A Division Of WCM Industries, Inc.