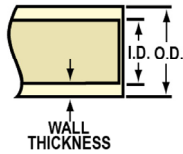




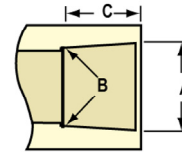
CTS CPVC Technical CTS Product Dimensions

CPVC 41, SDR 11 PIPE DIMENSIONS (CTS) ASTM D 2846, D 2846M



| Nominal Pipe Size In. | Mean Outside Diameter In. | O.D. Tolerance In. | Minimum Wall Thickness In. |
|-----------------------|---------------------------|--------------------|----------------------------|
| 1/2 | 0.625 | ±0.003 | 0.068 |
| 3/4 | 0.875 | ±0.003 | 0.080 |
| 1 | 1.125 | ±0.003 | 0.102 |
| 1-1/4 | 1.375 | ±0.003 | 0.125 |
| 1-1/2 | 1.625 | ±0.004 | 0.148 |
| 2 | 2.125 | ±0.004 | 0.193 |

CPVC 41, SDR 11 SOCKET DIMENSIONS (CTS) ASTM D 2846, D 2846M



| Nominal Size In. | Diameter | | | Socket Length Minimum C |
|------------------|------------|----------|---------------|-------------------------|
| | Entrance A | Bottom B | Tolerance In. | |
| 1/2 | 0.633 | 0.619 | ±0.003 | 0.500 |
| 3/4 | 0.884 | 0.870 | ±0.003 | 0.700 |
| 1 | 1.1345 | 1.121 | ±0.003 | 0.900 |
| 1-1/4 | 1.386 | 1.372 | ±0.003 | 1.100 |
| 1-1/2 | 1.640 | 1.622 | ±0.004 | 1.300 |
| 2 | 2.141 | 2.123 | ±0.004 | 1.700 |

Injection Molded Dimension References:

G = (LAYING LENGTH) intersection of center lines to bottom of socket/thread; 90° elbows, tees, crosses; ± 1/32 inch.

H = Intersection of center lines to face of fitting; 90° elbows, tees, crosses; ± 1/32 inch.

J = Intersection of center lines to bottom of socket/thread; 45° elbows; ± 1/32 inch.

L = Overall length of fittings; ± 1/16 inch.

M = Outside diameter of socket/thread hub; ± 1/16 inch.

N = Socket bottom to socket bottom; couplings; ± 1/16 inch.

W = Height of cap; ± 1/16 inch.

| COPPER TUBE SIZE (CTS) CPVC PIPE | | | | | | |
|----------------------------------|----------|----------|-----------|-----------------|---------|---------------|
| Nominal Pipe Size In. | AVG. O.D | AVG. I.D | MIN. Wall | MAX. W.P. P.S.I | LBS./FT | Lgths./Carton |
| 1/2 | Entrance | 0.469 | 0.068 | 400 | .090 | 50 |
| 3/4 | 0.875 | 0.695 | 0.080 | 400 | .149 | 25 |
| 1 | 1.125 | 0.901 | 0.102 | 400 | .353 | 10 |
| 1-1/4 | 1.375 | 1.105 | 0.125 | 400 | .353 | 10 |
| 1-1/2 | 1.625 | 1.309 | 0.148 | 400 | .489 | 6 |
| 2 | 2.125 | 1.716 | 0.193 | 400 | .829 | 4 |

Standard Length- 10 Feet · All pipe is packed in boxes sold in carton quantities only.
Pipe has UL 94 V-O rating · For water, non shock, at 73.4°F with solvent welded joints.

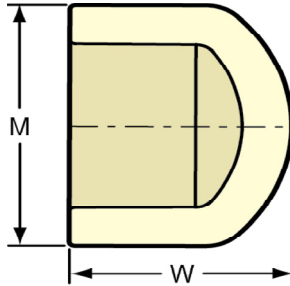


CTS CPVC Technical
CTS Product Dimensions



Cap

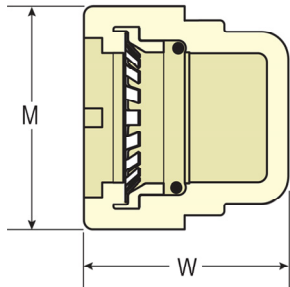
Socket
 NSF® Certified Lead Free



| Part Number | Size | M | W | Approx. Wt. (Lbs.) |
|-------------|-------|---------|---------|--------------------|
| 4147-005 | 1/2 | 27/32 | 25/32 | .00 |
| 4147-007 | 3/4 | 1- 1/16 | 1- 3/32 | .01 |
| 4147-010 | 1 | 1- 3/8 | 1- 9/32 | .03 |
| 4147-012 | 1-1/4 | 1-21/32 | 1-19/32 | .06 |
| 4147-015 | 1-1/2 | 1-31/32 | 1-29/32 | .10 |
| 4147-020 | 2 | 2- 9/16 | 2-13/32 | .22 |

GripLoc™ Cap

WARNING: DO NOT INSERT FINGERS
 Grip Socket - Uses No Solvent Cement
 NSF® Certified Lead Free

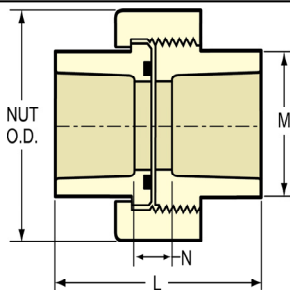


| Part Number | Size | M | W | Approx. Wt. (Lbs.) |
|-------------|------|--------|---------|--------------------|
| GL4147-005 | 1/2 | 1-7/32 | 1-5/16 | .04 |
| GL4147-007 | 3/4 | 1-1/2 | 1-13/32 | .06 |
| GL4147-010 | 1 | 2 | 1-3/4 | .12 |

Note: The GripLoc™ is water tight, permanent and cannot be removed.

Union

Socket with EPDM O-ring Seal
 100 psi Maximum Internal Pressure @ 180°F
 (82°C) - NSF® Certified Lead Free



| Part Number | Size | L | M | N | NUT O.D. | Approx. Wt. (Lbs.) |
|-------------|-------|---------|---------|---------|----------|--------------------|
| 4197-005 | 1/2 | 2- 3/16 | 1- 1/32 | 1- 5/32 | 1-25/32 | .05 |
| 4197-007 | 3/4 | 1- 3/4 | 1- 3/32 | 5/16 | 1-23/32 | .07 |
| 4197-010 | 1 | 2-13/32 | 1-17/32 | 9/16 | 2- 1/2 | .27 |
| 4197-012 | 1-1/4 | 2-21/32 | 1-11/16 | 7/16 | 2-5/8 | .25 |
| 4197-015 | 1-1/2 | 2-15/16 | 2-1/16 | 11/32 | 3-3/16 | .41 |
| 4197-020 | 2 | 3-31/32 | 2-9/16 | 1/2 | 3-19/32 | .57 |