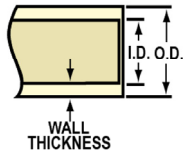




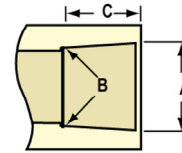
CTS CPVC Technical CTS Product Dimensions

CPVC 41, SDR 11 PIPE DIMENSIONS (CTS) ASTM D 2846, D 2846M



Nominal Pipe Size In.	Mean Outside Diameter In.	O.D. Tolerance In.	Minimum Wall Thickness In.
1/2	0.625	±0.003	0.068
3/4	0.875	±0.003	0.080
1	1.125	±0.003	0.102
1-1/4	1.375	±0.003	0.125
1-1/2	1.625	±0.004	0.148
2	2.125	±0.004	0.193

CPVC 41, SDR 11 SOCKET DIMENSIONS (CTS) ASTM D 2846, D 2846M



Nominal Size In.	Diameter			Socket Length Minimum C
	Entrance A	Bottom B	Tolerance In.	
1/2	0.633	0.619	±0.003	0.500
3/4	0.884	0.870	±0.003	0.700
1	1.1345	1.121	±0.003	0.900
1-1/4	1.386	1.372	±0.003	1.100
1-1/2	1.640	1.622	±0.004	1.300
2	2.141	2.123	±0.004	1.700

Injection Molded Dimension References:

G = (LAYING LENGTH) intersection of center lines to bottom of socket/thread; 90° elbows, tees, crosses; ± 1/32 inch.

H = Intersection of center lines to face of fitting; 90° elbows, tees, crosses; ± 1/32 inch.

J = Intersection of center lines to bottom of socket/thread; 45° elbows; ± 1/32 inch.

L = Overall length of fittings; ± 1/16 inch.

M = Outside diameter of socket/thread hub; ± 1/16 inch.

N = Socket bottom to socket bottom; couplings; ± 1/16 inch.

W = Height of cap; ± 1/16 inch.

COPPER TUBE SIZE (CTS) CPVC PIPE

Nominal Pipe Size In.	AVG. O.D	AVG. I.D	MIN. Wall	MAX. W.P. P.S.I	LBS./FT	Lgths./Carton
1/2	Entrance	0.469	0.068	400	.090	50
3/4	0.875	0.695	0.080	400	.149	25
1	1.125	0.901	0.102	400	.353	10
1-1/4	1.375	1.105	0.125	400	.353	10
1-1/2	1.625	1.309	0.148	400	.489	6
2	2.125	1.716	0.193	400	.829	4

Standard Length- 10 Feet · All pipe is packed in boxes sold in carton quantities only.
Pipe has UL 94 V-O rating · For water, non shock, at 73.4°F with solvent welded joints.

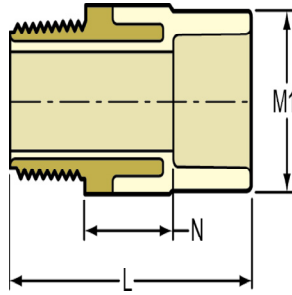


CTS CPVC Technical
CTS Product Dimensions



Male Adapter - Transition with CPVC Lined Brass Thread

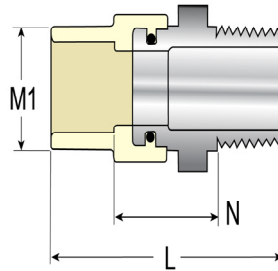
Brass Mipt x Socket
 NSF® Certified Lead Free



Part Number	Size	L	M1	N	Approx. Wt. (Lbs.)
4136-005BR	1/2	2	27/32	25/32	.14
4136-007BR	3/4	2- 1/4	1- 3/16	27/32	.21
4136-010BR	1	2-11/16	1- 3/8	29/32	.37
4136-012BR	1-1/4	2-31/32	1-21/32	31/32	.61
4136-015BR	1-1/2	3- 3/16	1-15/16	1- 1/32	.74
4136-020BR	2	3-21/32	2-17/32	31/32	1.03

Male Adapter - Transition with Stainless Steel Thread

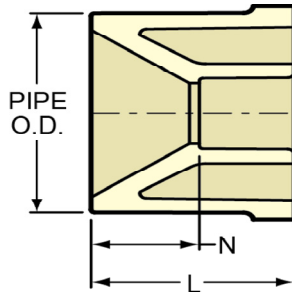
Socket x SS Mipt
 NSF® Certified Lead Free



Part Number	Size	L	M1	N	Approx. Wt. (Lbs.)
4136-005SS	1/2	2-1/32	7/8	13/32	.04
4136-007SS	3/4	2-5/16	1-1/8	29/32	.18
4136-010SS	1	2-27/32	1-3/8	1	.31
4136-012SS	1-1/4	3-9/32	1-11/16	1-9/32	.58
4136-015SS	1-1/2	3-17/32	2	1-9/32	1.38
4136-020SS	2	3-31/32	2-19/32	1-3/8	1.08

Reducer Bushing

Spigot x Socket
 NSF® Certified Lead Free



Part Number	Size	L	N	Pipe O.D.	Approx. Wt. (Lbs.)
4137-101	3/4X1/2	27/32	1/8	7/8	.01
4137-130	1X1/2	1- 1/8	19/32	1-1/8	.03
4137-131	1X3/4	1- 1/16	11/32	1-1/8	.02
4137-166	1-1/4X1/2	1-13/32	7/8	1-3/8	.06
4137-167	1-1/4X3/4	1- 3/8	21/32	1-3/8	.06
4137-168	1-1/4X1	1- 5/16	3/8	1-3/8	.04