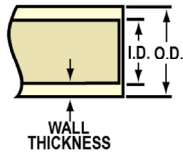




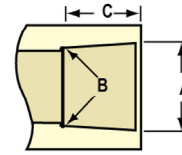
CTS CPVC Technical CTS Product Dimensions

CPVC 41, SDR 11 PIPE DIMENSIONS (CTS) ASTM D 2846, D 2846M



Nominal Pipe Size In.	Mean Outside Diameter In.	O.D. Tolerance In.	Minimum Wall Thickness In.
1/2	0.625	±0.003	0.068
3/4	0.875	±0.003	0.080
1	1.125	±0.003	0.102
1-1/4	1.375	±0.003	0.125
1-1/2	1.625	±0.004	0.148
2	2.125	±0.004	0.193

CPVC 41, SDR 11 SOCKET DIMENSIONS (CTS) ASTM D 2846, D 2846M



Nominal Size In.	Diameter			Socket Length Minimum C
	Entrance A	Bottom B	Tolerance In.	
1/2	0.633	0.619	±0.003	0.500
3/4	0.884	0.870	±0.003	0.700
1	1.1345	1.121	±0.003	0.900
1-1/4	1.386	1.372	±0.003	1.100
1-1/2	1.640	1.622	±0.004	1.300
2	2.141	2.123	±0.004	1.700

Injection Molded Dimension References:

G = (LAYING LENGTH) intersection of center lines to bottom of socket/thread; 90° elbows, tees, crosses; ± 1/32 inch.

H = Intersection of center lines to face of fitting; 90° elbows, tees, crosses; ± 1/32 inch.

J = Intersection of center lines to bottom of socket/thread; 45° elbows; ± 1/32 inch.

L = Overall length of fittings; ± 1/16 inch.

M = Outside diameter of socket/thread hub; ± 1/16 inch.

N = Socket bottom to socket bottom; couplings; ± 1/16 inch.

W = Height of cap; ± 1/16 inch.

COPPER TUBE SIZE (CTS) CPVC PIPE

Nominal Pipe Size In.	AVG. O.D	AVG. I.D	MIN. Wall	MAX. W.P. P.S.I	LBS./FT	Lgths./Carton
1/2	Entrance	0.469	0.068	400	.090	50
3/4	0.875	0.695	0.080	400	.149	25
1	1.125	0.901	0.102	400	.353	10
1-1/4	1.375	1.105	0.125	400	.353	10
1-1/2	1.625	1.309	0.148	400	.489	6
2	2.125	1.716	0.193	400	.829	4

Standard Length- 10 Feet · All pipe is packed in boxes sold in carton quantities only.
Pipe has UL 94 V-O rating · For water, non shock, at 73.4°F with solvent welded joints.

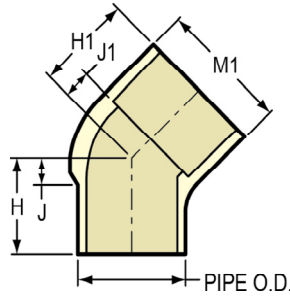




CTS CPVC Technical
CTS Product Dimensions

45° Street Ell

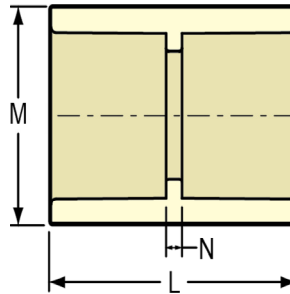
Spigot x Socket
 NSF® Certified Lead Free



Part Number	Size	H	H1	J	J1	M1	Approx. Wt. (Lbs.)
4127-005	1/2	3/4	23/32	7/32	7/32	27/32	.01
4127-007	3/4	1	1	9/32	9/32	1- 3/32	.03
4127-010	1	1- 5/16	1-1/4	3/8	11/32	1- 3/8	.05

Coupling

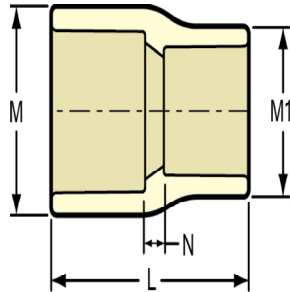
Socket x Socket
 NSF® Certified Lead Free



Part Number	Size	L	M	N	Approx. Wt. (Lbs.)
4129-005	1/2	1- 5/32	27/32	1/8	.01
4129-007	3/4	1- 9/16	1- 1/16	1/8	.02
4129-010	1	1-15/16	1- 3/8	1/8	.04
4129-012	1-1/4	2- 3/8	1-21/32	3/32	.08
4129-015	1-1/2	2- 3/4	1-31/32	1/8	.13
4129-020	2	3- 9/16	2- 9/16	1/8	.28

Coupling - Reducer

Socket x Socket
 NSF® Certified Lead Free



Part Number	Size	L	M	M1	N	Approx. Wt. (Lbs.)
4129-101	3/4X1/2	1-11/32	1- 3/32	27/32	3/32	.02
4129-130	1X1/2	2- 7/32	1-11/32	1-11/32	25/32	.08
4129-131	1X3/4	1- 3/4	1-11/32	1- 3/32	1/8	.03
4129-166 ¹	1-1/4X1/2	2- 5/8	1-21/32	1-21/32	1	.14
4129-167 ¹	1-1/4X3/4	2- 5/8	1-21/32	1-21/32	13/16	.14
4129-168 ¹	1-1/4X1	2- 5/8	1-21/32	1-21/32	5/8	.12
4129-209 ¹	1-1/2X1/2	3- 1/16	1-31/32	1-31/32	1- 7/32	.23
4129-210 ¹	1-1/2X3/4	3- 1/16	1-31/32	1-31/32	1- 1/32	.23