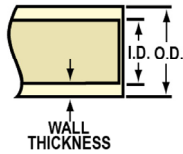




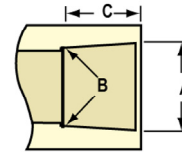
CTS CPVC Technical CTS Product Dimensions

CPVC 41, SDR 11 PIPE DIMENSIONS (CTS) ASTM D 2846, D 2846M



Nominal Pipe Size In.	Mean Outside Diameter In.	O.D. Tolerance In.	Minimum Wall Thickness In.
1/2	0.625	±0.003	0.068
3/4	0.875	±0.003	0.080
1	1.125	±0.003	0.102
1-1/4	1.375	±0.003	0.125
1-1/2	1.625	±0.004	0.148
2	2.125	±0.004	0.193

CPVC 41, SDR 11 SOCKET DIMENSIONS (CTS) ASTM D 2846, D 2846M



Nominal Size In.	Diameter			Socket Length Minimum C
	Entrance A	Bottom B	Tolerance In.	
1/2	0.633	0.619	±0.003	0.500
3/4	0.884	0.870	±0.003	0.700
1	1.1345	1.121	±0.003	0.900
1-1/4	1.386	1.372	±0.003	1.100
1-1/2	1.640	1.622	±0.004	1.300
2	2.141	2.123	±0.004	1.700

Injection Molded Dimension References:

G = (LAYING LENGTH) intersection of center lines to bottom of socket/thread; 90° elbows, tees, crosses; ± 1/32 inch.

H = Intersection of center lines to face of fitting; 90° elbows, tees, crosses; ± 1/32 inch.

J = Intersection of center lines to bottom of socket/thread; 45° elbows; ± 1/32 inch.

L = Overall length of fittings; ± 1/16 inch.

M = Outside diameter of socket/thread hub; ± 1/16 inch.

N = Socket bottom to socket bottom; couplings; ± 1/16 inch.

W = Height of cap; ± 1/16 inch.

COPPER TUBE SIZE (CTS) CPVC PIPE

Nominal Pipe Size In.	AVG. O.D	AVG. I.D	MIN. Wall	MAX. W.P. P.S.I	LBS./FT	Lgths./Carton
1/2	Entrance	0.469	0.068	400	.090	50
3/4	0.875	0.695	0.080	400	.149	25
1	1.125	0.901	0.102	400	.353	10
1-1/4	1.375	1.105	0.125	400	.353	10
1-1/2	1.625	1.309	0.148	400	.489	6
2	2.125	1.716	0.193	400	.829	4

Standard Length- 10 Feet · All pipe is packed in boxes sold in carton quantities only.
Pipe has UL 94 V-O rating · For water, non shock, at 73.4°F with solvent welded joints.

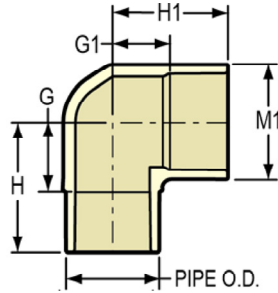


CTS CPVC Technical
CTS Product Dimensions



90° Street Ell

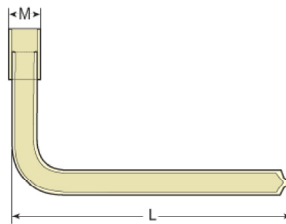
Spigot x Socket
 NSF® Certified Lead Free



Part Number	Size	G	G1	H	H1	M1	Pipe O.D.	Approx. Wt. (Lbs.)
4109-005	1/2	17/32	3/8	1- 1/16	7/8	7/8	5/8	.02
4109-007	3/4	19/32	17/32	1- 5/16	1- 1/4	1- 1/32	7/8	.04
4109-010	1	25/32	21/32	1-13/16	1- 9/16	1-11/32	1-1/8	.09

90° Stub Out Ell

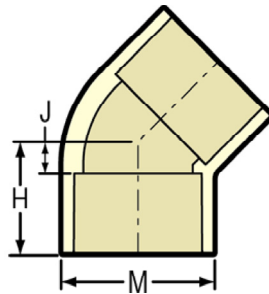
Socket x Closed End
 NSF® Certified Lead Free



Part Number	Size	L	M	Approx. Wt. (Lbs.)
S4106-005	1/2	8-9/32	27/32	.09

45° Ell

Socket x Socket
 NSF® Certified Lead Free



Part Number	Size	H	J	M	Approx. Wt. (Lbs.)
4117-005	1/2	23/32	7/32	27/32	.01
4117-007	3/4	31/32	7/32	1- 1/8	.03
4117-010	1	1- 7/32	9/32	1- 3/8	.05
4117-012	1-1/4	1-15/32	11/32	1-11/16	.11
4117-015	1-1/2	1- 3/4	7/16	1-31/32	.17
4117-020	2	2- 1/4	17/32	2- 9/16	.37