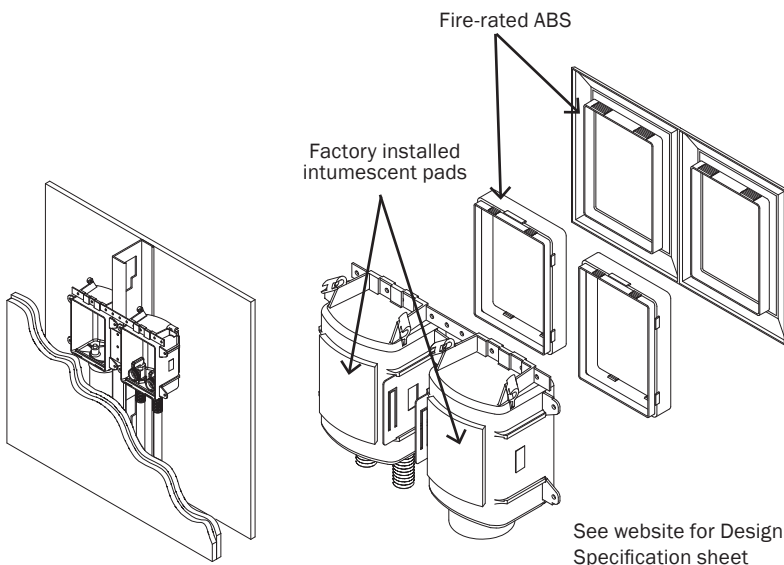


# Fire-Rated Ox Box™

## Outlet Box

Patent #7,360,553 & #7,735,511

- Over-the-stud installation or separate stud installation is required, see instructions
- Warnock Hersey Certified
- Constructed using fire-retardant plastic resin
- Over-the-stud installation is the quickest, easiest, strongest, and carries the highest rated fire certification in the industry
- Debris covers included to protect boxes from drywall mud and paint



The Fire-Rated Ox Box™ is certified by Intertek/Warnock Hersey to the following Fire Rating Standards:

**ASTM E-814**

2 hours (F), 1½ hours (T) for 2-hour design

1 hour (F), 31 min (T) for 1-hour design

**CAN/ULC S115**

2 hours (F), 1½ hours (T) for 2-hour design

1 hour (F), 31 min (T) for 1-hour design

**ASTM E119**

**UL 1479**



# Fire-Rated Ox Box™

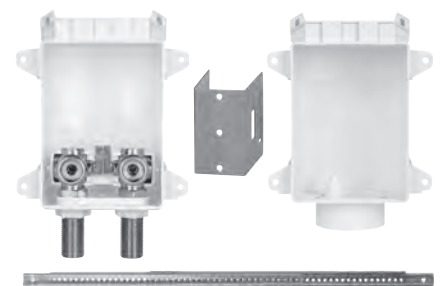
## Washing Machine Outlet Box

Patent #7,360,553 & #7,735,511

- Boxes mount securely to stud or over studs
- Separates supply and drainage systems into two stud bays
- Drain knockout is easy to remove with pliers
- Supply lines can be mounted from above or below
- High-quality quarter-turn ball valves
- ¾" male hose-thread outlet connections

Item No	Shank Connection	<b>NO LEAD</b>	Pkg	Min Qty	Case Qty
<b>STANDARD PACK</b>					
696R2303MF	½" female sweat		B*	10	10
696R2303CF	½" CPVC male		B*	10	10
696R2303XF	½" PEX F1807		B*	10	10
696R2303WF	½" PEX F1960		B*	10	10
696R2303AF	½" PEX F2080		B*	10	10
696RG2303MF	½" female sweat, no lead	✓	B*	10	10
696RG2303CF	½" CPVC male, no lead	✓	B*	10	10
696RG2303XF	½" PEX F1807, no lead	✓	B*	10	10
696RG2303WF	½" PEX F1960, no lead	✓	B*	10	10

**Standard Pack**



696R2303MF

