

SUPPLY

DRAINAGE

SUPPORT

APPENDIX



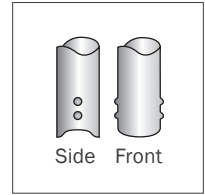
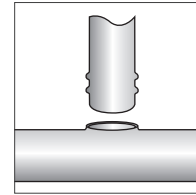
624-L12D

Bullet™

Dimple & Notch Stub Out

- Use with T-Drill® extrusion-type tees
- Double dimples meet code requirements
- Guaranteed leakproof spin closure

Be sure dimples on Bullet™ connection are in line with trunk line.



Item No	Copper Type	CTS	Length	Pkg	Min Qty	Case Qty
624-L12D	L	1"	12"	B	30	30
624-L18D	L	1"	18"	B	30	30
624-L24D	L	1"	24"	B	30	30

T-Drill® is a registered trademark of T-Drill Industries Inc.



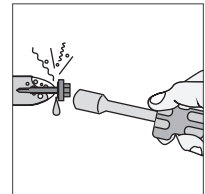
622-L08W

Bullet™

Wet Test Stub Out

- Perfect for double-checking crossed hot and cold water lines
- Excellent way to flush lines before testing

5/16" galvanized steel hex head screw with built in gasket allows for bleedable waterline tests.



Item No	Copper Type	CTS	Length	Pkg	Min Qty	Case Qty
622-L08W	L	1/2"	8"	B	100	100



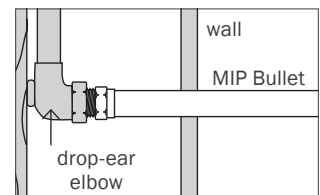
614-6M

Bullet™

1/2" MIP Stub Out

- Use permanently or for temporary tub/shower valve stub out test
- Lead-free solder joint

Perfect for tub spout nipples.



Item No	CTS	Length	Pkg	Min Qty	Case Qty
614-6M	1/2"	6 1/2"	B	50	50
614-8L	1/2"	8 1/2"	B	50	50
614-6MPK	1/2"	6 1/2"	C*	50	50