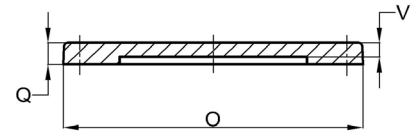


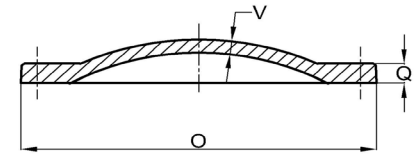
# C110 FLANGED FITTINGS

## BLIND FLANGES

Size	Weight	CAST IRON		DUCTILE IRON		O	Q	V
		Soild	Trapped	Solid	Tapped			
2		BCF2		BDF2		6.00	0.62	0.31
2.5		BCF2.5		BDF25		7.00	0.69	0.48
3	9	BCF3	BTF3	BDF3	DTF3	7.50	0.75	0.69
4	14	BCF4	BTF4	BDF4	DTF4	9.00	0.94	0.88
6	24	BCF6	BTF6	BDF6	DTF6	11.00	1.00	0.94
8	38	BCF8	BTF8	BDF8	DTF8	13.50	1.12	1.06
10	59	BCF10	BTF10	BDF10	DTF10	16.00	1.19	1.12
12	76	BCF12	BTF12	BDF12	DTF12	19.00	1.25	0.81
14	110	BCF14	BTF14	BDF14	DTF14	21.00	1.38	0.88
16	145	BCF16	BTF16	BDF16	DTF16	23.50	1.44	1.00
18	185	BCF18	BTF18	BDF18	DTF18	25.00	1.56	1.06
20	217	BCF20	BTF20	BDF20	DTF20	27.50	1.69	1.12
24	370	BCF24	BTF24	BDF24	DTF24	32.00	1.88	1.25
30	500	BCF30	BTF30	BDF30	DTF30	38.75	2.12	1.44
36	790	BCF36	BTF36	BDF36	DTF36	46.00	2.38	1.62
42	1,175	BCF42	BTF42	BDF42	DTF42	53.00	2.62	1.81
48	1,585	BCF48	BTF48	BDF48	DTF48	59.50	2.75	2.00
54	2,600	BCF54	BTF54	BDF54	DTF54	66.25	3.00	0.90
60				BDF60		73.00	3.12	2.50
64				BDF64		80.00	3.38	2.56
72				BDF72		86.50	3.50	2.56
96				BDF96		113.25	4.25	3.20



Blind Flange Solid



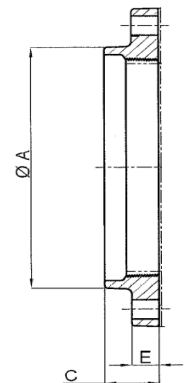
Blind Flange Tapped

## SLUDGE SHOES

Size	Weight	Item No.	A Bolt Circle	Bolt Hole Diameter	B
3	25	CFS3	5.75	7/8	12.00
4	35	CFS4	6	7/8	12.00
6	45	CFS6	8	7/8	12.00
8	65	CFS8	10	7/8	12.00
10	85	CFS10	12.25	1.00	12.00
12	120	CFS12	14.5	1.00	12.00

## THREADED FLANGES

Size	Wt.	Item No.	C	E	A	Item No.	Wt.	C	E	A
3	7	DF3	1.935	0.75	4.50	DF3-S	7.00	1.63	0.75	4.50
4	12	DF4	2.065	0.94	5.32	DF4-S	12.00	1.69	0.94	5.32
6	16.5	DF6	2.255	1.00	7.56	DF6-S	16.50	1.94	1.00	7.56
8	25	DF8	2.435	1.12	9.73	DF8-S	25.00	2.25	1.12	9.73
10	35	DF10	2.625	1.19	12.06	DF10-S	35.00	2.38	1.19	12.06
12	55	DF12	2.875	1.25	14.16	DF12-S	55.00	2.50	1.25	14.16
14	63	DF14	3.065	1.38	16.25	DF14-S	63.00	2.63	1.38	21.00
16	81	DF16	3.255	1.44	18.44	DF16-S	81.00	2.63	1.44	23.50
18	89	DF18	3.505	1.56	20.53	DF18-S	89.00	3.50	1.56	25.00
20	109	DF20	3.685	1.69	22.63	DF20-S	109.00	3.69	1.69	27.50
24	154	DF24	4.125	1.88	26.82	DF24-S	154.00	4.12	1.88	32.00
30	215	DF30	4.69	2.12	32.75	DF30-S	237.00	4.69	2.12	38.75
36	324	DF36	5.31	2.38	39.12	DF36-S	350.00	5.31	2.38	46.00
42	534	DF42	5.94	2.63	45.31	DF42-S	493.00	5.94	2.62	53.00
48	650	DF48	6.57	2.75	51.75	DF48-S	610.00	6.57	2.75	59.50
54	762	DF54	7.19	3.00	58.75	DF54-S	726.00	7.19	3.00	66.25
60	1,055	DF60	7.19	3.12	63.76	DF60-S		7.19	3.12	73.00
64	1,200	DF64	7.19	3.38	70.32	DF64-S				



Threaded Flange

Note: Cast Iron fittings available upon request  
Weights in Pounds, Less Accessories / Dimensions in inches

