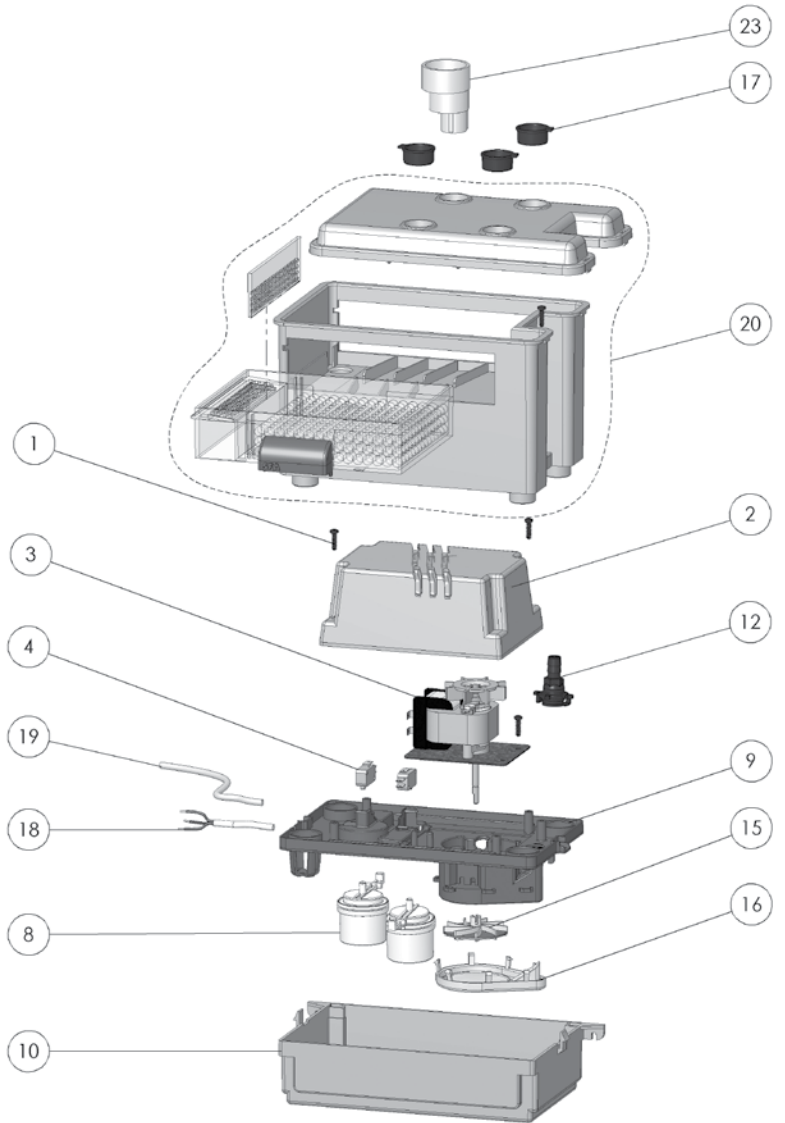
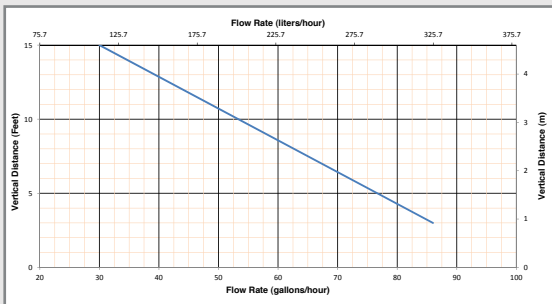
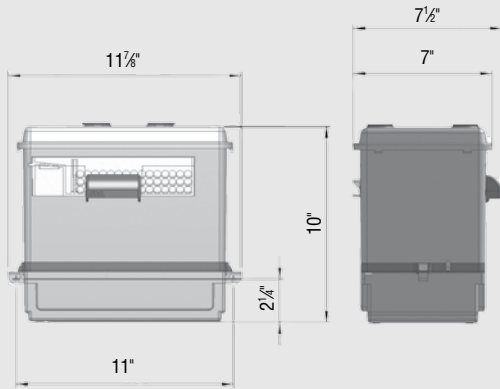
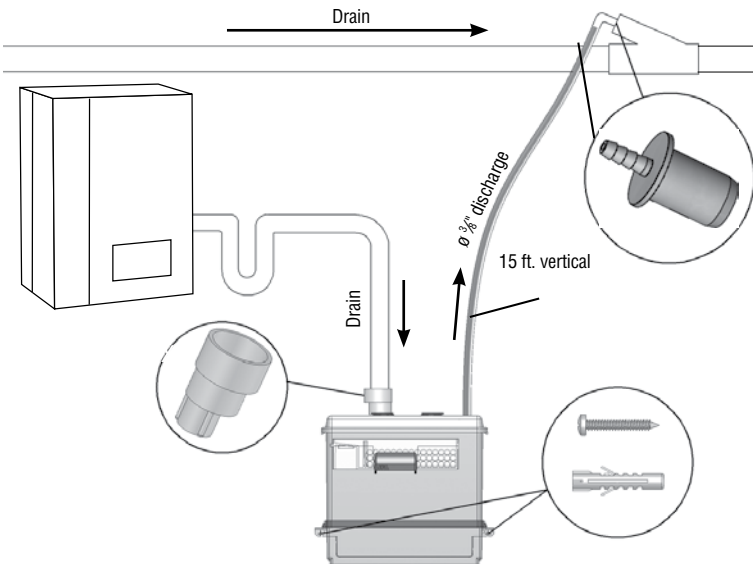




Discharge pipe diameter: $\frac{3}{8}$ "
 Discharge rate at 15 ft: 30 GPH
 Discharge rate at 3 ft: 86 GPH
 Normal running time: 3-5 seconds (short bursts)
 Capacity: 0.55 gallon
 Inlets: 1" (top)
 Method of activation: Float/microswitch
 Weight: 8 lbs.
 Certifying agencies: CSA (IPC, NSPC)
 Recommended accessories: Neutralizing granules (Part# 042)
 Connections: Condensing boiler, HVAC systems,
 air conditioners



PLEASE CALL US TOLL-FREE AT 800-571-8191 (US) / 800-363-5874 (CDN)
 TO PURCHASE PARTS REFERENCED ABOVE



2 IN 1 CONDENSATE PUMP WITH BUILT-IN NEUTRALIZER FOR HARSH HVAC APPLICATIONS

Neutralizing agent (Part# 042) is used to **raise the pH level** from condensate being produced by condensing boilers, air conditioners, etc.

The two quart capacity condensate pump comes equipped with **all the necessary hardware for easy installation**. It can be installed on top of flat surface or wall mounted.