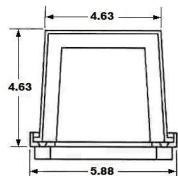


Freeze Cap Faucet Insulator, Wall Mount



- Insulates outdoor faucets and protects from wind chill
- Slotted mounting plate allows cover to twist on or off
- Includes all mounting hardware and instructions
- Helps deter tampering with outside faucets
- Improves aesthetics of any building, even in warm climates

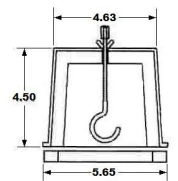


| PART # | DESCRIPTION |
|--------|-----------------------------|
| PFC1 | Wall Mount Faucet Insulator |

Freeze Cap Faucet Insulator, Hook Mount



- Insulates outdoor faucets and protects from wind chill
- Installs with no tools or drilling
- Includes all mounting hardware and instructions
- Helps deter tampering with outside faucets
- Improves aesthetics of any building, even in warm climates

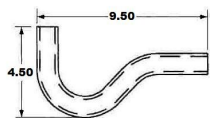


| PART # | DESCRIPTION |
|--------|-----------------------------|
| PFC2 | Hook-mount Faucet Insulator |

PVC P-Trap

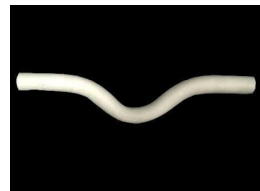


- Smooth-flowing, one-piece PVC trap
- "P" design
- Eliminates the need for makeshift traps
- Schedule 40 DWV pipe



| PART # | SIZE | DESCRIPTION |
|--------|------|-------------|
| P46705 | 1/2" | P-Trap |
| P46708 | 3/4" | P-Trap |
| P46710 | 1" | P-Trap |

PVC Running-Trap



- Smooth-flowing, one-piece PVC trap
- Eliminates the need for makeshift traps
- Schedule 40 DWV pipe



| PART # | SIZE | DESCRIPTION |
|--------|------|--------------|
| R46805 | 1/2" | Running-Trap |
| R46808 | 3/4" | Running-Trap |
| R46810 | 1" | Running-Trap |