



**OLYMPIA FAUCETS, INC.**  
 Interchange City Distribution Center #20  
 1277 Heil Quaker Boulevard  
 La Vergne, TN 37086  
 (888) 772-7701  
 www.olympiafaucets.com

# INSTALLATION

**Tools:**



**Model Number:** P-1210, P-1211, P-1212, P-1220, P-1221, P-1222, P-3210, P-3220

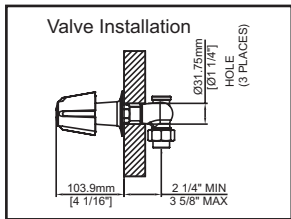
**Warnings and Notes:**

Check with local plumbing code requirements before installation.  
 This product should be installed by a local listed plumber.  
**Do not use plumbers putty on threads.**

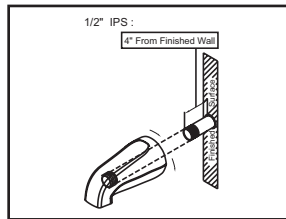


**Installation Steps:**

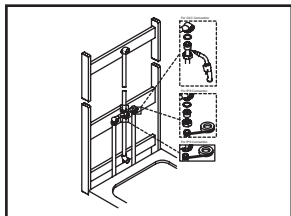
Two & Three Handle Tub / Shower Sets



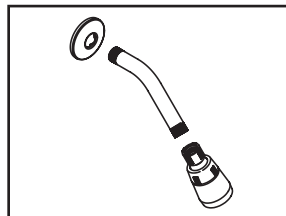
(1) Determine the location of the valve to be installed for new installation. For existing installation look at the installation drawing and ensure there is enough room to install the valve.



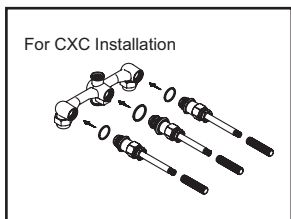
(4) The 1/2" pipe thread nipple must be kept with the length of 4" from finished wall. Apply Teflon tape at thread end, screw tub spout onto pipe thread nipple and tighten by strap wrench.



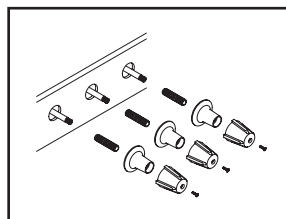
(2) Install the outlet connections. Apply Teflon tape at threaded connections. Install inlet connections. Hot water supply should be on the left hand side and cold water supply should be on the right hand side.



(5) Use silicon to caulk the back of shower arm flange. Slide shower arm flange on shower arm. Apply Teflon tape on both thread ends of shower arm, install shower arm to elbow and tighten with help of strap wrench. Press shower arm flange against finished wall. Turn on water to flush the system. Turn off water and attach showerhead to shower arm.



(3) For CXC installation: Remove washer from bottom of tailpiece union, slide tailpiece locknut on inlet copper pipe, solder inlet copper pipe into tailpiece union, replace washer back after tailpiece union cooled down. Tighten tailpiece locknut to rough-in valve with help of pipe wrench.

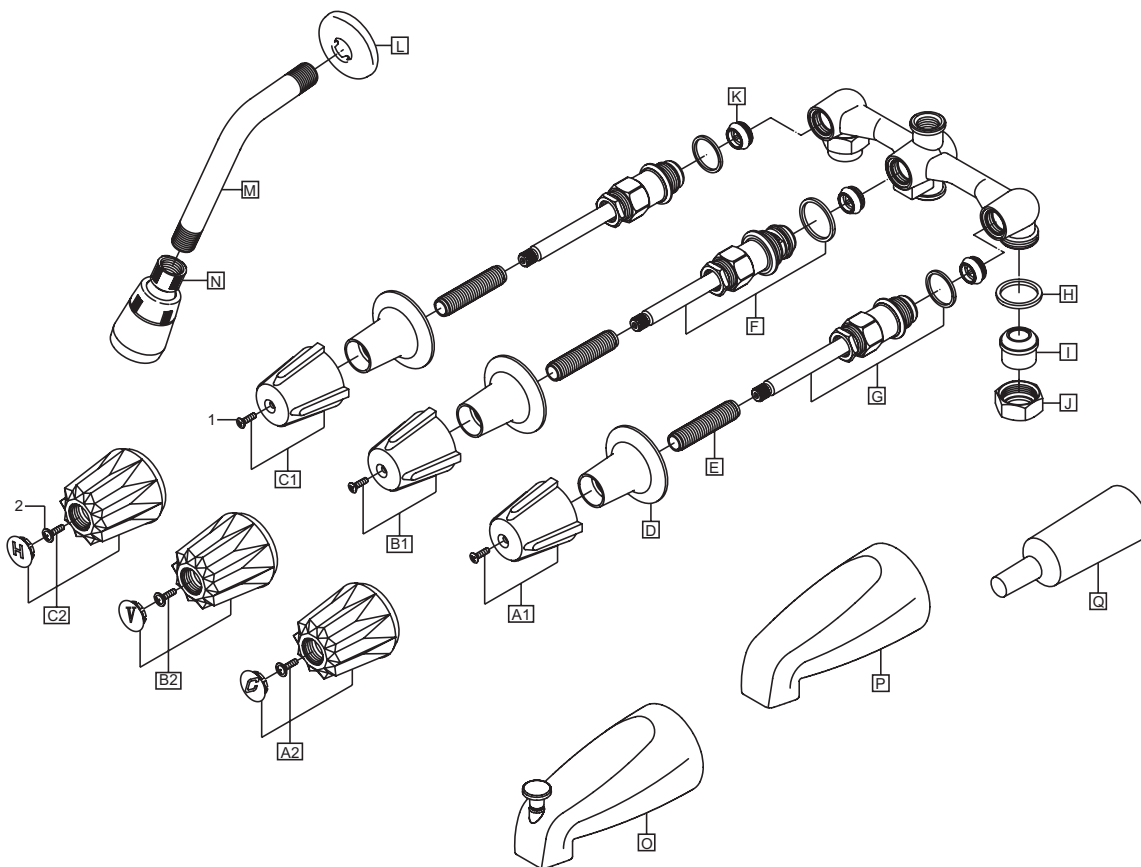


(6) Apply adequate plumbers putty on the back of valve escutcheon, thread plastic nipple onto stem set then thread valve escutcheon onto nipple till against finished wall. Attach handle to stem set and tighten handle screw with help of screwdriver.

## Exploded Drawing:

|   | ITEM #    | DESCRIPTION   |
|---|-----------|---|
| O | OP-640015 | 1/2" IPS Diverter Tub Spout (For P-1210, P-1220)        |
| P | OP-640014 | 1/2" IPS Tub Spout (For P-1211, P-1221, P-3210, P-3220) |
| Q | OP-440017 | Mud Guard   |
| 1 | OP-490037 | Handle Screw  |
| 2 | OP-490025 | Handle Screw  |

|    | ITEM #     | DESCRIPTION                         |
|----|------------|-------------------------------------|
| A1 | OP-190013C | Metal Handle-Cold                   |
| A2 | OP-190009C | Acrylic Handle-Cold                 |
| B1 | OP-140004V | Metal Handle Diverter               |
| B2 | OP-140005V | Acrylic Handle Diverter             |
| C1 | OP-190013H | Metal Handle-Hot                    |
| C2 | OP-190009H | Acrylic Handle-Hot                  |
| D  | OP-440012  | Valve Escutcheon                    |
| E  | OP-440013  | Plastic Nipple                      |
| F  | OP-340002  | Diverter Stem Set                   |
| G  | OP-340001  | Stem Set                            |
| H  | OP-440050  | Washer                              |
| I  | OP-440015  | Tailpiece Union                     |
| J  | OP-440016  | Tailpiece Locknut                   |
| K  | OP-440014  | Show Seat                           |
| L  | OP-640001  | Shower Arm Flange                   |
| M  | OP-640002  | 6" Shower Arm                       |
| N  | OP-640005  | Single Function Standard Showerhead |



**OLYMPIA**

For more care information or trouble shooting inquiries about your Olympia product, Please call:  
**OLYMPIA FAUCETS, INC.** (888) 772-7701  
 8AM - 8PM EST (5AM to 5PM PST)  
[www.olympiafaucets.com](http://www.olympiafaucets.com)