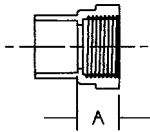
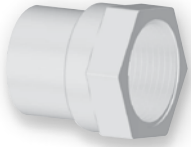


# CPVC-CTS Pressure Fittings

## ADAPTERS

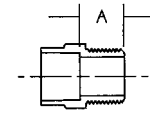
4703



### Female Adapter w/Washer (Slip x FIPT)

NOM. SIZE	APPROX. NET WT./LBS.	DIM. A INCHES
1/2	.026	3/4
3/4	.039	25/32
1	.065	29/32

4704

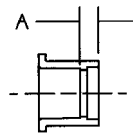
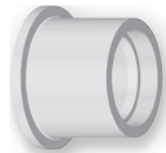


### Male Adapter (Slip x MIPT)

NOM. SIZE	APPROX. NET WT./LBS.	DIM. A INCHES
1/2	.023	7/8
3/4	.035	7/8
1	.060	1 1/16
1 1/4	.104	1 1/16
1 1/2	.155	1 1/8
2	.285	1 3/16

## BUSHINGS

4718



### Bushing (Spg x Slip)

NOM. SIZE	APPROX. NET WT./LBS.	DIM. A INCHES
3/4 x 1/2	.012	7/32
1 x 1/2	.031	1/2
1 x 3/4	.025	5/16
1 1/4 x 1/2	.052	23/32
1 1/4 x 3/4	.055	1/2
1 1/4 x 1	.039	5/16
1 1/2 x 1/2	.081	29/32
1 1/2 x 3/4	.083	29/32
1 1/2 x 1	.083	1/2
1 1/2 x 1 1/4	.053	5/16
2 x 1/2	.170	1 5/16
2 x 3/4	.171	1 1/8
2 x 1	.174	29/32
2 x 1 1/4	.182	23/32
2 x 1 1/2	.148	1/2

**FLOWGUARD GOLD**  
CPVC

Do not use or test the products in this catalog with compressed air or other gasses. FlowGuard Gold® is a registered trademark of The Lubrizol Corporation.