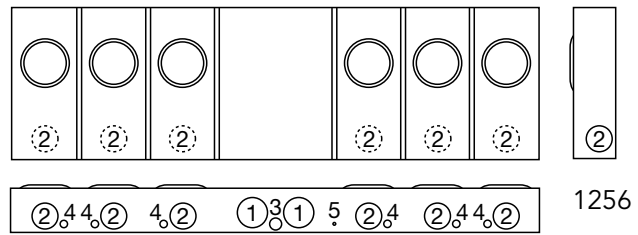
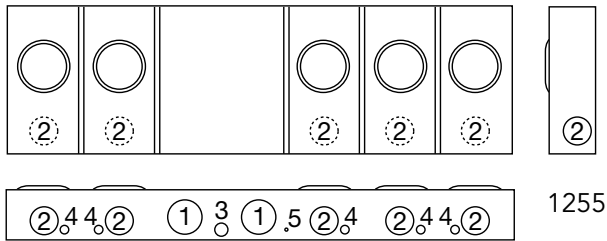
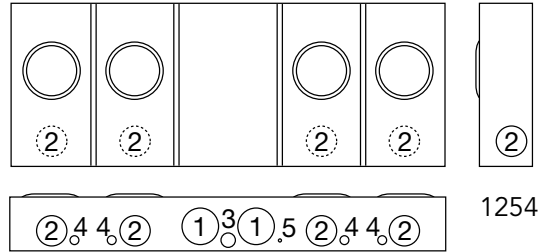
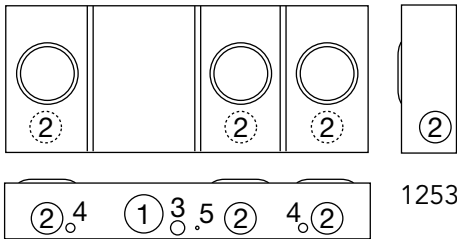
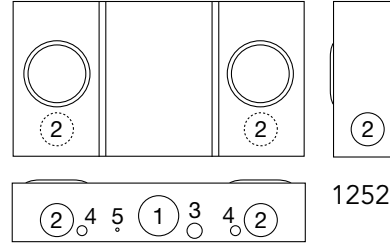




U1254-X



200 Amp per Position | 4 Terminal | Multi-Position | Center Wireway | Ringless

Catalog Number	Positions	Service	Hub	Connectors CU/AL		Dimensions			Knockouts				
				Line	Load	D"	W"	H"	1	2	3	4	5
U1252-REL-K1	2	OH/UG	2½	#6-350	#6-350	5⅞	26½	14	3	2½	1	½	¼
U1253-X	3	OH/UG	C.P.	⅜" x 16 Stud	#6-350	5⅞	34½	14	3	2½	1	½	¼
U1254-X	4	OH/UG	C.P.	⅜" x 16 Stud	#6-350	5⅞	42⅛	16	3	2½	1	½	¼
U1255-X	5	OH/UG	C.P.	⅜" x 16 Stud	#6-350	5⅞	54⅛	16	3	2½	1	½	¼
U1256-X	6	OH/UG	C.P.	⅜" x 16 Stud	#6-350	5⅞	62⅞	18	3	2½	1	½	¼

Notes

- **Hubs:** For proper hub selection, refer to the hub suffix chart on the accessories page. For the **U1254-6** two hub openings are supplied and the extra opening is closed with a closing plate as standard.
- **Fifth Terminal:** For field mounted fifth terminal, order catalog number **K5T** (9 o'clock position).
- **Connectors:** Extruded aluminum connectors are tin plated.
- **Amperage Rating:** The **U1255** and **U1256** are rated 160 amps continuous, 200 amps maximum.



Utility requirements for this equipment may vary. Always consult the serving utility for their requirements before ordering or installing equipment.