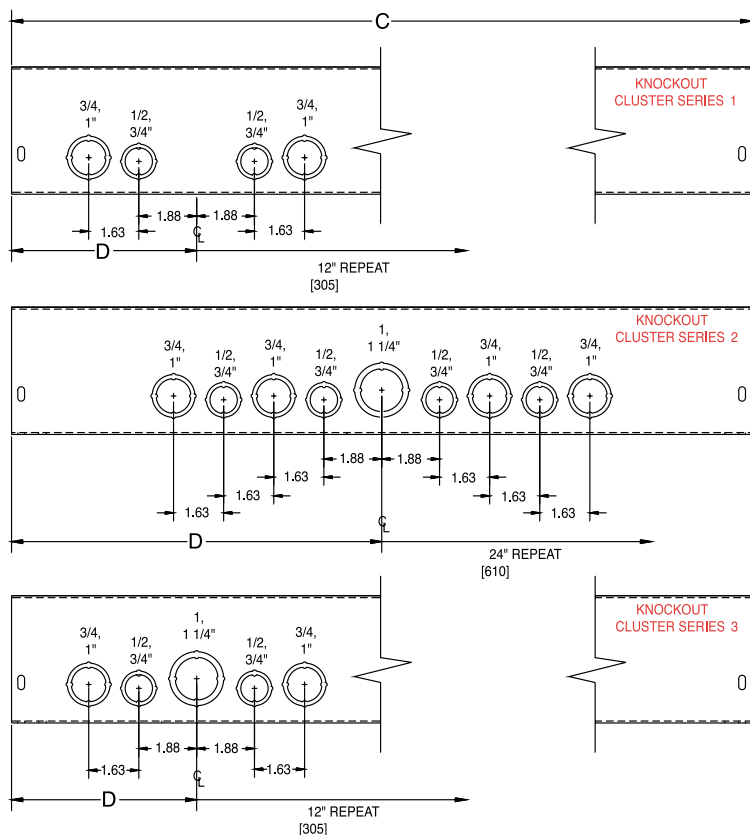


COMMERCIAL ENCLOSURES  
GSC1 LAY-IN WIREWAYS TYPE 1



**INDUSTRY STANDARDS**

- NEMA - Type 1
- UL 870-Type 1
- CUL - Type 1 (Equivalent to CSA)

**APPLICATION**

- Designed to allow long interrupted runs of electrical wiring in applications where moisture and dust are not a problem.
- All straight sections and fittings are completely open on one side so wires can be laid-in to the wireway.

**CONSTRUCTION**

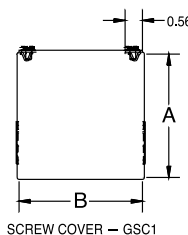
- Wireway and cover are manufactured from code **G90** gauge steel.
- Available with or without knockouts. For no knockouts, refer to suffix **-NK** in catalog number.
- Available with or without paint. For no paint, refer to suffix **-NP** in catalog number. Note: Unpainted enclosures are made from **G90** galvanized steel.
- Covers incorporate teardrop slots for easy installation and are attached with plated steel screws.
- Available in seven standard sizes, 2.5x2.5, 4x4, 4x6, 6x6, 8x8, 10x10, and 12x12.
- Wide range of fittings allows for change of direction, junctions, terminations as well as transition from competitors products.

**FINISH**

- ANSI 61 gray polyester powder paint coating.

**ACCESSORIES**

- Replacement Covers – see pg. B22.
- Touch-Up paint – see Accessories pg. B34.
- Barrier Kit – see Accessories pg. B34.



SCREW COVER – GSC1

CATALOG NUMBER	PRODUCT FAMILY	UPC NUMBER 7-84572-	WEIGHT (LBS)	CARTON QUANTITY	H X D X L	KO CLUSTERS PER SIDE	NUMBER OF CLUSTERS
2212-GSC1	GSC1	26598	2.5	4	2.5 x 2.5 x 12	Series 1	1
2212-GSC1-NK	GSC1	26573	2.5	4	2.5 x 2.5 x 12	NONE	NONE
2212-GSC1-NK-NP	GSC1	26599	2.5	4	2.5 x 2.5 x 12	NONE	NONE
2218-GSC1	GSC1	26600	3.6	4	2.5 x 2.5 x 18	Series 1	1
2218-GSC1-NK	GSC1	26601	3.6	4	2.5 x 2.5 x 18	NONE	NONE
2218-GSC1-NK-NP	GSC1	26602	3.6	4	2.5 x 2.5 x 18	NONE	NONE
2218-GSC1-NP	GSC1	26621	3.6	4	2.5 x 2.5 x 18	Series 1	1
2224-GSC1	GSC1	26574	5	4	2.5 x 2.5 x 24	Series 1	2
2224-GSC1-NK	GSC1	26603	5	4	2.5 x 2.5 x 24	NONE	NONE
2224-GSC1-NK-NP	GSC1	26604	5	4	2.5 x 2.5 x 24	NONE	NONE
2236-GSC1	GSC1	26605	7	4	2.5 x 2.5 x 36	Series 1	3
2236-GSC1-NK	GSC1	26606	7	4	2.5 x 2.5 x 36	NONE	NONE
2248-GSC1	GSC1	26608	10	4	2.5 x 2.5 x 48	Series 1	4
2248-GSC1-NK	GSC1	26609	10	4	2.5 x 2.5 x 48	NONE	NONE
2260-GSC1	GSC1	26611	12	4	2.5 x 2.5 x 60	Series 1	5
2260-GSC1-NK	GSC1	26612	12	4	2.5 x 2.5 x 60	NONE	NONE
2272-GSC1	GSC1	26614	14	4	2.5 x 2.5 x 72	Series 1	6
2272-GSC1-NK	GSC1	26615	14	4	2.5 x 2.5 x 72	NONE	NONE
2272-GSC1-NK-NP	GSC1	26616	14	4	2.5 x 2.5 x 72	NONE	NONE
2296-GSC1-NK	GSC1	26782	19	4	2.5 x 2.5 x 96	NONE	NONE
22120-GSC1	GSC1	26617	25	4	2.5 x 2.5 x 120	Series 1	10
22120-GSC1-NK	GSC1	26618	25	4	2.5 x 2.5 x 120	NONE	NONE
22120-GSC1-NK-NP	GSC1	26619	25	4	2.5 x 2.5 x 120	NONE	NONE
4412-GSC1	GSC1	10627	3.8	4	4 x 4 x 12	Series 3	1

Utility requirements for this equipment may vary. Always consult the serving utility for their requirements before ordering or installing equipment in this catalog.

