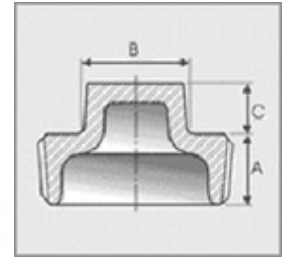


# DIMENSIONAL SPECIFICATIONS

## LEAD-FREE IMPORT BRASS FITTINGS\* 125 LB.

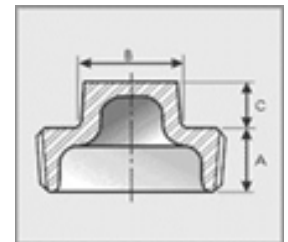
### SQUARE HEAD CORED PLUG

| Part #    | Size (IN.) | Approx. Net WT. (LB.) | A    | B    | C    |
|-----------|------------|-----------------------|------|------|------|
| XNL117-08 | 1/2        | 0.11                  | 0.54 | 0.56 | 0.38 |
| XNL117-12 | 3/4        | 0.16                  | 0.55 | 0.63 | 0.44 |
| XNL117-16 | 1          | 0.25                  | 0.69 | 0.81 | 0.50 |
| XNL117-20 | 1-1/4      | 0.38                  | 0.71 | 0.94 | 0.56 |
| XNL117-24 | 1-1/2      | 0.52                  | 0.73 | 1.13 | 0.62 |
| XNL117-32 | 2          | 0.83                  | 0.76 | 1.31 | 0.68 |
| XNL117-40 | 2-1/2      | 1.26                  | 1.07 | 1.50 | 0.74 |
| XNL117-48 | 3          | 1.49                  | 1.13 | 1.69 | 0.80 |
| XNL117-64 | 4          | 3.20                  | 1.22 | 2.25 | 0.92 |



### SQUARE HEAD SOLID PLUG

| Part #     | Size (IN.) | Approx. Net WT. (LB.) | A    | B    | C    |
|------------|------------|-----------------------|------|------|------|
| XNL117A-06 | 3/8        | 0.07                  | 0.41 | 0.44 | 0.31 |
| XNL117A-08 | 1/2        | 0.12                  | 0.54 | 0.56 | 0.38 |
| XNL117A-12 | 3/4        | 0.18                  | 0.55 | 0.63 | 0.44 |
| XNL117A-16 | 1          | 0.38                  | 0.69 | 0.81 | 0.50 |
| XNL117A-20 | 1-1/4      | 0.59                  | 0.71 | 0.94 | 0.56 |
| XNL117A-24 | 1-1/2      | 0.89                  | 0.73 | 1.13 | 0.62 |
| XNL117A-32 | 2          | 1.39                  | 0.76 | 1.31 | 0.68 |
| XNL117A-40 | 2-1/2      | 2.35                  | 1.07 | 1.50 | 0.74 |
| XNL117A-48 | 3          | 3.59                  | 1.13 | 1.69 | 0.80 |
| XNL117A-64 | 4          | 6.82                  | 1.22 | 2.25 | 0.92 |



\*Conforms with lead content requirements for lead-free plumbing as defined by the U.S. Safe Drinking Water Act. Certified <0.25 weighted average % lead.



# MERIT BRASS

DIRECTING THE FLOW OF *Quality*