

**VENTING PRODUCTS (Cont'd.)**



**Flush Mount Vents**

**Flush Mount & Wall Vents**

Size	Description	Vent P/N
4"	Flush Mount Paintable, 26 Ga PG	V-SBLV4
4"	Round 26 Ga Steel	V-WV4
5"	Round Alum.	V-WV5
6"	Round Alum.	V-WV6
7"	Round Alum.	V-WV7
7"	Round Alum. wo/Collar w/Screen	CP-VC7WV
8"	Round 26 Ga Steel	V-WV8
10"	Round 26 Ga Steel	V-WV10
12"	Round 26 Ga Steel	V-WV12



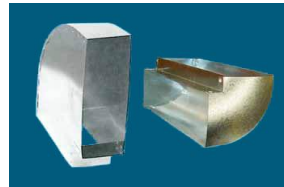
**Wall Vents**

**Wall Stack Duct**

Size in Inches	Wall Stack P/N
10 x 3¼ x 30	V-WS1030
10 x 3¼ x 36	V-WS1036
10 x 3¼ x 48	V-WS1048
10 x 3¼ x 60	V-WS1060
12 x 3¼ x 36	V-WS1236
14 x 3¼ x 36	V-WS1436
10 x 3¼ End Cap	V-WSEC1031/4
14 x 3¼ End Cap	V-WSEC1431/4

**10" x 3¼" Rectangle Elbows**

Description	Elbow P/N
Long Way Elbow	V-LE1031/4
Short Way Elbow	V-SE31/410



**Long Way Elbow**

**Short Way Elbow**

**10" x 3¼" Aluminum Wall Vent w/Damper**

Description	Vent P/N
Wall Vent	V-WV1031/4



**10" x 3¼" Aluminum Wall Vent w/Damper**

**Slab and K&S Slab Vents**

Size in Inches	Description	Vent P/N
10 x 5 x 21 x 6" Collar	Slab Vent	V-SV
10 x 3¼ x 22 x 6" Collar	K & S Slab Vent	V-SVKS



**K & S Slab Vent 10" x 3¼" x 22" w/6" Collars**

**Slab Vent 10" x 5" x 21" w/6" Collars**

**10" x 3¼" # 201V Adapters**

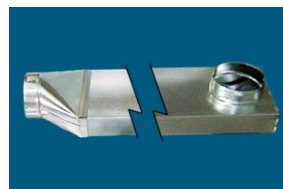
Size in Inches	# 201V P/N
10 x 3¼ x 5	201V1031/45
10 x 3¼ x 6	201V1031/46
10 x 3¼ x 7	201V1031/47
10 x 3¼ x 8	201V1031/48



**# 201V Adapter 10" x 3¼" x Size Noted**

**10" x 3¼" # JATA Telescoping Assembly**

Size in Inches	# JATA P/N
10 x 3¼ With 6" Collar	V-JATA6



**Jenn Air® Telescoping Assembly w/ 6" Collar (Shown w/Boot, order separately)**