



3" x 2" SWITCH BOXES – WITH CONDUIT KO'S



400



420



500, 8500



501



503



502



504, 8504



505



506



509



508

**APPLICATIONS**

- RACO® Switch boxes are used to house wiring devices such as switches or outlets

**PRODUCT FEATURES**

- Reference the Box Selection section in the front of this catalog for complete description of bracket types and features
- Gangable switch boxes offer the option of constructing a box to hold two or more devices
- Plaster ears allow box to be used in "old work" applications

**COMPLIANCES**

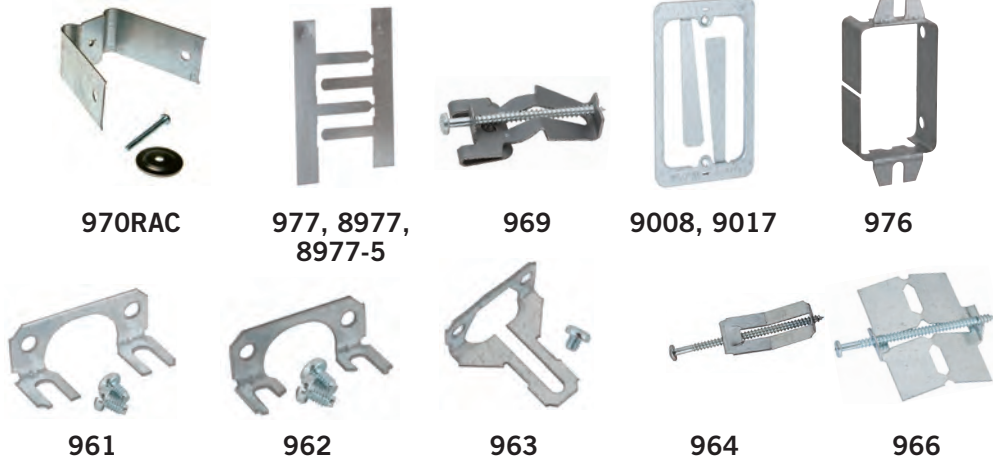
- File E195978
- All RACO® single gang, two gang, 4" square, and single gang gangable U.L. listed steel boxes are acceptable for use in 2-hour fire rated walls. For additional information, consult U.L. "Fire Resistance Directory" or the U.L. website at [www.ul.com](http://www.ul.com)

CAT. #	DESCRIPTION	CUBIC INCHES (CM <sup>3</sup> )	KNOCKOUTS				STD. PKG.	BAR CODE
			SIDES CONDUIT	ENDS CABLE	ENDS CONDUIT	BOTTOM CONDUIT		
<b>1-1/2" Deep Switch Box – Gangable with Conduit KO's</b>								
400	Plaster Ears	7.5 (122.9)	—	—	(2) 1/2"	(1) 1/2"	20	
<b>2" Deep Switch Box – Gangable with Conduit KO's</b>								
420	Plaster Ears	10.0 (163.9)	(4) 1/2"	—	(2) 1/2"	(2) 1/2"	25	
<b>2-1/2" Deep Switch Box – Gangable with Conduit KO's</b>								
500	Plaster Ears	12.5 (204.8)	(4) 1/2"	—	(2) 1/2"	(2) 1/2"	50	—
8500	Plaster Ears	12.5 (204.8)	(4) 1/2"	—	(2) 1/2"	(2) 1/2"	25	
501	No Plaster Ears	12.5 (204.8)	(4) 1/2"	—	(2) 1/2"	(2) 1/2"	50	—
503	Plaster Ears	12.5 (204.8)	(4) 1/2"	—	(2) 3/4"	(2) 1/2"	50	—
502	B Bracket, 5/8" Setback	12.5 (204.8)	(4) 1/2"	—	(2) 1/2"	(2) 1/2"	10	
504	TS Bracket, 1/2" Setback	12.5 (204.8)	(2) 1/2"	—	(2) 1/2"	(2) 1/2"	50	—
8504	TS Bracket, 1/2" Setback	12.5 (204.8)	(2) 1/2"	—	(2) 1/2"	(2) 1/2"	20	
505	TS Bracket, 1/2" Setback	12.5 (204.8)	(2) 1/2"	—	(2) 3/4"	(2) 1/2"	50	—
506	Old Work TIGERGRIP® Plaster Ears	12.5 (204.8)	—	—	(2) 1/2"	(2) 1/2"	20	
509	Old Work, Plaster Ears	12.5 (204.8)	—	—	(2) 1/2"	(2) 1/2"	20	
508	Old Work, 3/4" Sheet Rock Max., Plaster Ears	12.5 (204.8)	—	—	(2) 1/2"	—	20	

SEE END OF SECTION (PG A70) FOR DETAILED DRAWINGS >>



ACCESSORIES FOR STEEL BOXES



970RAC

977, 8977,  
8977-5

969

9008, 9017

976

961

962

963

964

966

**“OLD WORK SADDLE” APPLICATION (970RAC)**

- The “Old Work Saddle” 907RAC is designed to be used with 2-1/2" deep switch boxes that have plaster ears

**“OLD WORK SADDLE” PRODUCT FEATURE**

- 970RAC installs into the 1/2" bottom conduit knockout

**GRIP-LOK® APPLICATION (977, 8977, 8977-5)**

- The GRIP-LOK support is designed to be used with any deep switch box that has plates ears

**GRIP-LOK® PRODUCT FEATURE**

- Simply slip GRIP-LOK between box and wall, then bend tabs into the box

**APPLICATIONS (9008, 9017)**

- Mounts standard low voltage wall plates, old work (existing walls)

**PRODUCT FEATURES**

- For use on low voltage Class 2 circuits only where electrical boxes are not required
- Can be used to mount telephone jacks, computer outlets, security/sound systems, television antennas, etc.
- Fast, precise mounting of low voltage wall plates to walls or studs

**COMPLIANCE**

- File E195973

**ADD-A-DEPTH APPLICATIONS (976)**

- Add-A-Depth ring or “goof ring” is designed to act as a barrier between combustible wall surfaces and the wiring system
- For single and two-gang device boxes
- There is no UL standard for this product
- Subject to acceptance by an electric inspector

CAT. #	DESCRIPTION	STD. PKG.	UPC BAR CODE
<b>Switch Box Support “Old Work Saddle”</b>			
970RAC	Mounts Switch Boxes with Plaster Ears in Hollow Walls or Ceilings	10	IIIIIIII
<b>GRIP-LOK® “Old Work” Switch Box Support</b>			
977	Supplied as a pair. Use pair to mount switch box with plaster ears in hollow wall, 1-7/8" long legs	100 pairs	—
8977	Supplied as a pair. Use pair to mount switch box with plaster ears in hollow wall, 1-7/8" long legs	25 pairs	IIIIIIII
8977-5*	Supplied as a pair. Use pair to mount switch box with plaster ears in hollow wall, 1-7/8" long legs	100 pairs	IIIIIIII
<b>Old Work Switch Box Clips</b>			
969	Old Work Clips for Switch Boxes, 1/2" Sheetrock	50 pairs	IIIIIIII
<b>Low Voltage Mounting Bracket</b>			
9008	New or Old Work Single Gang	100	—
9017	New or Old Work Single Gang	20 Bags**	IIIIIIII
<b>Add-A-Depth Ring Extends Switch Box Set Too Deep in Wall</b>			
976	Adjustment Range 1/4" - 1", Two 1-1/8" Screws Included	25 Bags	IIIIIIII

\*4 Bundles of 25 – sold in carton quantities only \*\*2 Brackets per polybag

CAT. #	DESCRIPTION	FOR RACO® SWITCH BOXES	STD. PKG.	UPC BAR CODE
<b>Switch Box Accessories, Replacement</b>				
961	Plaster Ears - Open Style with Screws	410, 420, 440, 445, 500, 503, 506, 508, 526, 545, 560, 565, 567, 570RAC, 590, 600, 601	100	IIIIIIII
962	Plaster Ears - Clipped Style with Screws	150, 400, 591	100	IIIIIIII
963	Plaster Ears - 1 Screw Style with Screws	471, 487, 517, 518, 519, 523	100	IIIIIIII
964	Old Work GRIPITITE® Clip w/Screws	523	100	IIIIIIII
966	Old Work TIGERGRIP® Clip w/Screws	487, 506, 517	100	IIIIIIII

**NEC CODE 314.20**

- See page A(3) 2008 Standards

**COMPLIANCE**

- File E195973, E195968

**APPLICATION (969)**

- Old work box support clips convert standard switch box to old work type

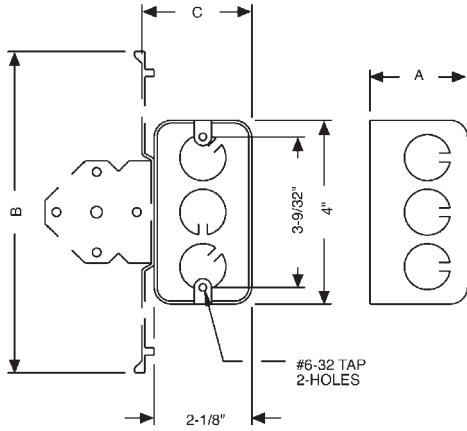
**PRODUCT FEATURE**

- Old work switch box clips for use with 1/2" thick standard drywall



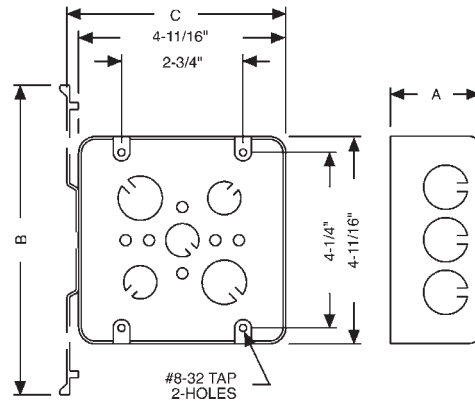
HANDY BOXES AND SWITCH BOXES

HANDY BOXES



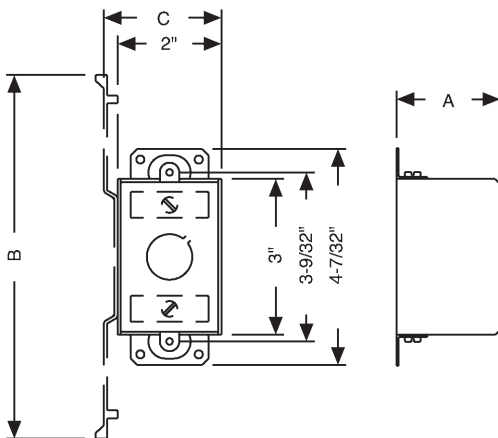
CAT. #	DIMENSIONS		
	A (INSIDE)	B	C
661	1-7/8"	6-7/16"	2-7/32"
662	1-7/8"	7"	2-3/8"
655	1-1/2"	1-31/32"	4-1/8"
670RAC	2-1/8"	-	-
8670	2-1/8"	-	-
674	2-1/8"	-	-
678	2-1/8"	7"	2-3/8"
650, 8650	1-1/2"	-	-
650CSA	1-1/2"	-	-
653	1-1/2"	-	-
660, 8660	1-7/8"	-	-
611	1-7/8"	-	-
660SM	1-7/8"	-	-
663, 8663	1-7/8"	-	-
663SM	1-7/8"	-	-
665	1-7/8"	-	-
671	2-1/8"	6-7/16"	2-7/32"

2-GANG HANDY BOXES / SWITCH BOXES



CAT. #	DIMENSIONS				
	A (INSIDE)	B	C	D	E
680	2-1/8"	4"	4"	-	-
681	2-1/8"	4"	4"	7"	4-9/32"
683	2-1/8"	4"	4"	-	-
685	2-1/8"	4"	4"	7"	4-9/32"

SINGLE GANG AND GANGABLE CONDUIT SWITCH BOXES



CAT. #	DIMENSIONS		
	A (INSIDE)	B	C
400	1-1/2"	-	-
420	2"	-	-
501	2-1/2"	-	-
502	2-1/2"	1-31/32"	4"
503	2-1/2"	-	-
505	2-1/2"	7"	2-13/64"
506	2-1/2"	-	-
508	2-1/2"	-	-
509	2-1/2"	-	-
560	2-3/4"	-	-
561	2-3/4"	-	-
562	2-3/4"	7"	2-13/64"
565	2-3/4"	-	-
591	3-1/2"	-	-
592	3-1/2"	-	-
500, 8500	2-1/2"	-	-
504, 8504	2-1/2"	7"	2-13/64"
590, 8590	3-1/2"	-	-