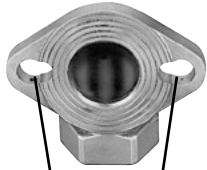
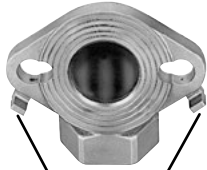


Flanged Meter Couplings

Flanged Ells for 1-1/2" and 2" meters



2" Flanges have slotted bolt holes to fit 1-1/2" meters



Optional Support Brackets (add "-MSB" to catalog number)

CATALOG NUMBER	DESCRIPTION		APPROX. WT. LBS.	STD. PKG. QTY.
METER FLANGE BY FEMALE IRON PIPE THREAD				
LF31-66-NL	1-1/2" Meter Flange	x 1-1/2" Female Iron Pipe	3.7	4
LF31-67-NL	1-1/2" Meter Flange	x 2" Female Iron Pipe	4.2	2
LF31-77-NL	1-1/2" & 2" Meter Flange	x 2" Female Iron Pipe	4.6	3
METER FLANGE BY FLARE COPPER				
LF32-66-NL	1-1/2" Meter Flange	x 1-1/2" Flare Copper	5.1	2
LF32-67-NL	1-1/2" Meter Flange	x 2" Flare Copper	6.8	1
LF32-77-NL	1-1/2" & 2" Meter Flange	x 2" Flare Copper	7.5	1
METER FLANGE BY PACK JOINT FOR COPPER OR PLASTIC TUBING (CTS)				
LF34-66-NL	1-1/2" Meter Flange	x 1-1/2" CTS P.J.	4.3	2
LF34-77-NL	1-1/2" & 2" Meter Flange	x 2" CTS P.J.	6.2	2

Grip Joint for CTS is available. Add "-G" to the catalog number.

For **meter support brackets**, two per flange, add "-MSB" to catalog number.

Lok-Pak Meter Couplings

Lok-Pak Meter Couplings for Flanged Meters



CATALOG NUMBER	DESCRIPTION		APPROX. WT. LBS.	STD. PKG. QTY.
METER FLANGE BY PACK JOINT FOR COPPER OR PLASTIC TUBING (CTS)				
CF34-66-NL	1-1/2" Meter Flange	x 1-1/2" CTS P.J.	3.7	3
CF34-77-NL	2" Meter Flange	x 2" CTS P.J.	4.8	5
METER FLANGE BY PACK JOINT FOR IRON PIPE				
CF35-66-NL	1-1/2" Meter Flange	x 1-1/2" Iron Pipe P.J.	3.6	3
CF35-77-NL	2" Meter Flange	x 2" Iron Pipe P.J.	5.1	3
METER FLANGE BY PACK JOINT FOR PVC PIPE				
CF37-66-NL	1-1/2" Meter Flange	x 1-1/2" PVC Pipe P.J.	4.0	3
CF37-77-NL	2" Meter Flange	x 2" PVC Pipe P.J.	6.0	5

Grip Joint for CTS is available. Add "-G" to the catalog number.

For **meter support brackets**, two per flange, add "-MSB" to catalog number.

Lok-Pak Meter Couplings for Tapped Meters



CATALOG NUMBER	DESCRIPTION		APPROX. WT. LBS.	STD. PKG. QTY.
CONNECTION FOR TAPPED METER BY PACK JOINT FOR COPPER OR PLASTIC TUBING (CTS)				
CT34-66-NL	1-1/2" Tapped Meter Connection	x 1-1/2" CTS P.J.	2.1	4
CT34-77-NL	2" Tapped Meter Connection	x 2" CTS P.J.	3.4	3
CONNECTION FOR TAPPED METER BY PACK JOINT FOR IRON PIPE				
CT35-66-NL	1-1/2" Tapped Meter Connection	x 1-1/2" Iron Pipe P.J.	2.2	4
CT35-77-NL	2" Tapped Meter Connection	x 2" Iron Pipe P.J.	3.3	3

Grip Joint for CTS only is available. Add "-G" to the catalog number.

Gaskets are furnished with all meter couplings, flat drop-in gaskets for flanged meters, flat ring gaskets for tapped meters.

Steel bolts and nuts (5/8" x 2-1/2" zinc plated) for attaching 1-1/2" & 2" flanges and flanged ell are sold separately and are supplied in pairs. (Cat. No. **PSB**)

Meter Flanges



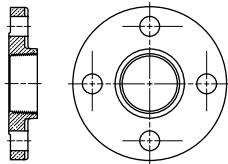
CF33-66S-2-125-NL



Female Iron Pipe



Male Iron Pipe



RF-2I-NL Flange

CATALOG NUMBER	DESCRIPTION	APPROX. WT. LBS.	STD. PKG. QTY.
CF31-66-NL	1-1/2" Meter Flange x 1-1/2" Female Iron Pipe Thread	2.2	8
CF31-67-NL	1-1/2" Meter Flange x 2" Female Iron Pipe Thread	1.9	8
+ CF31-77-NL	2" Meter Flange x 2" Female Iron Pipe Thread	2.8	6
CF31-78-NL	2" Meter Flange x 2-1/2" Female Iron Pipe Thread	3.2	5
CF33-66S-2-125-NL	1-1/2" Meter Flange x 1-1/2" Meter Swivel Nut	7.0	2 pair
CF33-77S-2-25-NL	2" Meter Flange x 2" Meter Swivel Nut	8.5	2 pair
* CF38-66-2-NL	1-1/2" Meter Flange x 1-1/2" Male Iron Pipe Thread	2.4	5
+ CF38-77-1-937-NL	2" Meter Flange x 2" Male Iron Pipe Thread	3.2	3
+ CF38-77-2-125-NL	2" Meter Flange x 2" Male Iron Pipe Thread	3.2	3

* Standard length

+ Slotted bolt holes are available on 2" meter flanges to allow 1-1/2" meter installations.

For meter support brackets, two per flange, add "-MSB" to the catalog number.

Note: Drop-in rubber gaskets are included with all 1-1/2" and 2" meter flanges and flanged ells. Flange couplings are not supplied with bolts. Steel bolts and nuts (5/8" x 2-1/2" zinc plated) for attaching 1-1/2" & 2" flanges and flanged ells are sold separately and are supplied in pairs. (Cat. No. **PSB**)

Four Bolt Round Flange

CATALOG NUMBER	DESCRIPTION	APPROX. WT. LBS.	STD. PKG. QTY.
RF-2I-NL	2" 4-Bolt Meter Flange x 2" Female Iron Pipe Thread	4.4	5

Meter Adapters



A47-NL Adapter



Adapt from 1" to 2" meter with A47-NL Adapter



Adapt from 1" to 5/8" meter with A14-NL Adapter

CATALOG NUMBER	DESCRIPTION - USAGE	APPROX. WT. LBS.	STD. PKG. QTY.
ADAPTER RINGS TO BUSH METER SPUDS (NO CHANGE IN METER LENGTH)			
□ A12S	Pair short adapter rings to bush 5/8" meter spuds to 5/8"x3/4" meter spud size	0.1	100 Pair
□ A12M	Pair medium adapter rings to bush 5/8" meter spuds to 5/8"x3/4" meter spud size	0.1	100 Pair
□ A12L	Pair long adapter rings to bush 5/8" meter spuds to 5/8"x3/4" meter spud size	0.2	75 Pair
□ A34S	Pair short adapter rings to bush 3/4" meter spuds to 1" meter spud size	0.3	50 Pair
□ A45	Pair adapter rings to bush 1" meter spuds to 1-1/4" meter spud size	0.2	35 Pair
ADAPTERS TO CHANGE METER SPUD SIZE AND/OR LENGTH			
A13-NL	Pair adapters to change 5/8" meter to 3/4" meter spud size and length	0.5	35 Pair*
A14-NL	Pair adapters to change 5/8" meter to 1" meter spud size and length	0.8	15 Pair*
A21-NL	One adapter to change 5/8"x3/4" and 3/4" to 5/8" meter spud size	0.3	40 Each*
A23-NL	One adapter to change 5/8"x3/4" meter to 3/4" meter length	0.4	30 Each*
A24-NL	Pair adapters to change 5/8"x3/4" meter to 1" spud size and length	1.1	12 Pair*
A34-NL	Pair adapters to change 3/4" meter to 1" meter spud size and length	0.8	24 Pair*
A44-NL	One adapter to change 3/4"x1" meter to 1" meter length	0.8	16 Each*
A46-NL	Pair adapters to change 1" meter to 1-1/2" flanged meter size and length	4.0	3 Pair*
A47-NL	Pair adapters to change 1" meter to 2" flanged meter size and length	7.1	1 Pair*
A67-NL	Pair adapters to change 1-1/2" flanged meter to 2" flanged meter size and length (eight special length bolts included)	8.7	2 Pair
A77-15-25-NL	Pair adapters to change 2" meter 17" length to 2" meter 15-1/4" length	7.2	2 Pair*
TA46-NL	Pair adapters to change 1" meter to 1-1/2" tapped meter size and length	1.5	8 Pair*
TA47-NL	Pair adapters to change 1" meter to 2" tapped meter size and length	3.0	4 Pair*

□ Brass components that **do not** come in contact with potable water shall be cast of UNS C83600 85-5-5-5 and conform to AWWA Standard C800 (ASTM B62 and ASTM B584).

* Gasket included.

Note: Adapter numbers A21-NL, A23-NL and A44-NL extend the meter length only and therefore only one per meter is required. All other adapters are sold in pairs; the part number and weight reflects a pair.

Meter Idlers



For 5/8" x 3/4" through 1" meters (plastic)



For 5/8" through 1" meters

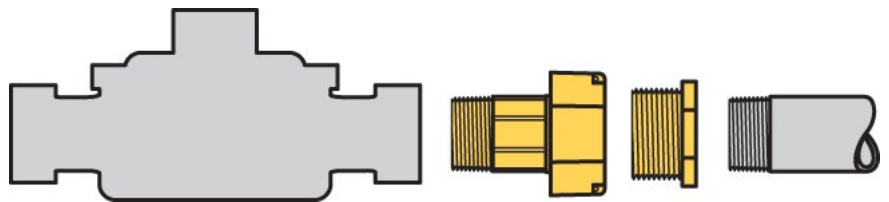


For 1-1/2" through 2" meters

CATALOG NUMBER	DESCRIPTION	APPROX. WT. LBS.	STD. PKG. QTY.
IDLER-1-NL	Replaces 5/8" Meter	0.6	40
IDLER-2-NL	Replaces 5/8"x3/4" Meter	0.9	25
IDLER-2P	Replaces 5/8"x3/4" Meter (plastic)	0.2	25
IDLER-3-NL	Replaces 3/4" Meter	0.9	18
IDLER-3P	Replaces 3/4" Meter (plastic)	0.2	18
IDLER-4-NL	Replaces 1" Meter	1.8	10
IDLER-4P	Replaces 1" Meter (plastic)	0.2	10
IDLER-6-NL	Replaces 1-1/2" Flanged Meter	5.8	4
IDLER-7-NL	Replaces 2" Flanged Meter	10.8	3

Note: Steel bolts and nuts (5/8" x 2-1/2" zinc plated) for attaching 1-1/2" and 2" Flange Lok-Pak couplings, adapters & idlers, must be ordered separately and are supplied in pairs. (Cat. No. **PSB**)

Meter Coupling Bushings



CATALOG NUMBER	DESCRIPTION	APPROX. WT. LBS.	STD. PKG. QTY.
BBIM-33-NL	3/4" Female Iron Pipe Thread x 3/4" Male Meter Thread	0.2	60
BBIM-34-NL	3/4" Female Iron Pipe Thread x 1" Male Meter Thread	0.5	54
BBIM-44-NL	1" Female Iron Pipe Thread x 1" Male Meter Thread	0.4	-
BBIM-66-NL	1-1/2" Female Iron Pipe Thread x 1-1/2" Meter Spud	1.0	15
BBIM-77-NL	2" Female Iron Pipe Thread x 2" Meter Spud	1.4	8

Example: The male iron pipe thread end of a C38-66-2-875-NL threads into an 1-1/2" tapped meter. The female iron pipe thread of a BBIM-66-NL will thread onto the service line. This allows a swivel connection between the swivel nut on the C38-66-2-875-NL and the male meter thread on the BBIM-66-NL.