

1000 RC Series & 5000 RC Series Couplings

The Ultimate Repair Couplings



1000 RC Series
6000 RC Series
 301 series stainless steel
 worm gear clamps

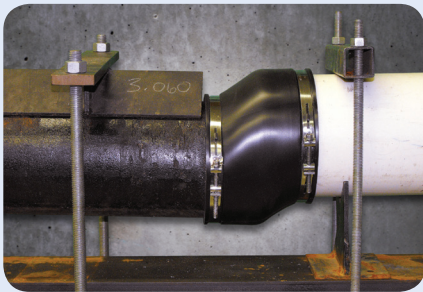


5000 RC Series
 316 series stainless steel
 nut & bolt clamps

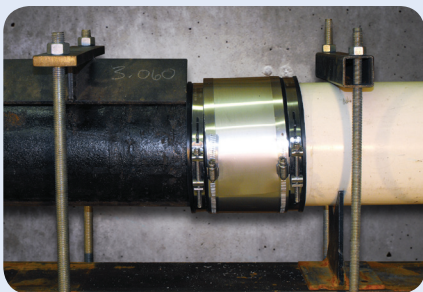


TECHNICAL SPECS

Engineered for resistance to heavy earth loads and shear forces, while providing improved pipe alignment.



Shear Resistance Test using an unshielded sewer coupling per ASTM C 1173 (applied load 50 pounds per nominal inch of pipe diameter)



Shear Resistance Test using a Fernco Repair Coupling per ASTM C 1173 (applied load 50 pounds per nominal inch of pipe diameter)

Gasket

- Manufactured to meet the material requirements of:
 - CSA B602 - mechanical couplings for drain, waste, vent pipe and sewer pipe
 - ASTM D 5926 - Standard Specification for Poly Vinyl Chloride (PVC) Gaskets for Drain, Waste, and Vent (DWV), Sewer, Sanitary, and Storm Plumbing Systems
 - ASTM C 1173 - Standard Specification for Flexible Transition Couplings for Underground Piping Systems
- Hardness, Shore "A", Inst. +5.....65
- Tensile Strength, Min. psi1000
- Elongation at Rupture, Min. %.....250
- Tear Strength, Min.....150 lb/in.
- Brittleness Temperature.....-40°F

Worm Gear Clamps - 1000 Series

- Clamp Housing- 301 Stainless Steel
- Clamp Band - 301 Stainless Steel
- Clamp Screw - 305 Stainless Steel
- Installation torque 60 in-lbs

Nut & Bolt Clamps - 5000 Series

- Clamp Band - 316 Stainless Steel
- 6" and larger couplings incorporate two nut and bolt take-up points per band
- Installation torque 60 in-lbs

NEW 6000 RC Series

- American Iron and Steel (AIS) compliant

Shear Ring

- .012" Thick, 300 Series Stainless Steel
- Width manufactured according to coupling width (1.50", 2.13", or 4")
- Length manufactured according to coupling diameter
- Clamps spot welded in place

Coupling

- Manufactured to conform to the performance requirements of:
 - ASTM C 1173 - standard specification for flexible transition couplings for underground piping systems



United States
 PH: 810-503-9000
 FX: 810-503-1015

www.fernco.com

Canada
 PH: 519-332-6711
 FX: 519-332-8610

1001 & 5001 RC Series - Clay to Clay

1000 RC SERIES	5000 RC SERIES	A	in	mm	B	in	mm	C	in	mm
1001-44RC	5001-44RC	5.29		134	5.29		134	4.10		104
1001-44WCRC	5001-44WCRC	5.51		140	5.51		140	3.97		101
1001-64RC*	5001-64RC	7.50		191	5.50		140	6.02		153
1001-66RC	5001-66RC	7.50		191	7.50		191	6.02		153
1001-66WCRC	5001-66WCRC	8.00		203	8.00		203	6.00		152
1001-88RC	5001-88RC	9.65		245	9.65		245	5.99		152
1001-88WCRC	5001-88WCRC	10.00		254	10.00		254	6.00		152
1001-1010RC	5001-1010RC	12.40		315	12.40		315	5.90		150
1001-1010WCRC	5001-1010WCRC	12.40		315	12.40		315	5.90		150
1001-1212RC	5001-1212RC	14.51		369	14.51		369	6.38		162
1001-1212WCRC	N/A	15.25		387	15.25		387	6.42		163
1001-1515RC	5001-1515RC	18.14		461	18.14		461	9.89		251
1001-1818RC	5001-1818RC	21.90		556	21.90		556	9.63		245
1001-2424RC	N/A	28.97		736	28.97		736	9.89		251

1002 & 5002 RC Series - Clay to Cast Iron or Plastic

1000 RC SERIES	5000 RC SERIES	A	in	mm	B	in	mm	C	in	mm
1002-43RC*	5002-44RC	5.29		134	3.38		86	4.10		104
1002-44RC	5002-44WCRC	5.36		136	4.51		115	4.07		103
1002-44WCRC	N/A	5.44		138	4.55		116	3.96		101
1002-46RC*	5002-46RC	5.13		130	6.60		168	5.74		146
1002-55RC*	5002-55RC	6.60		168	5.50		140	5.74		146
1002-64RC*	5002-64RC	7.50		191	4.50		114	6.02		153
1002-64WCRC*	5002-64WCRC	8.00		203	4.50		116	6.00		152
1002-64WCRC-SDR*	5002-66RC	8.00		203	4.38		111	6.00		152
1002-66RC	5002-66WCRC	7.50		191	6.56		167	5.89		150
1002-66WCRC	5002-86RC	8.04		204	6.38		162	5.91		150
1002-88RC	5002-88RC	9.76		248	8.57		218	5.96		151
1002-88WCRC	5002-88WCRC	10.00		254	8.66		220	6.00		152
1002-1010RC*	5002-1010RC	12.40		315	10.75		273	5.90		150
1002-1010WCRC*	5002-1010WCRC	12.40		315	10.75		273	5.90		150
1002-1210RC*	N/A	14.51		369	10.60		269	6.00		152
1002-1212RC*	5002-1212RC	14.51		369	12.60		320	6.38		162
1002-1212WCRC*	N/A	15.25		387	12.60		320	6.42		163
1002-1215RC*	N/A	14.38		365	15.25		387	6.42		163
1002-1515RC*	5002-1515RC	18.14		461	15.40		391	9.89		251
1002-1818RC*	5002-1818RC	21.90		556	19.00		483	9.63		245
1002-2121RC*	N/A	25.46		647	22.30		566	9.89		251
1002-2424RC*	N/A	28.97		736	25.00		635	9.89		251

1003 & 5003 RC Series - Clay to AC or Ductile Iron

1000 RC SERIES	5000 RC SERIES	A	in	mm	B	in	mm	C	in	mm
1003-44RC	5003-44RC	5.41		137	4.94		125	4.07		103
1003-66RC	5003-66RC	7.25		184	6.84		174	5.93		151
1003-66WCRC*	N/A	8.00		203	6.80		173	6.00		152
1003-68RC*	N/A	7.20		183	9.05		230	5.98		152
1003-8-10RC*	N/A	9.65		245	11.22		285	5.97		152
1003-88RC	5003-88RC	9.75		248	9.06		230	5.94		151
1003-1010RC*	N/A	12.40		315	11.12		282	5.90		150
1003-1212RC*	5003-1212RC	14.51		369	13.20		335	6.38		162
N/A	5003-1516RC	18.10		460	18.10		460	9.89		251
1003-1818RC*	N/A	21.90		556	19.50		495	9.63		245

1004 & 5004 RC Series - Concrete to Concrete

1000 RC SERIES	5000 RC SERIES	A	in	mm	B	in	mm	C	in	mm
1004-44RC	5004-44RC	5.51		140	5.51		140	3.97		101
1004-66RC	5004-66RC	7.58		193	7.58		193	5.94		151
1004-88RC	5004-88RC	10.38		264	10.38		264	5.90		150

1004-1010RC	5004-1010RC	12.40		315	12.40		315	5.90		150
1004-1212RC	5004-1212RC	15.25		387	15.25		387	6.42		163
N/A	5004-1212LCRC	15.25		387	15.25		387	6.42		163
1004-1515RC	N/A	19.74		501	19.74		501	9.89		251

1006 & 5006 RC Series - Concrete to Cast Iron or Plastic

1000 RC SERIES	5000 RC SERIES	A	in	mm	B	in	mm	C	in	mm
1006-44RC*	5006-44RC	5.64		143	4.51		115	3.97		101
1006-64RC*	N/A	7.58		193	4.38		111	5.94		151
1006-66RC*	5006-66RC	7.63		194	6.63		168	5.94		151
1006-86RC*	N/A	10.38		264	6.38		162	5.90		150
1006-88RC*	5006-88RC	10.49		266	8.63		219	5.90		150
1006-1010RC*	5006-1010RC	12.40		315	10.75		273	5.90		150
1006-1212RC*	5006-1212RC	15.25		387	12.60		320	6.42		163
1006-1515RC*	N/A	19.74		501	15.40		391	9.89		251

1051 & 5051 RC Series - AC or Ductile Iron to Cast Iron or Plastic

1000 RC SERIES	5000 RC SERIES	A	in	mm	B	in	mm	C	in	mm
1051-44RC	5051-44RC	4.80		122	4.39		112	3.94		100
1051-45RC*	N/A	5.00		127	5.52		140	3.97		101
1051-46RC*	5051-46RC	4.75		121	6.60		168	5.74		146
1051-55RC*	N/A	5.90		150	5.50		140	5.92		150
1051-64RC*	5051-64RC	6.95		177	4.38		111	5.92		150
1051-65RC*	N/A	6.95		177	5.50		140	5.92		150
1051-66RC	5051-66RC	6.69		177	6.69		170	5.91		150
1051-8-10RC*	N/A	9.05		230	10.63		270	5.89		150
1051-88RC	5051-88RC	9.25		235	8.51		216	5.97		152
1051-10-8RC*	N/A	11.02		280	8.38		213	5.97		152
N/A	5051-1010RC	11.02		280	10.52		267	5.85		148
1051-1212RC*	5051-1212RC	13.37		340	12.60		320	5.97		152
N/A	5051-1615RC	18.14		461	15.40		391	9.89		251
1051-1818RC	N/A	19.74		501	19.74		501	9.89		251

1055 & 5055 RC Series - AC or Ductile Iron to AC or Ductile Iron

1000 RC SERIES	5000 RC SERIES	A	in	mm	B	in	mm	C	in	mm
1055-44RC	5055-44RC	4.75		121	4.75		121	3.96		101
1055-66RC	5055-66RC	6.65		169	6.65		169	5.92		150
1055-88RC	5055-88RC	9.05		230	9.05		230	5.98		152
1055-1212RC	5055-1212RC	13.37		340	13.37		340	5.97		152

1056 RC Series - Cast Iron, Plastic, Copper, Steel or Lead

1000 RC SERIES	5000 RC SERIES	A	in	mm	B	in	mm	C	in	mm
1056-150RC	N/A	1.94		49	1.94		49	3.43		87
1056-22RC	N/A	2.41		61	2.41		61	3.45		88
1056-32RC*	N/A	3.52		89	2.38		60	3.96		101
1056-33RC	N/A	3.46		88	3.46		88	3.98		101
1056-43RC*	5056-43RC	4.58		116	3.38		86	4.02		102
1056-44RC	5056-44RC	4.58		116	4.58		116	4.02		102
1056-54RC*	5056-54RC	5.52		140	4.38		111	3.97		101
1056-55RC	5056-55RC	5.52		140	5.52		140	3.97		101
1056-64RC*	5056-64RC	6.60		168	4.50		114	5.74		146
1056-65RC*	N/A	6.60		168	5.62		143	5.74		146
1056-66RC	5056-66RC	6.60		168	6.60		168	5.74		146
1056-86RC*	N/A	8.64		219	6.63		162	6.04		153
1056-88RC	5056-88RC	8.64		219	8.64		219	6.04		153
1056-1010RC	5056-1010RC	10.63		270	10.63		270	5.89		150
1056-1212RC	5056-1212RC	12.52		318	12.52		318	6.32		161
1056-1515RC	5056-1515RC	15.92		404	15.92		404	9.89		251
1056-1818RC	5056-1818RC	19.10		485	19.10		485	9.89		251
N/A	5056-2424RC	25.10		638	25.10		638	9.89		251