

Cables and Leaders

	Catalog No.	Model No.	Description	Weight	
				lb.	kg
7/8" = 22 mm	62275	C-10	7/8" (22 m) x 15' (4,6 m) All- Purpose Wind Requires A-368-X Jawset	9 1/2	4.3
	25036	C-10 PC	7/8" (22 mm) x 15' Cable with Inner Core (4,6 m) Requires A-368-X Jawset	10	4.5
	30007	T-127	7/8" (22 mm) Trap Leader	2	0.9
5/8" = 16 mm	51317	C-9	5/8" (16 mm) x 10' (3,1 m) Heavy-Duty Wind	5	2.2
	62270	C-8	5/8" (16 mm) x 7 1/2' (2,3 m) All-Purpose Wind	3	1.4
	62265	C-7	5/8" (16 mm) x 7 1/2' (2,3 m) Tight-Wind	4	1.8

Cable Kits and Tool Kits

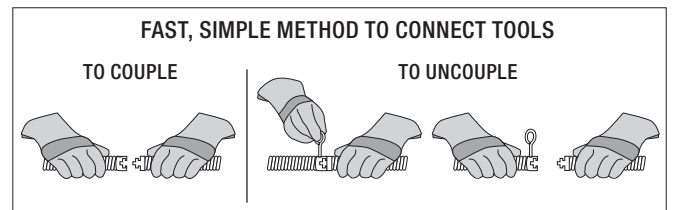
	Catalog No.	Model No.	Description	Weight	
				lb.	kg
	61625	A-62	Standard Equipment Tool Kit for K-60-SE, includes: -T-101 Straight Auger -T-102 Funnel Auger -T-107 Spade Cutter -T-125 Retriving Auger -T-150-1 Sharktooth Cutter -A-3 Tool Box -A-12 Pin Key	43	19.5
	61630	A-61	Standard Equipment Cable Kit for K-60-SE, includes: - Five Sections C-10, 7/8" (22 mm) x 15' (4,6 m) Cable - A-8 Cable Carrier	8	3.6
	48472	A-35	5/8" Cable Kit, includes: Six Sections C-8, 5/8" x 7 1/2" Cable (45', 14m), A-10 Cable Carrier, T-201 Straight Auger, T-202 Bulb Auger, T-205 "C" Cutter, T-211 Spade Cutter, A-13 Coupling Pin Key	18	8.2
	48477	A-35TW	5/8" Tight-Wind Cable Kit, Substitutes C-7 For C-8 In, Above Package	-	-
	59365	A-30	Six Sections: C-8, 5/8"x7 1/2" (45', 13,7 m)	20	9.1
	94492	A-25	5/8" (16 mm) Cable Kit, includes: Five Sections C-8, 5/8" (16 mm) x 7 1/2" (2,3 m) Cable 37.5' (11,5 m) -A-10 Cable Carrier -T-201 Straight Auger -T-202 Bulb Auger -T-205 "C" Cutter -A-13 Coupling Pin Key	18	8.2

Accessories

	Catalog No.	Model No.	Description	Weight	
				lb.	kg
	59360	A-3	Tool Box	5	2.3
	59205	A-1	Left-Hand RIDGID Drain Cleaning Mitt	1/2	0.2
	59295	A-2	Right-Hand RIDGID Drain Cleaning Mitt		
	59230	A-13	3/8" Cable Pin Key		
	59225	A-12	1/2" Cable Pin Key	1/2	0.2
	61615	A-60-12	12' (3,7 m) Rear Guide Hose For K-60	12	5.5
	76575	A-60-16	16' (4,9 m) Rear Guide Hose For K-60	15 1/2	7.0
	59425	A-36	Cable Caddy	15	6.8
	59210	A-10	Cable Carrier Holds 90' (27 m) C-8, C-9	3 1/4	1.5
	59470	A-8	Cable Carrier 60' (18 m) Capacity 1 1/4" (32 mm)	5 1/2	2.5
	59445	A-5	Grease Gun	1/2	0.2
	65687		Clutch Jaw	3/4	0.3

Tools - Fits 7/8" Sectional Cables

	Catalog No.	Model No.	Description	Replac. Blade(s)
	62850	T-101	Straight Auger	
	62855	T-102	Funnel Auger	-
	27642	T-125	Straight Retrieving Auger	
	62860	T-103	Sawtooth Cutter, 2 1/2" (65 mm)	98070
	62865	T-104	"H" Cutter, 2 1/2" (65 mm)	97800
	62870	T-105	Grease Cutter, 2 1/2" (65 mm)	97920
	62875	T-106	Grease Cutter, 3 1/2" (87 mm)	97925
	62915	T-109	Spiral Sawtooth Cutter, 1 1/2" (45 mm)	97930
	62920	T-110	Spiral Sawtooth Cutter, 2 1/4" (57 mm)	97935
	62925	T-111	Spiral Sawtooth Cutter, 3" (75 mm)	92890
	62930	T-112	4-Blade Cutter, 1 3/4" (45 mm)	97915
	62935	T-113	4-Blade Cutter, 3" (75 mm)	97910
	62940	T-114	Chain Knocker for 4" lines	97985
	98050	T-150	Sharktooth Cutter 3" (75 mm) and 4" (110 mm)	-
	98055	T-150-1	Sharktooth Cutter 3" (75 mm) Blade	98005- 3" (75mm)/ 98010- 3" (100mm)
	98060	T-150-2	Sharktooth Cutter 4" (110 mm) Blade	98010
	62880	T-107	Spade Cutter, 1 3/4" (45 mm)	92850
	54842	T-141	Knife Blade Cutter 1 1/2" (40 mm)	54847
	54852	T-142	Knife Blade Cutter 2 1/2" (65 mm)	97800



For C-4, C-6, C-7, C-8, C-9, C-10, C-11, C-12, C-14, C-15, C-31, C-32, C-33, C-44, C-45, and C-46.