



**Design features:**

- All Mustee basins are one-piece molded from high impact resistant DURASTONE® structural fiberglass (24" x 36")
- Elevated, self-draining shelf and removable strainer
- Integral, molded-in drain for connection to 3" ABS, PVC (Sch. 80) or cast iron
- Available drain seals for connection to 2" pipe or 3" soil pipe
- Complete range of accessories to meet specific application needs
- Colorfast marbled white finish
- Easy to install

**Code Accepted**

Mustee Mop Service Basins meet or exceed performance requirements as listed:

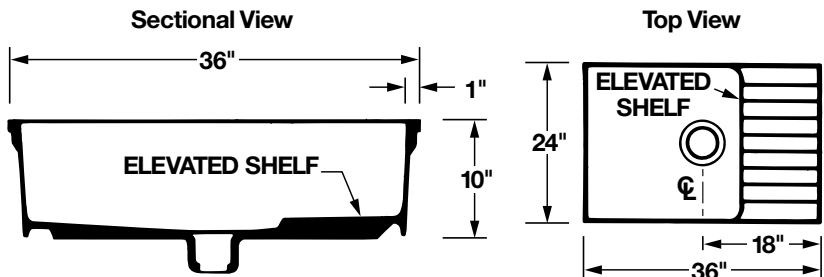
- International Association of Plumbing and Mechanical Officials (IAPMO)® Listed
- Warnock Hersey® (Canada) Listed—CSA test standards: Mop Basins - #B45.0
- American National Standards Institute (ANSI)-Specification Z 124-2011
- American Society of Testing and Materials (ASTM) D 635 E 84 and E 162
- CAN/ULC S102-07 Burn and Smoke Test



**Specifications**

| Model Number | Color | H x W x D       | UPC             |
|--------------|-------|-----------------|-----------------|
| 65M          | White | 10" x 36" x 24" | 6 71031 00194 8 |

**General:** Furnish and install as shown on plans, Mop Service Basin model 65M, as manufactured by E.L. Mustee & Sons, Inc. Unit to be one-piece molded fiberglass made with matched metal molds using extreme heat and pressure. Height shall be 10" with not less than 1" wide shoulder. Size 24" x 36" with integrally molded, self-draining shelf. Drain shall be integrally molded, complete with drain seal for installation of 3" ABS, PVC (Sch. #80) and iron pipe. Removable stainless steel strainer. Performance tested to meet or exceed ANSI Z 124-2011 and FHA/HUD UM-73. Weight 62 lbs., cubic feet 7.0. Install in compliance with local codes.

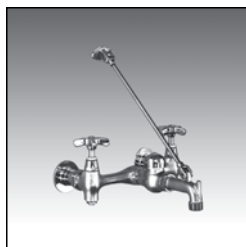


E.L. Mustee & Sons, Inc. • 5431 West 164th Street • Brook Park, OH 44142 • Phone: 216.267.3100 • Fax: 216.267.9997  
E-mail: info@mustee.com • Web: www.mustee.com • Proudly made in the USA

Notice: Our continuous commitment to product improvement may result in changes to product specifications without notice. Patents pending. Made and Printed in U.S.A.



▶ **Service Faucet**



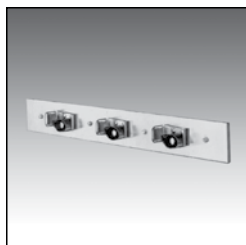
| Model No.                                                                                                | UPC             |
|----------------------------------------------------------------------------------------------------------|-----------------|
| 63.600A                                                                                                  | 6 71031 00277 8 |
| Heavy duty, chrome plated brass dual handle sink faucet with top reinforcing bar and pail hook on spout. |                 |

▶ **Hose and Hose Holder**



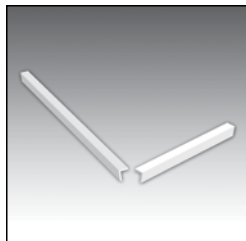
| Model No.                                                                                                                                                       | UPC             |
|-----------------------------------------------------------------------------------------------------------------------------------------------------------------|-----------------|
| 65.700                                                                                                                                                          | 6 71031 00196 2 |
| Heavy duty 5/8" dia. reinforced 31" rubber hose with brass couplings on one end. Spring loaded, molded rubber hose holder mounts on stainless steel wall plate. |                 |

▶ **Mop Hanger**



| Model No.                                                                                                             | UPC             |
|-----------------------------------------------------------------------------------------------------------------------|-----------------|
| 65.600                                                                                                                | 6 71031 00195 5 |
| Three spring-loaded rubber holders mounted to a 3" x 24" stainless steel wall plate. Click here for more information. |                 |

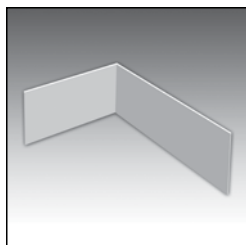
▶ **Bumper Guards**



Available in high impact resistant molded vinyl (3 versions) or stainless steel (2 versions).

| Model No.                          | UPC             |
|------------------------------------|-----------------|
| <b>High Impact-resistant vinyl</b> |                 |
| 63.401 20-3/4" Long                | 6 71031 00290 7 |
| 65.403 32-3/4" Long                | 6 71031 00291 4 |
| <b>Stainless steel</b>             |                 |
| 63.403 20-3/4" Long                | 6 71031 00409 3 |
| 65.404 32-3/4" Long                | 6 71031 00410 3 |

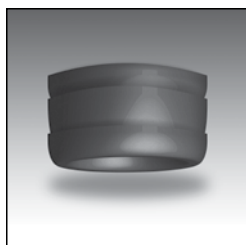
▶ **DURAGUARD™ Wall Guards**



Protects wall surfaces from splashing and damage from impacts, 12" height, 20 gauge #304 stainless steel.

| Model No.                                         | UPC             |
|---------------------------------------------------|-----------------|
| 67.2436 Two panels & bracket for 24" x 36" corner | 6 71031 00294 5 |
| 67.24C One panel & corner bracket                 | 6 71031 00295 2 |
| 67.36C One panel & corner bracket                 | 6 71031 00296 9 |

▶ **Optional Seals**



For installations with the following pipe connections:

| Model No.                                              | UPC             |
|--------------------------------------------------------|-----------------|
| 65.308 For 2" PVC, ABS and iron                        | 6 71031 00303 4 |
| 65.309 For 3" PVC, ABS and iron,(Included w/mop basin) | 6 71031 00304 1 |
| 65.311 For 3" soil pipe (No-Hub)                       | 6 71031 00305 8 |

