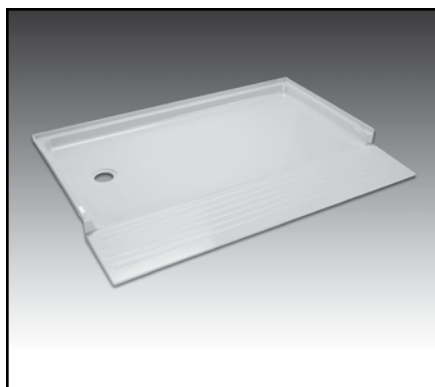




MUSTEE
Preferred by the "Pros"

CareGiver® 360 Barrier-Free Shower Floor with 360.100 Entry Ramp

SEE PAGES 2-5 FOR A LIST OF ACCESSORIES!



Design features:

- Produced from high-grade, reinforced, molded fiberglass for optimum strength and impact resistance using matched metal molds under heat and pressure.
- Ideal for new or remodel projects...fits DURAWALL® Shower Walls (see Accessories section) as well as ceramic tile or preformed wall kit.
- Fits 60" wide by 30" deep alcove.
- Drain hole is offset 8-1/2" x 15" for connection to 2" DWV piping.
- 360.100 Entry Ramp (order separately) creates curbless entry and exit for wheelchairs and walkers.
- Slip resistant surface.
- Optional drain kit is available for connecting to existing 1-1/2" bathtub DWV line.
- Available in both LH and RH drain locations.
- Available in white or bone.
- Smooth, colorfast semi-gloss finish, resists scuffs.
- Mold and mildew-resistant...easy to clean.

Code Accepted

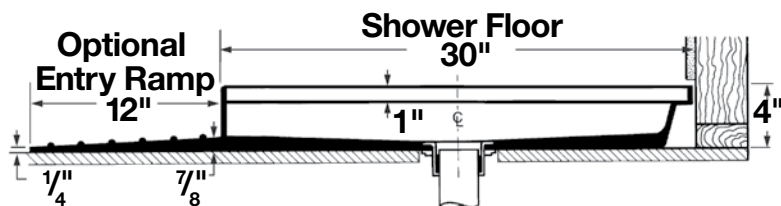
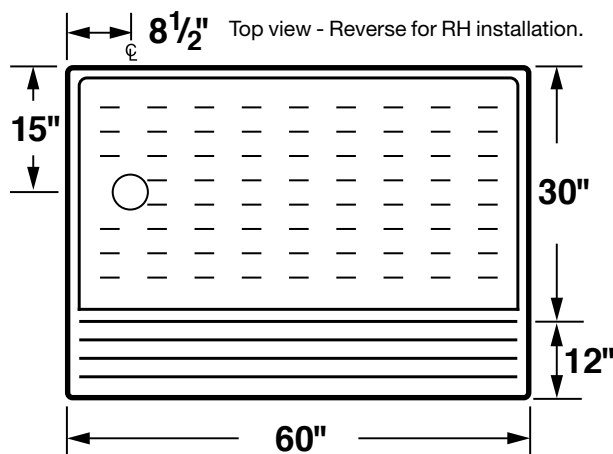
- Americans with Disabilities Act (ADA)
- Code of Federal Regulations: July 1, 1997 (ADA)
- American Society of Testing & Materials (ASTM)-D635 Flammability, E84 Flame Spread, E165.75 Fire Retardancy

Specifications

Model	Description	Drain Location	Fits Alcove	UPC
Barrier-Free Shower Floor				
360R	White	RH	30" x 60"	6 71031 00271 6
360RBN	Bone	RH	30" x 60"	6 71031 00272 3
360L	White	LH	30" x 60"	6 71031 00273 0
360LBN	Bone	LH	30" x 60"	6 71031 00274 7
Entry Ramp (Order separately) 12" deep x 60" wide				
360.100	White	—	—	6 71031 00275 4
360.100BN	Bone	—	—	6 71031 00276 1

General: Furnish and install as shown on plans, barrier-free DURABASE® Shower Floor Model 360 and Entry Ramp model _____ (360.100, 360.100BN) as manufactured by E.L. Mustee & Sons, Inc. Shower floor to be one-piece, molded fiberglass, using matched metal molds under extreme heat and pressure. Surface to be slip-resistant design that does not interfere with flow of water. Size: 30" x 60". Shoulder will be not less than 3-1/16" high or less than 1-1/4" wide. Tiling flange will extend not less than 1" higher than shoulder. Shower floors shall not have curb used in conjunction with 12" x 60" entry ramp per ADA requirements. Drain available on right or left side, offset 8-1/2" x 15". Shall meet ANSI Z 124-2011.2 1990. Color ____ (White, Bone). Install in compliance with local codes.

General: Furnish and install as shown on plans Shower Floor Entry Ramp model: _____, as manufactured by E.L. Mustee & Sons, Inc. Ramp to be one piece, molded fiberglass made with matched metal molds. Slip resistant surface. Trimmable to accommodate for a nearby toilet or other structure. Size 12" x 60". Color: ____ (White, Bone)



MUSTEE

E.L. Mustee & Sons, Inc. • 5431 West 164th Street • Brook Park, OH 44142 • Phone: 216.267.3100 • Fax: 216.267.9997
E-mail: info@mustee.com • Web: www.mustee.com • Proudly made in the USA

Notice: Our continuous commitment to product improvement may result in changes to product specifications without notice. Patents pending. Made and Printed in U.S.A.



▶ DURAWALL® Shower Walls

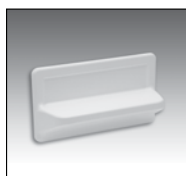
Mustee offers several premium-quality VARISTONE® fiberglass and DURAWALL® thermoplastic shower walls to best fit the needs of your Model 360 ShowerTub™ Easy Access Shower Floor application.

572T VARISTONE™ — FIBERGLASS, 5-PANEL RECTANGULAR SHOWER WALLS, ADHESIVE MOUNT



Model No.	Description	UPC
572TWH	Widths to 60", depths to 34"	6 71031 00420 8
572TBN	Widths to 60", depths to 34"	6 71031 00421 5

Optional 572.300 VARISTONE® Shelves



Expressly produced to color match the finishes available for Mustee's Model 572T shower walls, VARISTONE® shelves adhesive mount to the walls in any desired position or arrangement to best meet your needs.

Model No.	Color	UPC
572.300	White	6 71031 00385 0
572.300BN	Bone	6 71031 00386 7

760T-30WHT DURAWALL® — PREMIUM FIBERGLASS, 5-PANEL RECTANGULAR SHOWER WALLS, DIRECT-TO-STUD MOUNT



Model No.	Description	UPC
760T-30WHT	Widths to 60", depths to 30"	—

To create a shelf at any location on this shower surround, purchase the optional 572.300 VARISTONE® shelf...see product description directly above.

260 DURAWALL® — THERMOPLASTIC, 5-PANEL RECTANGULAR SHOWER WALLS, ADHESIVE MOUNT



Model No.	Description	UPC
260WHT	Widths to 60", depths to 40"	6 71031 00053 8
260BN	Widths to 60", depths to 40"	6 71031 00050 7

265 DURAWALL® — THERMOPLASTIC, 5-PANEL RECTANGULAR SHOWER WALLS, ADHESIVE MOUNT



Model No.	Description	UPC
265WHT	Widths to 71", depths to 41-1/2"	6 71031 00478 9

