

Specifications

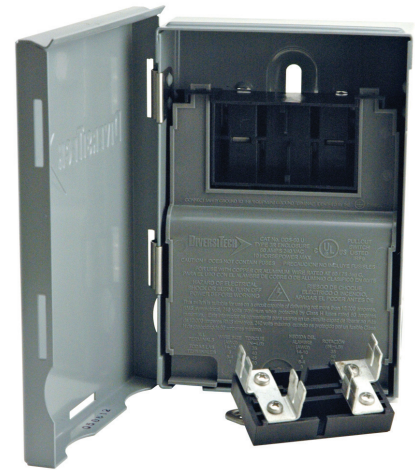
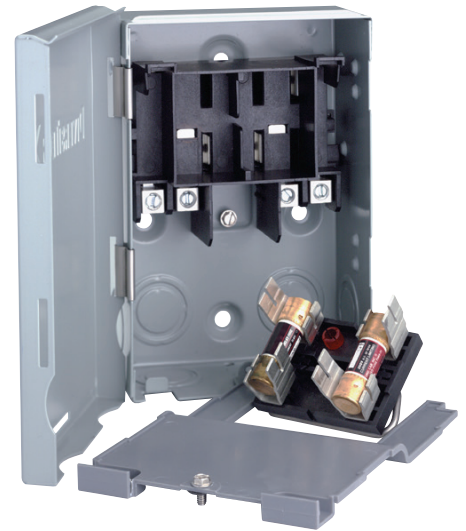
Product	DiversiTech Pull-out Disconnect Switches: DDS-30, DDS-60 (fusible), DDS-60U and EDS-60U (non-fusible)
Application	HVAC circuitry
Power Rating	30A (DDS-30) or 60A at 240VAC, 10 horsepower max
Indoor/Outdoor Use	indoor/outdoor
Package Medium	Metal case with 180 degree opening door
Advantages	Convenient design allows for easy access to controls via wide-opening, reversible door with full dead front. Fused models benefit from having fuses located in easy pull-out handle with indicator lights for blown fuses. Line, load, and ground terminals aligned for easy wiring. EDS-60U Low-profile model also available for tighter spaces.
Directions	Please refer to an electronic copy of this product's brochure at www.diversitech.com/literature/lit-fly-disc.pdf
HAZMAT Hazard	None.

Package Metrics

Producer of Goods	DiversiTech
Domestic/Foreign Commodity	Foreign

SKU Specific Package Metrics

UPC	DDS-30 - 095247082445 DDS-60 - 095247082452 DDS-60U - 095247082421 EDS-60U - 095247089420
Unit Dimensions	DDS-30 - 2-5/8"L x 5"W x 7-1/2"H DDS-60 - 2-3/4"L x 5-1/8"W x 8-5/8"H DDS-60U - 2-3/8"L x 5"W x 7-1/2"H EDS-60U - 2-1/2"L x 4.8"W x 6.3"H
Unit Weight	DDS-30 - 2.7 lbs. DDS-60 - 3.3 lbs. DDS-60U - 2.5 lbs. EDS-60U - N/A
Case Dimensions	DDS-30 - 14"L x 11"W x 8-1/4"H DDS-60 - 16"L x 11"W x 9-1/4"H DDS-60U - 13"L x 11"W x 8-1/4"H EDS-60U - N/A
Case Weight	DDS-30 - 28.6 lbs. DDS-60 - 33.7 lbs. DDS-60U - 26.6 lbs. EDS-60U - N/A
Quantity per Package	10



Pull-out Disconnect Switches