

## Specifications

**Product** SpeediChannel™

**Application** Air conditioning line sets

**Purpose** DiversiTech SpeediChannel™ is a system used to cover line sets, drain lines, and control cables when they can not be installed inside a wall.

**Composition** U.V. inhibited virgin resin

**Advantages** SpeediChannel™ is the perfect universal installation system - combining high quality resins in a paintable natural color easily adapted to any colored mounting, and SpeediClip™, a unique sliding rail system that makes line set installation a one man job. DiversiTech SpeediChannel™ is easier to inventory, transport and install than competing brands, and the flat pack design reduces warehouse storage and contractor transport space. Tight fit corner design & installation accessories deliver the contractor a clean install every time.

**Colorfast Stability** The stability of the color of the Product is such that after **5 years** external exposure in the climate zone defined within following paragraph, the contrast on the Grey scale according to ISO EN 105 A02 of the finished goods made from the Product will not be below **level 3**, when compared to an unexposed control sample of the same grade.

This statement is limited to the climate zones where the annual global irradiation is less than **100,000 Langley's : Northern European climate.**

**Hardware** Stainless steel

**Unique Pieces**

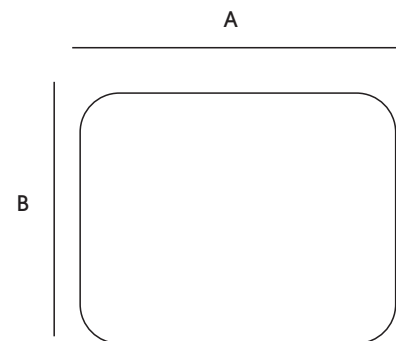
- Flat wall escutcheon
- Integrated flex joint
- Long radius 90o flat elbow
- 20mm drain line with double connections
- True "Y" connection

**Sleeve Style** Single peice

**Certification** UL recognized in the US and Canada



**230-D3**



## Package Metrics

**Producer of Goods** DiversiTech

**Domestic/Foreign Commodity** Foreign

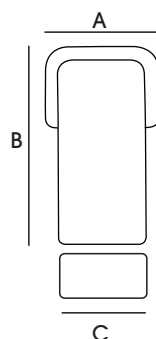
Code*	Channel Dimension		Overall Length
	A	B	C
230-D3	2.75 in	2.55 in	78.74 in
230-D4	4.13 in	2.95 in	78.74 in
230-D6	5.9 in	3.14 in	78.74 in

## Specifications

### Wall Penetration

- Ivory colour/U.V. resistant
- Packed each separately in plastic film

	A	B	C
230-WC3	4.33 in	7.08 in	2.77 in
230-WC4	5.7 in	7.48 in	4.14 in
230-WC6	6.29 in	7.87 in	5.92 in

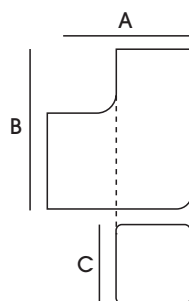


230-WC3

### 90° Flat Bend

- Ivory colour/U.V. resistant
- Packed each separately in plastic film

	A	B	C
230-FB3	4.33 in	4.52 in	2.77 in
230-FB4	5.9 in	5.9 in	4.14 in
230-FB6	6.69 in	6.69 in	5.92 in

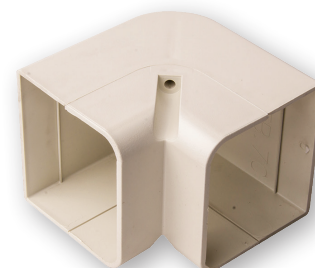
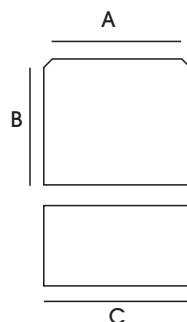


230-FB3

### 90° Elbow Bend

- Ivory colour/U.V. resistant
- Packed each separately in plastic film
- To place inside the internal corner

	A	B	C
230-EB3	3.74 in	3.74 in	2.7 in
230-EB4	4.33 in	4.33 in	4.14 in
230-EB6	6.1 in	6.1 in	5.92 in

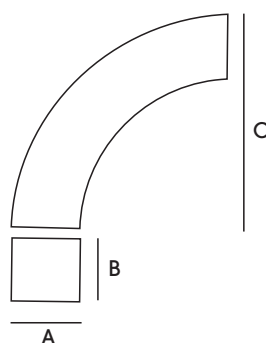


230-EB3

### 90° Long Flat Elbow

- Ivory colour/U.V. resistant
- Packed each separately in plastic film
- Ideal for copper bending with a wider radius application

	A	B	C
230-LFB3	2.96 in	2.77 in	9.84 in
230-LFB4	4.34 in	3.16 in	9.84 in
230-LFB6	6.11 in	3.36 in	9.84 in



230-LFB4