

For Residential and Commercial Applications

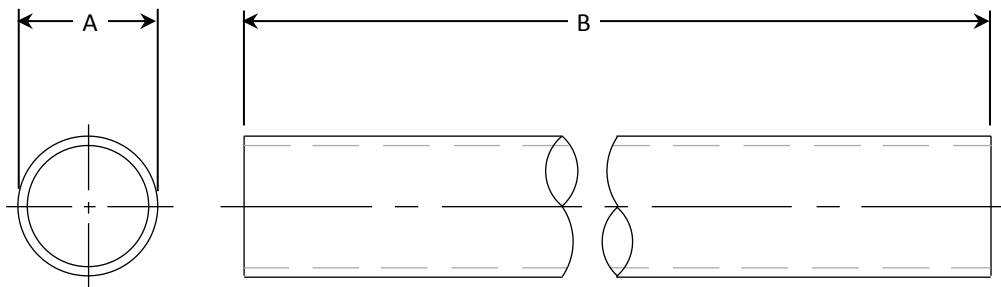
| | | | |
|----------------|--|----------------------|--|
| Job Name | | Engineer / Architect | |
| Job Location | | Wholesaler | |
| Submittal Date | | Contractor | |

1-12 / 1-72 Copper Tubing – Dead Soft

Uses: For use in potable water distribution in accessible locations only.

Design Features:

- One-piece construction
- 100% Compliant product



Operating Specifications:

Temperature: 40° - 140° F

Pressure: 125 PSI maximum

| MATERIAL SPECIFICATIONS | |
|-------------------------|-----------------------|
| Tube | Copper, chrome plated |

| PART DIMENSIONS (Inches) | | | |
|--------------------------|--------|--------|------|
| Model | DIA. A | DIM. B | WALL |
| 1-12 | .375 | 12.00 | .025 |
| 1-72 | .375 | 72.00 | .025 |

Part Listing:

- 1-12 C 3/8" OD x 12" long slip tube, chrome plated
- 1-72 C 3/8" OD x 72" long slip tube, chrome plated

Listings & Certifications:

- Compliant product CSA listed to Low Lead Content Certification Program – Plumbing Products Class 6853-01



This specification and all information contained herein is the confidential and exclusive property of BrassCraft Manufacturing, and shall not be disclosed to others without the written consent of BrassCraft Mfg. This specification must be returned to BrassCraft Mfg if requested.

