

Catalog Number	
Notes	Type

## FEATURES & SPECIFICATIONS

### INTENDED USE

For building mount.

### CONSTRUCTION

Body is galvanized steel tube (per ASTM A-123) constructed from A500 Grade B steel. Welding follows industry standards best practices. Arms are galvanized after fabrication.

Must specify finish. Optional polyester powder and red primer paint finishes available.

### INSTALLATION

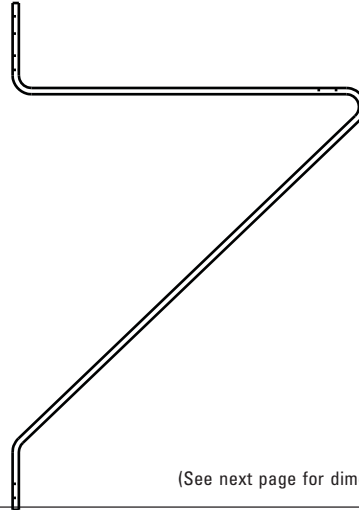
5/8" x 1-1/2" bolt, lock washer and nut included for fixture installation.

Installer to provide mounting hardware to mount to wall based on wall type.

### Angle Bracket Mounting Arms

# FSAB

STEEL (FSAB) ANGLE BRACKET



(See next page for dimensions and drawings.)

## ORDERING INFORMATION

Lead times will vary depending on options selected. Consult with your sales representative.

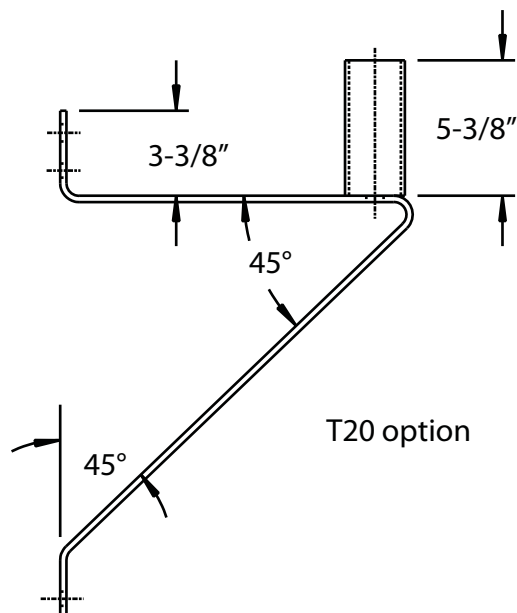
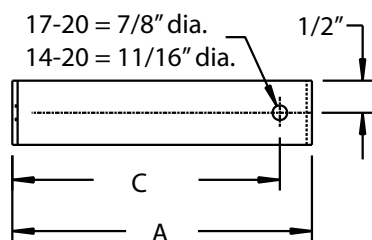
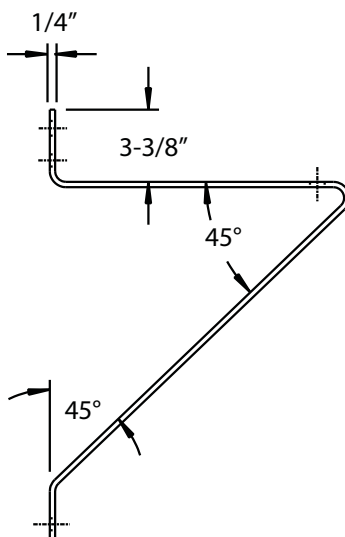
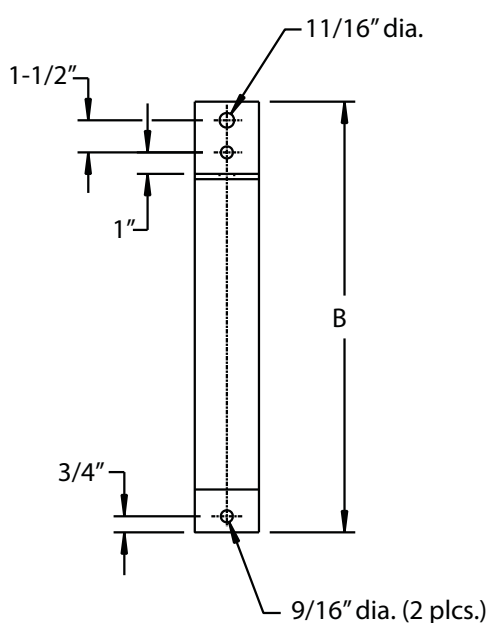
Example: FSAB 17-20 GALV

FSAB		Bracket length/rise		Tenon option		Finish <sup>1</sup>	
Series		(blank)		(blank)		Standard colors	
FSAB		14"	20"	No tenon		DDB	Dark bronze
		17-20	17" X 20"	T20	2-3/8" O.D. (2" NPS)	DWH	White
						DBL	Black
						DNA	Natural aluminum
						GALV	Galvanized steel
						<u>Primer finish</u>	
						DPRM	Red primer
						<u>Architectural colors (powder finish)<sup>1</sup></u>	

### NOTES:

- <sup>1</sup> Finish must be specified. Additional colors available; see [www.lithonia.com/archcolors](http://www.lithonia.com/archcolors) or the Architectural Colors brochure (Form No. 794.3).

# FSAB Angle Bracket, Building Mount



FSAB (Angle Bracket)								
Lithonia Lighting Catalog Number	Nominal arm length (ft.)	Dimensions (in.)			Bracket weight (lbs.)	Max. fixture EPA ft <sup>2</sup> @ 80 mph w/1.3 gusts	Max. fixture weight (lbs.)	ANSI C136.3 (1995) class rating @ 80 mph
		A	B	C				
FSAB	1-1/6	14	20	12-1/2	9	2.4	80	-
FSAB T20	1-1/6	14	20	5-1/3	10	2.4	80	-
FSAB 17-20	1-1/2	17	20	14-1/3	10	2.4	80	-
FSAB 17-20 T20	1-1/2	17	20	5-1/3	11	2.4	80	-

### IMPORTANT:

- These specifications are intended for general purposes only. Lithonia Lighting reserves the right to change material or design, without prior notice, in a continuing effort to upgrade its products.

### CAUTION:

- The arms described herein are designed for applications in areas of normal winds. Consult the factory prior to the design of systems to be mounted on structures such as bridges or buildings, or areas known to have abnormal winds such as airports or coastal areas. Failure to consider these factors in the system design could result in the failure of the pole or mast arm, and consequently personal injury or property damage.